

Photometric detection of internal gravity waves in upper main-sequence stars

II. Combined TESS photometry and high-resolution spectroscopy

D. M. Bowman¹, S. Bursens¹, S. Simón-Díaz^{2,3}, P. V. F. Edelmann⁴, T. M. Rogers^{5,6}, L. Horst⁷, F. K. Röpke^{7,8}, and C. Aerts^{1,9,10}

¹ Institute of Astronomy, KU Leuven, Celestijnenlaan 200D, B-3001 Leuven, Belgium
e-mail: dominic.bowman@kuleuven.be

² Instituto de Astrofísica de Canarias, E-38200 La Laguna, Tenerife, Spain

³ Departamento de Astrofísica, Universidad de La Laguna, E-38205 La Laguna, Tenerife, Spain

⁴ X Computational Physics (XCP) Division and Center for Theoretical Astrophysics (CTA), Los Alamos National Laboratory, Los Alamos, NM 87545, USA

⁵ School of Mathematics, Statistics and Physics, Newcastle University, Newcastle-upon-Tyne NE1 7RU, UK

⁶ Planetary Science Institute, Tucson, AZ 85721, USA

⁷ Heidelberger Institut für Theoretische Studien, Schloss-Wolfsbrunnenweg 36, 69118 Heidelberg, Germany

⁸ Zentrum für Astronomie der Universität Heidelberg, Institut für theoretische Astrophysik, Philosophenweg 12, 69120 Heidelberg, Germany

⁹ Department of Astrophysics, IMAPP, Radboud University Nijmegen, NL-6500 GL Nijmegen, The Netherlands

¹⁰ Max Planck Institute for Astronomy, Koenigstuhl 17, D-69117 Heidelberg, Germany

Received Day Month Year; accepted Day Month Year

ABSTRACT

Context. Massive stars are predicted to excite internal gravity waves (IGWs) by turbulent core convection and from turbulent pressure fluctuations in their near-surface layers. These IGWs are extremely efficient at transporting angular momentum and chemical species within stellar interiors, but remain largely unconstrained observationally.

Aims. We aim to characterise the photometric detection of IGWs across a large number of O and early-B stars in the Hertzsprung–Russell diagram, and explain the near-ubiquitous detection of stochastic variability in the photospheres of massive stars.

Methods. We combine high-precision time-series photometry from the NASA *Transiting Exoplanet Survey Satellite* with high-resolution ground-based spectroscopy of 70 stars with spectral types O and B to probe the relationship between the photometric signatures of IGWs and parameters such as spectroscopic mass, luminosity and macroturbulence.

Results. A relationship is found between the location of a star in the spectroscopic Hertzsprung–Russell diagram and the amplitudes and frequencies of stochastic photometric variability in the light curves of massive stars. Furthermore, the properties of the stochastic variability are statistically correlated with macroturbulent velocity broadening in the spectral lines of massive stars.

Conclusions. The common ensemble morphology for the stochastic low-frequency variability detected in space photometry and its relationship to macroturbulent broadening is strong evidence for IGWs in massive stars, as such waves are unique in providing the required dominant tangential velocities as a broadening mechanism in spectroscopy.

Key words. asteroseismology – stars: early-type – stars: oscillations – stars: evolution – stars: rotation – stars: fundamental parameters – stars: massive

1. Introduction

The advent of time-series photometry from space telescopes in the past decade has revealed a wealth of information for stars born with a convective core that was not previously attainable by ground-based telescopes. In particular, asteroseismology – the study of stellar structure and evolution by means of forward modelling stellar pulsation frequencies – has greatly benefitted from the long-term, high-precision and continuous light curves assembled by space missions such as CoRoT (Auvergne et al. 2009), Kepler/K2 (Borucki et al. 2010; Koch et al. 2010; Howell et al. 2014) and more recently the *Transiting Exoplanet Survey Satellite* (TESS; Ricker et al. 2015) mission. This is because various phenomena exist in massive stars that produce variability with periods between minutes and decades, which in turn makes

asteroseismology of pulsation mode frequencies in massive stars challenging when using ground-based telescopes (Aerts et al. 2010). However, space telescopes have opened the door for massive star asteroseismology by revealing a diverse range of different variability mechanisms across a wide range of masses, evolutionary stages and metallicity environments (Buysschaert et al. 2015; Bowman et al. 2019b; Pedersen et al. 2019; Bursens et al. 2020).

Despite the challenges in obtaining the necessary data suitable for asteroseismology, early studies of massive stars revealed that stellar structure and evolution theory is discrepant with observations in terms of angular momentum transport (Aerts et al. 2019a) and chemical mixing (Aerts 2020). In particular, the convective core masses of massive main-sequence stars

inferred through asteroseismic modelling are larger than predicted by current theoretical models (Handler et al. 2006; Briquet et al. 2007, 2011; Daszyńska-Daszkiewicz et al. 2013; Aerts et al. 2019b). Similarly, asteroseismology of main-sequence intermediate-mass stars also demonstrates the need for larger core masses than predicted by evolutionary models (Moravveji et al. 2015, 2016; Schmid & Aerts 2016; Buysschaert et al. 2018; Szewczuk & Daszyńska-Daszkiewicz 2018; Mombarg et al. 2019). This core-mass discrepancy for massive stars is also evident in the detailed analysis of eclipsing double-lined spectroscopic binary (SB2) systems, in which a larger amount of extra mixing in the near-core region is needed to explain the location of binary systems in the Hertzsprung–Russell (HR) diagram (Guinan et al. 2000; Claret & Torres 2016, 2019; Johnston et al. 2019; Tkachenko et al. 2020).

The evolution of a star born with a convective core involves the complex interaction of different physical processes, which are largely unconstrained in stellar models and currently controlled by free parameters, such as the amount and shape of near-core mixing. The large uncertainties from these unknowns are compounded by uncertainties associated with interacting multiple systems (Sana et al. 2012; Langer 2012), rotation (Ekström et al. 2012; Chieffi & Limongi 2013), metallicity (Georgy et al. 2013; Groh et al. 2019) and magnetic fields (Keszthelyi et al. 2019, 2020). Together these phenomena impact how a massive star is formed, how it evolves, and ultimately determine its fate beyond the main sequence. Yet the interior rotation, mixing and angular momentum transport mechanism for main sequence massive stars remain largely unconstrained (Aerts et al. 2019a).

There are several non-mutually exclusive variability mechanisms operating in massive stars. For early-type stars, stochastic low-frequency variability at the surface is commonly observed in photometry (see e.g. Balona 1992; Buysschaert et al. 2015; Bowman et al. 2019b). On the other hand, spectroscopic variability in the form of spectral line profile variations and variable *macroturbulence*¹ are also typical for massive stars (see e.g. Simón-Díaz & Herrero 2014). In their detailed study of how macroturbulence is related to stellar parameters, Simón-Díaz et al. (2017) make two important conclusions: (i) between early- and late-B main sequence stars, there is diverse behaviour in terms of line-broadening mechanisms, which is likely attributed to the diverse pulsational behaviour in this mass range, and (ii) main sequence O stars and B supergiants have macroturbulence as their dominant broadening mechanism, with most stars sharing a common broadening profile. Previously, macroturbulence has been linked to non-radial pulsations, which are excited by either the opacity mechanism and/or turbulent pressure fluctuations in stellar envelopes (Aerts et al. 2009; Grassitelli et al. 2015).

The commonly known form of pulsations in massive stars are coherent pulsation modes (i.e. standing waves) triggered by an opacity mechanism operating in the Z-bump associated with iron-peak elements (Dziembowski & Pamyatnykh 1993; Dziembowski et al. 1993; Miglio et al. 2007; Szewczuk & Daszyńska-Daszkiewicz 2017; Godart et al. 2017). Such a heat-engine is able to excite low-radial order pressure (p) modes in stars more massive than approximately $8 M_{\odot}$ and high-radial order gravity (g) modes in stars more massive than approximately $3 M_{\odot}$. See Szewczuk & Daszyńska-Daszkiewicz (2017) for calculations of instability regions of p- and g-mode pulsations in early-type stars including rotation. However, new observations reveal a signifi-

cant fraction of pulsating massive stars outside of predicted instability regions (Bursens et al. 2020), hence the overall picture of variability is far from complete.

Additionally, quasi-periodic variability caused by surface and/or wind inhomogeneities combined with rotation (Moffat et al. 2008; David-Uraz et al. 2017; Aerts et al. 2018; Simón-Díaz et al. 2018; Krtićka & Feldmeier 2018), and small-scale variability triggered by thin subsurface convection zones associated with local opacity enhancements (Cantiello et al. 2009; Cantiello & Braithwaite 2011, 2019; Lecoanet & Quataert 2013) can play a role in some massive stars. Subsurface convection is predicted to be more efficient towards later evolutionary phases, hence microturbulence is predicted to increase with increasing luminosity and decreasing surface gravity, the latter of which having been confirmed by observations (Cantiello et al. 2009; Tkachenko et al. 2020). Despite subsurface convection being absent in main-sequence B stars within the mass range $3 \leq M \leq 7 M_{\odot}$ (Cantiello et al. 2009; Cantiello & Braithwaite 2019), stochastic variability has been detected in Slowly Pulsating B (SPB) stars observed by the CoRoT and Kepler space missions (Bowman et al. 2019a; Pedersen 2020).

Moreover, subsurface convection zones and stellar winds do not provide the large-scale tangential velocity fields needed to explain macroturbulent broadening in massive stars (Gray 2005; Simón-Díaz et al. 2010; Simón-Díaz & Herrero 2014; Simón-Díaz et al. 2017). A combined radial-tangential broadening profile is typically adopted to reproduce observed spectroscopic line profiles (see e.g. Simón-Díaz & Herrero 2014). Such a profile from combining rotational and *pulsational* broadening components is motivated by the fact that non-radial gravity-mode pulsations produce predominantly horizontal velocities in the line-forming region. Rotational and microturbulent broadening alone cannot accurately reproduce (the variability of) spectral lines in hot stars (Gray 2005; Aerts et al. 2009).

Recent 2- and 3-D hydrodynamical simulations demonstrate that internal gravity waves (IGWs) generated at the interface of the convective core and radiative envelope are also expected for massive stars (Rogers et al. 2013; Edelmann et al. 2019; Horst et al. 2020). These IGWs are efficient at transporting angular momentum and chemical species within stellar interiors (Rogers 2015; Rogers & McElwaine 2017; Edelmann et al. 2019). The collective power of an entire spectrum of IGWs is predicted to produce stochastic low-frequency variability and a large tangential velocity field near the stellar surface (Rogers et al. 2013; Edelmann et al. 2019; Horst et al. 2020). Hence an ensemble of IGWs provides the required velocity field to explain macroturbulent velocity broadening in hot stars (Aerts & Rogers 2015). Furthermore, stochastic low-frequency variability was recently detected in hundreds of massive stars between 3 and $50 M_{\odot}$ by Bowman et al. (2019b) and inferred to be caused by IGWs because of its similar morphology to that predicted by hydrodynamical simulations.

Here we combine high-precision TESS photometry and high-resolution ground-based spectroscopy to probe the relationship between a star’s variability, location in the HR diagram and its measured macroturbulent broadening. In Section 2 we discuss our sample selection criteria and methodology. In Section 3, we test how the morphology of stochastic low-frequency variability depends on the parameters of a star. Finally, we discuss our results in Section 4, and conclude in Section 5.

¹ Conversely, microturbulence has a length scale much shorter than the mean free path of a photon, and is not to be confused with macroturbulence. See Gray (2005) for a detailed discussion.

2. Method

We extend the methodology developed by Bowman et al. (2019a) of analysing time-series photometry to a much larger sample of 70 massive stars observed by the TESS mission, and couple this to the spectroscopy. We compile a sample of early-type stars with spectral types O and B which have high-precision TESS photometry and fundamental parameters available from high-resolution spectroscopy (Burssens et al. 2020).

2.1. Sample selection criteria

As demonstrated by Blomme et al. (2011) and Bowman et al. (2019a), the variability in massive stars spans a broad range in frequency, and is significantly above the instrumental white noise level at frequencies as high as 100 d^{-1} for some stars. Therefore the TESS 2-min cadence is essential to avoid amplitude suppression of high-frequency variability² introduced by long-cadence time series photometry (Murphy 2014; Bowman 2017). We exclude stars for which the 2-min TESS light curves exhibit strong signatures of contamination or instrumental systematics as identified by Burssens et al. (2020). We also exclude eclipsing binary (EB) systems as these may contain a significant ($\geq 1\%$) light contribution from a secondary component, causing the photometric variability detected in the primary to be modulated by the light ratio during the binary phase, and this limits scientific inference.

The spectroscopic parameters of our sample are provided by Burssens et al. (2020) and include the effective temperature, T_{eff} , spectroscopic luminosity, $\log_{10}(\mathcal{L}/\mathcal{L}_{\odot})$, projected surface rotational velocity, $v \sin i$, and macroturbulent broadening, v_{macro} . These were derived from high-resolution spectra assembled by the IACOB (Simón-Díaz et al. 2011, 2015) and OWN (Barbá et al. 2010, 2014, 2017) surveys. Within the IACOB spectroscopic database, spectra of northern OB stars have been obtained with the HERMES spectrograph on the 1.2-m Mercator telescope (Raskin et al. 2011), and the FIES spectrograph mounted on the 2.6-m NOT telescope (Telting et al. 2014), on La Palma. Whereas spectra of southern O stars assembled as part of the OWN survey were obtained with the FEROS spectrograph mounted on the ESO/MPG 2.2-m telescope at La Silla (Kaufer et al. 1997). The extraction of spectroscopic parameters followed the methodologies outlined by Simón-Díaz & Herrero (2014); Holgado et al. (2018); Castro et al. (2018), and we refer the reader to Burssens et al. (2020) for further details.

Our final sample consists of 70 early-type stars in the Southern ecliptic hemisphere (TESS sectors 1–13). The spectral types and fundamental parameters determined from spectroscopy obtained from Burssens et al. (2020) are provided in Table A.1.

2.2. Iterative pre-whitening of coherent pulsation modes

We obtain the 2-min TESS light curves from the Mikulski Archive for Space Telescopes (MAST³). We use the pre-search data conditioning simple aperture photometry (PDCSAP) time series, and refer the reader to Jenkins et al. (2016) for further details of the TESS data pipeline. We perform checks to validate the chosen aperture mask and contamination, convert the

light curves into units of stellar magnitudes and perform additional detrending in the form of a low-order polynomial for each sector. From high-precision 2-min TESS light curves, we calculate amplitude spectra by means of a discrete Fourier transform (DFT; Deeming 1975; Kurtz 1985).

In addition to requiring high-cadence time-series photometry, it is also necessary to remove high-amplitude pulsation modes to detect and characterise the underlying stochastic low-frequency variability in early-type stars (Degroote et al. 2009, 2012; Bowman et al. 2019a). Importantly, we do not discriminate on the mechanism by which these coherent pulsation modes are excited: the opacity mechanism (Szewczuk & Daszyńska-Daszkiewicz 2017) and/or by core convection (Edelmann et al. 2019; Horst et al. 2020). It is known that the excitation of pulsation modes driven by the opacity mechanism is very sensitive to the rotation and metallicity of a star, and the opacity of stellar models (Miglio et al. 2007; Szewczuk & Daszyńska-Daszkiewicz 2017; Burssens et al. 2020). On the other hand, core convection is predicted to excite a broad spectrum of IGWs, including resonant pressure and gravity eigenmodes (Edelmann et al. 2019; Lecoanet et al. 2019; Horst et al. 2020).

We use the standard approach in asteroseismology of early-type stars with coherent pulsations and perform iterative pre-whitening to identify significant frequencies in the light curves and remove them to produce a *residual* amplitude spectrum (see e.g. Degroote et al. 2009; Pápics et al. 2012; Van Reeth et al. 2015; Bowman 2017). In this iterative process, all high-amplitude coherent pulsation modes are subtracted from the observed light curve using the cosinusoidal model:

$$\Delta m = A \cos(2\pi\nu(t - t_0) + \phi), \quad (1)$$

where A is the amplitude, ν is the frequency, ϕ is the phase, t is the time with respect to a zero-point t_0 . Following Bowman et al. (2019a,b), we employ the standard amplitude significance criterion in iterative pre-whitening, which defines significant frequencies having an amplitude signal-to-noise ratio (S/N) larger than four (Breger et al. 1993). Note that not all stars have significant frequencies following this definition (see Blomme et al. 2011; Bowman et al. 2019a).

2.3. Amplitude spectrum fitting

After iteratively prewhitening any significant pulsation mode frequencies and/or frequencies that may represent harmonics of the rotation frequency of each star, we use the method developed by Bowman et al. (2019a) and Bowman et al. (2019b) to characterise the stochastic low-frequency variability in its residual amplitude spectrum. We utilise a Bayesian Markov chain Monte Carlo (MCMC) framework with the Python code *emcee* (Foreman-Mackey et al. 2013) to fit the residual amplitude spectrum of a star with the function:

$$\alpha(\nu) = \frac{\alpha_0}{1 + \left(\frac{\nu}{\nu_{\text{char}}}\right)^{\gamma}} + C_w, \quad (2)$$

where α_0 represents the amplitude at a frequency of zero, γ is the logarithmic amplitude gradient, ν_{char} is the characteristic frequency (i.e. the inverse of the characteristic timescale, τ , of stochastic variability present in the light curve such that $\nu_{\text{char}} = (2\pi\tau)^{-1}$), and C_w is a frequency-independent (i.e. white) noise term (Blomme et al. 2011; Bowman et al. 2019b).

² TESS full frame image (FFI) data have a cadence of 30 min which causes significant amplitude suppression near integer multiples of the FFI sampling frequency, hence prevents an accurate determination of the high-frequency component of IGWs above $\nu \gtrsim 10 \text{ d}^{-1}$.

³ MAST website: <https://archive.stsci.edu/>

Similarly to Bowman et al. (2019b), we use non-informative (flat) priors and 128 parameter chains, and we fit the (residual) amplitude spectrum up to the TESS Nyquist frequency (i.e. $0.1 \leq \nu \leq 360.0 \text{ d}^{-1}$) using the model given in Eq. (2) for each star in our sample. At each iteration, a parameter chain is used to construct a model that is subject to a log-likelihood evaluation:

$$\ln \mathcal{L} \propto -\frac{1}{2} \sum_i \left(\frac{y_i - M(\Theta_i)}{\sigma_i} \right)^2, \quad (3)$$

where $\ln \mathcal{L}$ is the log-likelihood, y_i are the data, σ_i are their uncertainties and M_Θ is the model with parameters Θ . After burning the first few hundred iterations, convergence is confirmed for the subsequent ~ 1000 iterations using the parameter variance criterion from Gelman & Rubin (1992).

The residual amplitude spectrum fit using Eq. (2) provides the amplitude and dominant timescale(s) of the stochastic variability in the light curve of each massive star. Furthermore, the *steepness* of the frequency spectrum, γ , and at what frequency the profile turns over, ν_{char} , are important parameters to distinguish the source of the stochastic variability (Bowman et al. 2019a). Hydrodynamical simulations predict that an ensemble of IGWs generated by core convection produces an amplitude spectrum with $0.8 \leq \gamma \leq 3$ and variability up to 100 d^{-1} . Furthermore, the exact values of γ and ν_{char} depend on the mass and radius of the host star (Rogers et al. 2013; Edelmann et al. 2019; Horst et al. 2020). On the other hand, other sources of low-frequency variability such as subsurface convection produce a much steeper frequency spectrum ($\gamma \geq 3.25$; Coustou et al. 2018; Lecoanet et al. 2019), which is only dominant below (extremely) small frequencies, i.e. $\nu \approx 0.2 \text{ d}^{-1}$ (see figure 2 from Lecoanet et al. 2019).

At very low frequencies, such as below 0.1 d^{-1} , the probing power of time series photometry is limited by the length of observations. Furthermore, instrumental systematics present in the light curve may dominate in the amplitude spectrum below 0.1 d^{-1} since they correspond to variability with periods of order the length of the time series. In the case of TESS data, this corresponds to approximately 12 d (i.e. half of a single sector), which is why Bowman et al. (2019b) only characterised variability above 0.1 d^{-1} . In *all* massive stars studied by Bowman et al. (2019b) and those in our current TESS sample, the measured ν_{char} parameter is significant at frequencies higher than 0.2 d^{-1} .

3. Results

The amplitude spectrum of each massive star in our sample was fit using Eq. (2). For all 70 stars in our sample, we provide the resultant fit parameters in Table A.2 and their 1σ statistical uncertainties as determined from the converged parameter chains from our MCMC framework (Bowman et al. 2019a). The fitted logarithmic amplitude spectra for all stars are provided as figures in Appendix B, so as to demonstrate the broad range of frequencies and amplitudes within our sample of massive stars.

We provide three examples of massive stars with fitted stochastic low-frequency variability in Fig. 1 that were previously observed by CoRoT. These stars demonstrate that the broad frequency excess occurs in both the TESS data of massive stars but also in the completely independent CoRoT observations from approximately a decade ago. In Fig. 1, orange lines denote the original TESS amplitude spectra (before iterative pre-whitening) and black lines denote residual amplitude

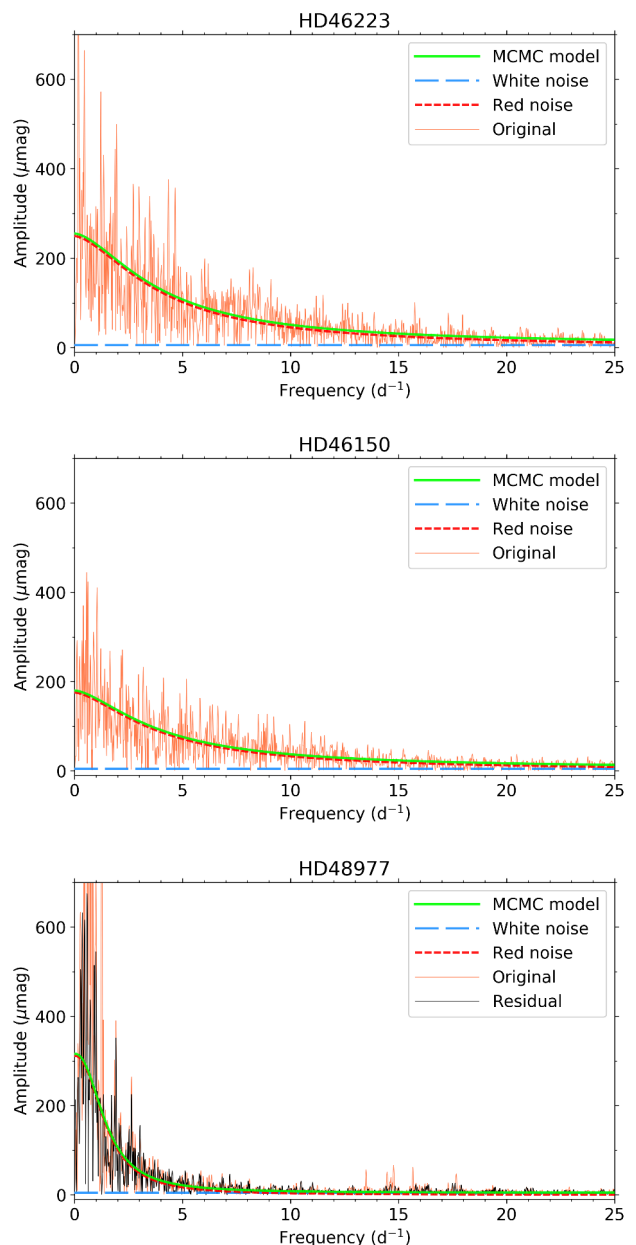


Fig. 1. Fitted amplitude spectra calculated using TESS light curves for the O4 V((f)) star HD 46223 (top panel), the O5 V((f)) star HD 46150 (middle panel), the B2.5 V star HD 48977 (bottom panel), which were previously also observed by CoRoT and concluded to exhibit IGWs (Bowman et al. 2019a). Note that in these three specific examples, HD 48977 underwent iterative pre-whitening to produce a residual amplitude spectrum because it exhibits significant p-mode frequencies above 10 d^{-1} .

spectra after iterative pre-whitening has removed $S/N \geq 4$ frequencies. In Fig. 1, the solid green, short-dashed red and long-dashed blue lines denote the best-fitting model (cf. Eq. (2)) and its red- and white-noise components, respectively. Therefore, TESS observations of massive stars confirm the same stochastic broad-frequency excess as was observed by CoRoT (Blomme et al. 2011; Bowman et al. 2019a).

It is clear from Fig. 1 that more massive O dwarf stars (e.g. HD 46223 and HD46150; Blomme et al. 2011) have a broader frequency excess that is significant above the white noise level and reaches much higher frequencies compared to B dwarf stars

(e.g. HD 48977; Thoul et al. 2013). The stochastic variability of the O dwarfs is significant over the 1-sector TESS white noise level of order a few μmag at frequencies higher than $\sim 30 \text{ d}^{-1}$ ($\sim 350 \mu\text{Hz}$). Whereas in the B dwarfs, the stochastic low-frequency variability in the residual amplitude spectrum after coherent pulsation modes have been removed is significant up to $\sim 10 \text{ d}^{-1}$ ($\sim 120 \mu\text{Hz}$).

3.1. Asteroseismic HR diagrams

To more accurately investigate the observed photometric variability, we place our stars in the spectroscopic HR (sHR) diagram in Fig. 2. This common approach when studying massive stars involves using the effective stellar luminosity on the ordinate axis defined as: $\mathcal{L} := T_{\text{eff}}^4/g$ (Langer & Kudritzki 2014). This has the significant advantage of avoiding issues pertaining to uncertain distances and reddening propagating into bolometric luminosity calculations. Each star is represented by a circle in the spectroscopic HR diagrams in the bottom-left and -right panels of Fig. 2, which have been colour-coded by the fit parameters α_0 and ν_{char} , respectively, and have a symbol size that is proportional to the fit parameter α_0 . To illustrate the distribution of our sample in terms of spectroscopic mass and evolutionary stage, we plot the non-rotating evolutionary tracks for initial masses between 4 and $80 M_{\odot}$ calculated by Burssens et al. (2020) as grey lines in Fig. 2, and a indicative ZAMS line as the dashed-grey line.

In the top row of Fig. 2, we also plot the pairwise relationship between the individual fit parameters α_0 , ν_{char} and γ as filled circles, which have been colour-coded by the spectroscopic luminosity of each star. For the most massive stars within our sample ($M > 20 M_{\odot}$), it is clear that the more luminous stars have larger α_0 values – i.e. larger amplitudes in their stochastic photometric variability. Furthermore, as best evidenced by the spectroscopic HR diagrams in the bottom row of Fig. 2, more massive and more evolved stars not only have larger amplitudes in their stochastic photometric variability, but smaller ν_{char} values – i.e. the dominant photometric variability is constrained to longer periods. This is a characteristic signature of IGWs probing stellar evolution: more evolved stars have larger radii, hence IGWs have longer periods.

Inferring relationships among fit parameters and the distribution in the HR diagram for stars with masses between approximately $5 \lesssim M \lesssim 20 M_{\odot}$ is less clear. This is expected because the stars in this mass regime have diverse causes for their variability, such as rotational modulation and coherent pulsation modes excited by the opacity mechanism (β Cephei and Slowly Pulsating B stars; Aerts et al. 2010) superimposed on their stochastic low-frequency variability. In the case of short-length time series and a large number of independent pulsation modes, this makes the extraction of the morphology of the stochastic low-frequency variability subject to somewhat larger uncertainties (Bowman et al. 2019a). Such a photometric result is supported by the diverse range in spectroscopic variability and broadening mechanisms found in main-sequence B stars (see e.g. Simón-Díaz et al. 2017).

In their study of the initial detection of stochastic variability in three O stars observed by CoRoT, which included the O dwarfs HD 46223 and HD 46150 in this work, Blomme et al. (2011) discussed an apparent dichotomy in the photometric variability of massive stars. More specifically, early-O stars typically have stochastic low-frequency variability, and late-O and early-B stars typically have coherent pulsation modes. The transition between these takes place at spectral type of around O8, as also

illustrated by the star HD 46149 by Degroote et al. (2010). This spectral type approximately corresponds to a mass of approximately $20 M_{\odot}$. A similar dichotomy of stars later than O8 having variability caused by coherent pulsation modes has also found in spectroscopic variability studies of early-type stars (e.g. Simón-Díaz et al. 2017).

Our much larger sample of massive stars compared to the previous studies by Blomme et al. (2011) and Bowman et al. (2019a), clearly supports the importance of stochastic photometric variability in massive stars. Furthermore, our results are the first evidence that such photometric variability is increasingly important for more massive stars, and is related to the mass and evolutionary stage of the star, as evidenced by Fig. 2. The parameter space in the spectroscopic HR diagram occupied by the O stars is also where macroturbulence is the dominant broadening mechanism (Simón-Díaz et al. 2017). We explore the connection between macroturbulence and stochastic photometric variability in Section 3.2.

3.2. Waves and macroturbulence

In addition to the location in the spectroscopic HR diagram, we are able to probe the relationship between stochastic photometric variability measured in TESS photometry and macroturbulence measured in spectroscopy for a large number of massive stars. Among main-sequence B stars, it has been noted by several studies that non-radial g-mode pulsations are a plausible physical mechanism to explain macroturbulence given their dominant horizontal velocities (Aerts et al. 2009; Aerts & Rogers 2015; Simón-Díaz et al. 2010; Simón-Díaz & Herrero 2014; Simón-Díaz et al. 2017). Using spectroscopic observations and detailed simulations of broadening and variability in spectral line profiles of main-sequence B stars, Aerts et al. (2009) demonstrated that macroturbulence is well explained by non-radial coherent g-mode pulsations. Aerts & Rogers (2015) extended this study to demonstrate that the collective power of an ensemble of IGWs is also a plausible mechanism for macroturbulent broadening. Gravity waves (coherent and damped) have a ratio in their horizontal to vertical velocities that ranges approximately between 10 and 100 in observations (De Cat & Aerts 2002; Aerts & De Cat 2003), with similar values predicted by hydrodynamical simulations (Rogers et al. 2013; Aerts & Rogers 2015; Horst et al. 2020).

Given the scarce number of stars more massive than some $20 M_{\odot}$ with coherent g-mode pulsations, Grassitelli et al. (2015) demonstrated how turbulent pressure fluctuations correlate with macroturbulence in massive O stars. Therefore, IGWs excited by turbulent pressure in the envelopes of massive O stars has also been inferred to be a plausible mechanism to explain macroturbulence (Grassitelli et al. 2015). Other mechanisms, such as sub-surface convection, however, are associated with causing micro-turbulence in massive stars as they cannot reproduce the required horizontal velocity field in the line-forming region (Cantiello et al. 2009).

In Fig. 3 we test the correlation of stochastic photometric variability and macroturbulent broadening measured using high-resolution spectroscopy using the 59 out of 70 stars in our sample with reliable estimates of macroturbulence. We find a clear correlation between the amplitude of the stochastic photometric variability (α_0) and ν_{macro} within our sample. A linear regression reveals a strong correlation ($R = 0.60$; $p < 0.01$) between the photometric amplitudes of stochastic variability in TESS photometry and spectroscopically measured macroturbulence. We provide the Spearman's rank correlation coefficient, R , and the

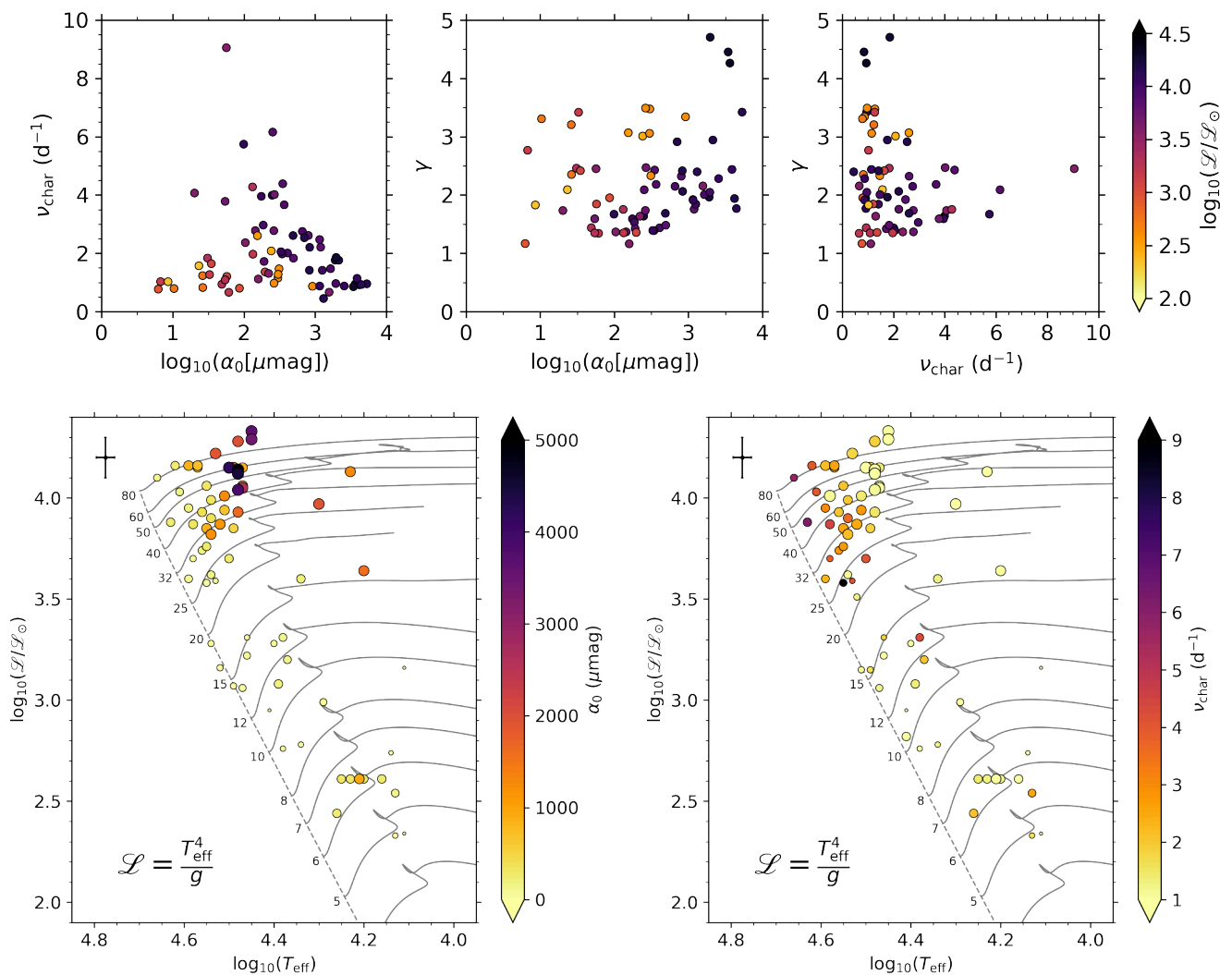


Fig. 2. *Top row:* pairwise relationship between α_0 , ν_{char} and γ (cf. Eq. 2) best-fit parameters for our sample of OB stars. *Bottom row:* location of stars in the spectroscopic HR diagram as filled circles that are colour-coded by the best-fit parameters α_0 (left) and ν_{char} (right), and have a symbol size proportional to the fit parameter α_0 . Evolutionary tracks (in units of M_{\odot}) from Burssens et al. (2020) are shown as solid grey lines and the dashed grey line represents the ZAMS. A typical spectroscopic error bar for our sample is shown in the top-left corner.

corresponding p -value (obtained from a t -test) in Fig. 3. Our statistical analysis also reveals a significant correlation ($R = 0.38$; $p < 0.01$) between the measured ν_{char} in the stochastic photometric variability and the spectroscopic macroturbulent broadening. This is expected for IGWs as they are sensitive to the mass and radius of a star. Finally, our results demonstrate that macroturbulence has no significant correlation ($R = -0.15$; $p = 0.24$) with the steepness of the observed frequency spectrum.

The observed relationship between ν_{macro} and the fit parameters of the stochastic photometric variability shown in Fig. 3 builds on the previous theoretical work by Aerts & Rogers (2015) and Grassitelli et al. (2015), and spectroscopy by Simón-Díaz et al. (2017). It demonstrates the importance of IGWs in massive stars. Furthermore, our study provides photometric evidence that IGWs are increasingly more important as the stars have larger spectroscopic masses and luminosities. Non-radial pulsations (coherent modes and/or travelling waves) are unique in their ability to explain the required tangential velocity fields near the stellar surface, given such strong correlations with macroturbulence measured spectroscopically.

4. Discussion

4.1. Ubiquitous stochastic variability in photometry

In this work, we provide quantitative results for measuring the stochastic low-frequency variability in photometry for the largest number of massive stars to date. As demonstrated by Fig. 1 (and the figures in appendix B), the frequency range of the measured variability is very broad. To demonstrate the common morphology in the observed stochastic photometric variability in our sample of 70 massive stars, we plot all the fitted profiles using Eq. (2) in Fig. 4, which are colour coded by each star's spectroscopic luminosity. Clearly a common morphology exists for all early-type stars, but as mentioned in Section 3.1, the relationship between the observed stochastic photometric variability and the spectroscopic parameters of a star is most evident for the most massive stars in our sample ($M \geq 20 M_{\odot}$). The variance within the morphologies for the main-sequence B stars is quite diverse as expected.

The important features in ascertaining the physical mechanism for the stochastic low-frequency variability in photometry

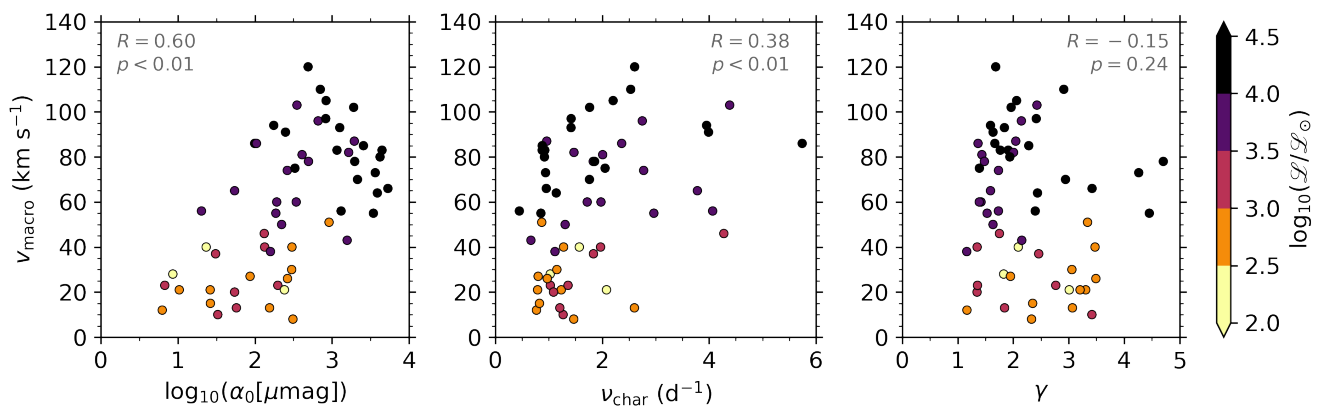


Fig. 3. Relationship between α_0 , ν_{char} and γ (cf. Eq. 2) and spectroscopically measured macro-turbulence (v_{macro}), colour-coded by spectroscopic luminosity. The Spearman’s rank correlation coefficient, R , and the corresponding p -value (obtained from a t -test) are also provided.

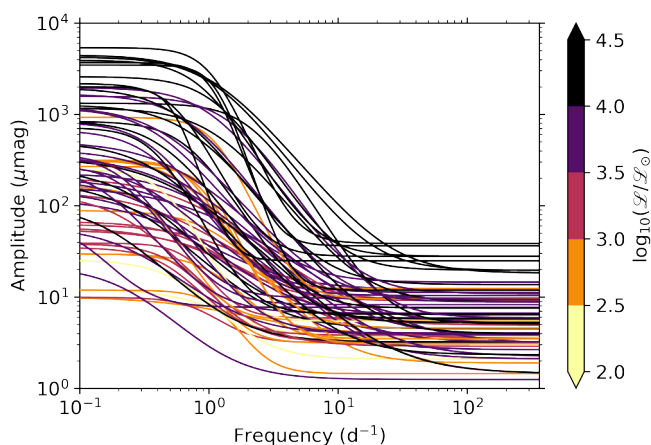


Fig. 4. Morphology of the stochastic low-frequency variability (cf. Eq. 2) determined from TESS light curves for our sample of OB stars, which are colour-coded by spectroscopic luminosity.

of massive stars are the steepness of the measured amplitude spectrum and the frequency range for the dominant variability (Bowman et al. 2019a,b). Such features are well characterised by the fit parameters γ and ν_{char} , respectively. The remaining fit parameters given in Eq. (2) are more dependent on the photometric data. To preserve the homogeneity of the TESS photometry, we do not combine it with light curves from different telescopes. For example, the amplitude of the stochastic variability at zero-frequency, α_0 , is a function of the wavelength range of the observations, since the light curves from which amplitude spectra are calculated are not bolometric but in fact wavelength dependent — i.e. dF_λ/F_λ and not dL/L . Also, the white noise amplitude, C_w , is dependent on the number, length and photometric precision of the data points in the light curve.

4.2. Comparison to previous photometric studies

Previous studies by Blomme et al. (2011); Aerts & Rogers (2015); Bowman et al. (2019a) were limited to a few O stars observed by the CoRoT mission. Similarly, Bowman et al. (2019b) studied the stochastic photometric variability in 167 OB stars observed by the K2 and TESS missions. However, parameters from high-resolution spectroscopy were not yet available, and the location of these stars in the colour-magnitude diagram using Gaia photometry (Gaia Collaboration et al. 2016, 2018) based

on distance (Bailer-Jones et al. 2018), reddening and extinction estimates (McCall 2004; Green et al. 2018), meant that masses and evolutionary stages could not be inferred for their sample. Nevertheless, the measured morphology of the stochastic low-frequency variability in this large sample of galactic and extra-galactic OB stars studied by Bowman et al. (2019b) yielded $\gamma \leq 3.5$ for the vast majority of stars. This is fully in agreement with our current study using TESS light curves.

Most importantly, the steepness of the amplitude spectrum, γ , was found to be insensitive to the metallicity of the star, since the sample of O and B stars studied by Bowman et al. (2019b) included 114 ecliptic stars (i.e. $Z \geq Z_\odot$) observed by the K2 mission and 53 metal-poor stars (i.e. $Z \approx 0.5 Z_\odot$) within the Large Magellanic Cloud (LMC) galaxy. The efficiency and properties of the predicted variability caused by (sub)surface convection are largely determined by the metallicity of a star (Cantiello et al. 2009), as is the efficiency of turbulent pressure in the envelopes of massive stars (Grassitelli et al. 2015). However, in the case of IGWs excited by core convection, only the radius and (convective core) mass of the star set the dominant frequency range ($\nu \lesssim \nu_{\text{char}}$) of the IGW amplitude spectrum with a common steepness (γ). Asteroseismology of coherent g-mode pulsations has recently allowed the convective core masses of 24 Slowly Pulsating B stars observed by the Kepler mission, which cover the mass range $[3, 9] M_\odot$, to be determined (Pedersen 2020). The simultaneous detection of IGWs in many of these main sequence B stars also allows the efficiency of driving waves by core convection to be tested, but this is beyond the scope of the current work.

Our TESS sample comprises a large number of OB stars with masses above $5 M_\odot$ across the southern ecliptic hemisphere observed by TESS, the measured values of the steepness (γ) and dominant frequency range ($\nu \lesssim \nu_{\text{char}}$) of low-frequency photometric variability are in full agreement with previous findings based on massive stars observed by the CoRoT and K2 space missions (Bowman et al. 2019a,b). Therefore, these results provide further observational evidence that stochastic variability in massive stars is caused by IGWs, either from turbulent core convection and/or from turbulent pressure fluctuations in their outer envelopes. No variability mechanism other than IGWs is able to explain the similar morphology that extends to relatively large frequencies, the similar γ values, and the large ν_{char} values for metal-poor and metal-rich stars, across such a wide range of masses and evolutionary stages of stars.

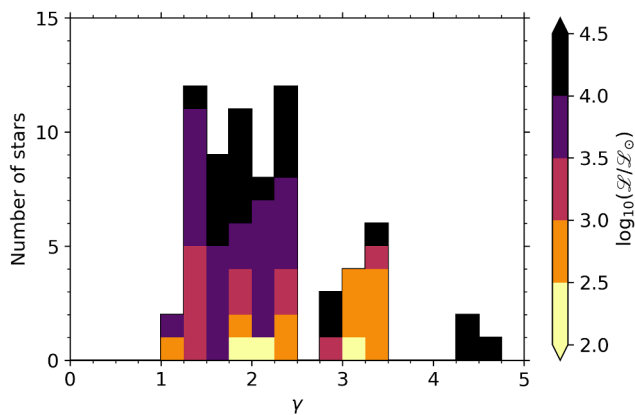


Fig. 5. Histogram of the steepness parameter γ (cf. Eq. 2) of the stochastic low-frequency variability for our sample of OB stars colour-coded by spectroscopic luminosity.

4.3. Comparison to 3D simulations

Recent 3D numerical simulations using a physical stellar structure model as the input reference state predict that core convection produces an IGW amplitude spectrum compatible with a frequency exponent of $0.8 \leq \gamma \leq 3$ (Edelmann et al. 2019). Conversely, numerical simulations using a Cartesian box geometry predict much steeper frequency spectra (Couston et al. 2018). The exact properties of the resultant IGW spectrum near the surface of a star depend on its mass, radius and interior rotation rate, which have yet to be fully explored using a parameter study based on hydrodynamical simulations. Nonetheless, the agreement between predicted γ values for IGWs excited by core convection from current 3D hydrodynamical simulations and observed γ values for our sample of OB stars is striking.

We plot the histogram of the measured γ values for our 70 stars in Fig. 5, which is colour-coded using each star’s spectroscopic luminosity similarly to Bowman et al. (2019a). Our analysis reveals that *all* massive stars observed by TESS have $\gamma < 5$ with the vast majority having $1 \leq \gamma \leq 3.5$. Furthermore, the observed stochastic variability is significant up to a relatively high frequency regime of tens of d^{-1} in many of the stars. Such a broad frequency range can be explained by an entire spectrum of IGWs, which includes a large range of spatial scales (Edelmann et al. 2019).

5. Conclusions

In this work we have assembled a sample of 70 massive stars that have spectroscopic parameters determined from high-resolution ground-based spectroscopy by the IACOB project (Simón-Díaz et al. 2017; Holgado et al. 2018, and references therein), and high-precision time-series photometry from the TESS mission (Burssens et al. 2020). We applied the methodology devised by Bowman et al. (2019a) and further developed by Bowman et al. (2019b) to our sample of stars to measure the morphological properties of their stochastic low-frequency variability. This first involved removing any significant frequencies associated with rotational modulation and/or coherent pulsation modes via iterative pre-whitening, and subsequently fitting the residual amplitude spectra using a Bayesian MCMC framework to determine the amplitude (α_0), dominant frequency range ($\nu \lesssim \nu_{\text{char}}$), steepness (γ) and white-noise term (C_w). Our sample of stars and their

determined fit parameters are provided in Tables A.1 and A.2, respectively.

We place our sample in the spectroscopic HR diagram using the accurate parameters from ground-based spectroscopy and demonstrate that the morphology of the amplitude spectrum of stochastic photometric variability is sensitive to the spectroscopic luminosity and evolutionary stage of a star, as shown in Fig. 2. We demonstrate that stochastic photometric variability is increasingly more important in more massive stars, and that the morphology of the variability directly probes the properties of a star. We also find a clear correlation among the amplitude and characteristic frequency of the stochastic photometric variability and the measured macroturbulent broadening in our sample of massive stars. Macroturbulence and spectral line profile variability have been previously associated with non-radial g-mode pulsations for main-sequence B stars (e.g. Aerts et al. 2009; Simón-Díaz et al. 2010; Aerts & Rogers 2015) and turbulent pressure fluctuations exciting IGWs for O stars (Grassitelli et al. 2015). Here we show that the photometric amplitudes of the stochastic variability strongly correlate with the spectroscopic macroturbulence, as shown in Fig. 3. Thus, we conclude that our observational study supports the predictions from theoretical and numerical work that IGWs, excited by core convection and/or turbulent pressure fluctuations, are indeed a plausible mechanism for macroturbulent broadening in massive stars (Aerts & Rogers 2015; Grassitelli et al. 2015; Simón-Díaz et al. 2017).

Moreover, we find that the measured fit parameters ν_{char} and γ agree with predictions of the amplitude spectrum of IGWs excited by core convection in hydrodynamical simulations (Rogers et al. 2013; Edelmann et al. 2019; Horst et al. 2020). The distribution in the steepness of the observed amplitude spectra, γ , is shown in Fig. 5. Clearly, the excitation, propagation and detectability of IGWs is an important issue for massive stars from theoretical, hydrodynamical and observational perspectives (Lecoanet & Quataert 2013; Shiode et al. 2013; Rogers et al. 2013; Aerts & Rogers 2015; Aerts et al. 2018, 2019b; Grassitelli et al. 2015; Augustson & Mathis 2019; Bowman et al. 2019a,b; Edelmann et al. 2019; Horst et al. 2020). Our results demonstrate a requirement to include the mixing and angular momentum transport caused by IGWs in the next generation of stellar structure and evolution models, especially for massive stars on the main sequence. In turn this may alleviate the large discrepancies between predicted interior rotation rates from current angular momentum transport theory and observations for stars born with a convective core (Aerts et al. 2019a).

Finally, our results are useful for guiding future asteroseismic studies of massive stars, such as the most massive O stars and blue supergiants (e.g. Saio et al. 2006; Kraus et al. 2015; Bowman et al. 2019b), which may not be pulsating in coherent p- and/or g-modes, but do exhibit photometric variability because of IGWs. In the future, we will expand our study to include all massive stars in the IACOB database, with long-term light curves assembled as part of the nominal and extended TESS mission. To more accurately explore the parameter space beyond the main sequence, we will also extend our methodology to include blue supergiants in both the Galaxy and the LMC, such that we can investigate the role of metallicity on the driving mechanism of IGWs in massive stars.

Acknowledgements. The authors thank the TESS science team for the excellent data. The TESS data presented in this paper were obtained from the Mikulski Archive for Space Telescopes (MAST) at the Space Telescope Science Institute (STScI), which is operated by the Association of Universities for Research in Astronomy, Inc., under NASA contract NAS5-26555. Support to MAST for these data is provided by the NASA Office of Space Science via grant NAG5-7584 and

by other grants and contracts. Funding for the TESS mission is provided by the NASA Explorer Program. This research has made use of the SIMBAD database, operated at CDS, Strasbourg, France; the SAO/NASA Astrophysics Data System; and the VizieR catalog access tool, CDS, Strasbourg, France. Some of the observations used in this work were obtained with the HERMES spectrograph, which is supported by the Fund for Scientific Research of Flanders (FWO), Belgium, the Research Council of KU Leuven, Belgium, the Fonds National Recherches Scientific (FNRS), Belgium, the Royal Observatory of Belgium, the Observatoire de Genève, Switzerland, and the Thüringer Landessternwarte Tautenburg, Germany. The research leading to these results has received funding from the European Research Council (ERC) under the European Union's Horizon 2020 research and innovation programme (grant agreement No. 670519: MAM-SIE). SS-D acknowledges support from the Spanish Government Ministerio de Ciencia e Innovación through grants PGC-2018-091 3741-B-C22 and SEV 2015-0548, and from the Canarian Agency for Research, Innovation and Information Society (ACIISI), of the Canary Islands Government, and the European Regional Development Fund (ERDF), under grant with reference ProID2017010115. The work of PVFE was supported by the US Department of Energy through the Los Alamos National Laboratory. Los Alamos National Laboratory is operated by Triad National Security, LLC, for the National Nuclear Security Administration of U.S. Department of Energy (Contract No. 89233218CNA000001). Support for this research was provided by STFC grant ST/S000542/1 and NASA grant NNX17AB92G. The work of LH and FKR is supported by the Klaus Tschira Foundation.

References

- Aerts, C. 2020, Reviews of Modern Physics, under review, arXiv e-prints, arXiv:1912.12300
- Aerts, C., Bowman, D. M., Simón-Díaz, S., et al. 2018, *MNRAS*, 476, 1234
- Aerts, C., Christensen-Dalsgaard, J., & Kurtz, D. W. 2010, *Asteroseismology* (Springer)
- Aerts, C. & De Cat, P. 2003, *Space Sci. Rev.*, 105, 453
- Aerts, C., Mathis, S., & Rogers, T. M. 2019a, *ARA&A*, 57, 35
- Aerts, C., Pedersen, M. G., Vermeyen, E., et al. 2019b, *A&A*, 624, A75
- Aerts, C., Puls, J., Godart, M., & Dupret, M.-A. 2009, *A&A*, 508, 409
- Aerts, C. & Rogers, T. M. 2015, *ApJ*, 806, L33
- Augustson, K. C. & Mathis, S. 2019, *ApJ*, 874, 83
- Auvergne, M., Bodin, P., Boisnard, L., et al. 2009, *A&A*, 506, 411
- Bailer-Jones, C. A. L., Rybizki, J., Fousneau, M., Mantelet, G., & Andrae, R. 2018, *AJ*, 156, 58
- Balona, L. A. 1992, *MNRAS*, 254, 403
- Barbá, R., Gamen, R., Arias, J. I., et al. 2014, in *Revista Mexicana de Astronomía y Astrofísica Conference Series*, Vol. 44, *Revista Mexicana de Astronomía y Astrofísica Conference Series*, 148–148
- Barbá, R. H., Gamen, R., Arias, J. I., et al. 2010, in *Revista Mexicana de Astronomía y Astrofísica Conference Series*, Vol. 38, *Revista Mexicana de Astronomía y Astrofísica Conference Series*, 30–32
- Barbá, R. H., Gamen, R., Arias, J. I., & Morrell, N. I. 2017, in *IAU Symposium*, Vol. 329, *The Lives and Death-Throes of Massive Stars*, ed. J. J. Eldridge, J. C. Bray, L. A. S. McClelland, & L. Xiao, 89–96
- Blomme, R., Mahy, L., Catala, C., et al. 2011, *A&A*, 533, A4
- Borucki, W. J., Koch, D., Basri, G., et al. 2010, *Science*, 327, 977
- Bowman, D. M. 2017, *Amplitude Modulation of Pulsation Modes in Delta Scuti Stars* (Springer International Publishing)
- Bowman, D. M., Aerts, C., Johnston, C., et al. 2019a, *A&A*, 621, A135
- Bowman, D. M., Burssens, S., Pedersen, M. G., et al. 2019b, *Nature Astronomy*, 3, 760
- Breger, M., Stich, J., Garrido, R., et al. 1993, *A&A*, 271, 482
- Briquet, M., Aerts, C., Baglin, A., et al. 2011, *A&A*, 527, A112
- Briquet, M., Morel, T., Thoul, A., et al. 2007, *MNRAS*, 381, 1482
- Burssens, S., Simón-Díaz, S., Bowman, D. M., et al. 2020, *A&A*, under review
- Buysschaert, B., Aerts, C., Bloemen, S., et al. 2015, *MNRAS*, 453, 89
- Buysschaert, B., Aerts, C., Bowman, D. M., et al. 2018, *A&A*, 616, A148
- Cantiello, M. & Braithwaite, J. 2011, *A&A*, 534, A140
- Cantiello, M. & Braithwaite, J. 2019, *ApJ*, 883, 106
- Cantiello, M., Langer, N., Brott, I., et al. 2009, *A&A*, 499, 279
- Castro, N., Oey, M. S., Fossati, L., & Langer, N. 2018, *ApJ*, 868, 57
- Chieffi, A. & Limongi, M. 2013, *ApJ*, 764, 21
- Claret, A. & Torres, G. 2016, *A&A*, 592, A15
- Claret, A. & Torres, G. 2019, *ApJ*, 876, 134
- Couston, L.-A., Lecoanet, D., Favier, B., & Le Bars, M. 2018, *Journal of Fluid Mechanics*, 854, R3
- Daszyńska-Daszkiewicz, J., Szewczuk, W., & Walczak, P. 2013, *MNRAS*, 431, 3396
- David-Uraz, A., Owocki, S. P., Wade, G. A., Sundqvist, J. O., & Kee, N. D. 2017, *MNRAS*, 470, 3672
- De Cat, P. & Aerts, C. 2002, *A&A*, 393, 965
- Deeming, T. J. 1975, *Ap&SS*, 36, 137
- Degroote, P., Aerts, C., Michel, E., et al. 2012, *A&A*, 542, A88
- Degroote, P., Briquet, M., Auvergne, M., et al. 2010, *A&A*, 519, A38
- Degroote, P., Briquet, M., Catala, C., et al. 2009, *A&A*, 506, 111
- Dziembowski, W. A., Moskalik, P., & Pamyatnykh, A. A. 1993, *MNRAS*, 265, 588
- Dziembowski, W. A. & Pamyatnykh, A. A. 1993, *MNRAS*, 262, 204
- Edelmann, P. V. F., Ratnasingham, R. P., Pedersen, M. G., et al. 2019, *ApJ*, 876, 4
- Ekström, S., Georgy, C., Eggenberger, P., et al. 2012, *A&A*, 537, A146
- Foreman-Mackey, D., Hogg, D. W., Lang, D., & Goodman, J. 2013, *PASP*, 125, 306
- Gaia Collaboration, Brown, A. G. A., Vallenari, A., et al. 2018, *A&A*, 616, A1
- Gaia Collaboration, Prusti, T., de Bruijne, J. H. J., et al. 2016, *A&A*, 595, A1
- Gelman, A. & Rubin, D. B. 1992, *Statistical Science*, 7, 457
- Georgy, C., Ekström, S., Eggenberger, P., et al. 2013, *A&A*, 558, A103
- Godart, M., Simón-Díaz, S., Herrero, A., et al. 2017, *A&A*, 597, A23
- Grassitelli, L., Fossati, L., Simón-Díaz, S., et al. 2015, *ApJ*, 808, L31
- Gray, D. F. 2005, *The Observation and Analysis of Stellar Photospheres*, 3rd edn. (Cambridge University Press)
- Green, G. M., Schlafly, E. F., Finkbeiner, D., et al. 2018, *MNRAS*, 478, 651
- Groh, J. H., Ekström, S., Georgy, C., et al. 2019, *A&A*, 627, A24
- Guinan, E. F., Ribas, I., Fitzpatrick, E. L., et al. 2000, *ApJ*, 544, 409
- Handler, G., Jerzykiewicz, M., Rodríguez, E., et al. 2006, *MNRAS*, 365, 327
- Holgado, G., Simón-Díaz, S., Barbá, R. H., et al. 2018, *A&A*, 613, A65
- Horst, L., Edelmann, P. V. F., Röpk, F. K., et al. 2020, *A&A*, under review
- Howell, S. B., Sobek, C., Haas, M., et al. 2014, *PASP*, 126, 398
- Jenkins, J. M., Twicken, J. D., McCauliff, S., et al. 2016, in *Proc. SPIE*, Vol. 9913, *Software and Cyberinfrastructure for Astronomy IV*, 99133E
- Johnston, C., Pavlovski, K., & Tkachenko, A. 2019, *A&A*, 628, A25
- Kafer, A., Wolf, B., Andersen, J., & Pasquini, L. 1997, *The Messenger*, 89, 1
- Keszthelyi, Z., Meynet, G., Georgy, C., et al. 2019, *MNRAS*, 485, 5843
- Keszthelyi, Z., Meynet, G., Shultz, M. E., et al. 2020, *MNRAS*, 227
- Koch, D. G., Borucki, W. J., Basri, G., et al. 2010, *ApJ*, 713, L79
- Kraus, M., Hauke, M., Cidale, L. S., et al. 2015, *A&A*, 581, A75
- Krtićka, J. & Feldmeier, A. 2018, *A&A*, 617, A121
- Kurtz, D. W. 1985, *MNRAS*, 213, 773
- Langer, N. 2012, *ARA&A*, 50, 107
- Langer, N. & Kudritzki, R. P. 2014, *A&A*, 564, A52
- Lecoanet, D., Cantiello, M., Quataert, E., et al. 2019, *ApJ*, 886, L15
- Lecoanet, D. & Quataert, E. 2013, *MNRAS*, 430, 2363
- McCall, M. L. 2004, *AJ*, 128, 2144
- Miglio, A., Montalbán, J., & Dupret, M.-A. 2007, *MNRAS*, 375, L21
- Moffat, A. F. J., Marchenko, S. V., Zhilyaev, B. E., et al. 2008, *ApJ*, 679, L45
- Mombarg, J. S. G., Van Reeth, T., Pedersen, M. G., et al. 2019, *MNRAS*, 485, 3248
- Moravveji, E., Aerts, C., Pápics, P. I., Triana, S. A., & Vandoren, B. 2015, *A&A*, 580, A27
- Moravveji, E., Townsend, R. H. D., Aerts, C., & Mathis, S. 2016, *ApJ*, 823, 130
- Murphy, S. J. 2014, PhD thesis, Jeremiah Horrocks Institute, University of Central Lancashire, UK
- Pápics, P. I., Briquet, M., Baglin, A., et al. 2012, *A&A*, 542, A55
- Pedersen, M. G. 2020, PhD thesis, Institute of Astronomy, KU Leuven, Belgium
- Pedersen, M. G., Chowdhury, S., Johnston, C., et al. 2019, *ApJ*, 872, L9
- Raskin, G., van Winckel, H., Hensberge, H., et al. 2011, *A&A*, 526, A69
- Ricker, G. R., Winn, J. N., Vanderspek, R., et al. 2015, *Journal of Astronomical Telescopes, Instruments, and Systems*, 1, 014003
- Rogers, T. M. 2015, *ApJ*, 815, L30
- Rogers, T. M., Lin, D. N. C., McElwaine, J. N., & Lau, H. H. B. 2013, *ApJ*, 772, 21
- Rogers, T. M. & McElwaine, J. N. 2017, *ApJ*, 848, L1
- Saio, H., Kuschnig, R., Gautschi, A., et al. 2006, *ApJ*, 650, 1111
- Sana, H., de Mink, S. E., de Koter, A., et al. 2012, *Science*, 337, 444
- Schmid, V. S. & Aerts, C. 2016, *A&A*, 592, A116
- Shiode, J. H., Quataert, E., Cantiello, M., & Bildsten, L. 2013, *MNRAS*, 430, 1736
- Simón-Díaz, S., Aerts, C., Urbaneja, M. A., et al. 2018, *A&A*, 612, A40
- Simón-Díaz, S., Castro, N., Garcia, M., Herrero, A., & Markova, N. 2011, *Bulletin de la Societe Royale des Sciences de Liege*, 80, 514
- Simón-Díaz, S., Godart, M., Castro, N., et al. 2017, *A&A*, 597, A22
- Simón-Díaz, S. & Herrero, A. 2014, *A&A*, 562, A135
- Simón-Díaz, S., Herrero, A., Uytterhoeven, K., et al. 2010, *ApJ*, 720, L174
- Simón-Díaz, S., Negueruela, I., Maíz Apellániz, J., et al. 2015, in *Highlights of Spanish Astrophysics VIII*, ed. A. J. Cenarro, F. Figueras, C. Hernández-Monteagudo, J. Trujillo Bueno, & L. Valdivielso, 576–581
- Szewczuk, W. & Daszyńska-Daszkiewicz, J. 2017, *MNRAS*, 469, 13
- Szewczuk, W. & Daszyńska-Daszkiewicz, J. 2018, *MNRAS*, 478, 2243
- Telting, J. H., Avila, G., Buchhave, L., et al. 2014, *Astronomische Nachrichten*, 335, 41
- Thoul, A., Degroote, P., Catala, C., et al. 2013, *A&A*, 551, A12
- Tkachenko, A., Pavlovski, K., Johnston, C., et al. 2020, arXiv e-prints, arXiv:2003.08982
- Van Reeth, T., Tkachenko, A., Aerts, C., et al. 2015, *A&A*, 574, A17

Appendix A: Extended data tables

Table A.1. Parameters of OB stars studied in this work including common name, TIC number, spectral type, effective temperature ($\log_{10}(T_{\text{eff}})$), spectroscopic luminosity ($\log_{10}(\mathcal{L}/\mathcal{L}_{\odot})$), where $\mathcal{L} := T_{\text{eff}}^4/g$, projected surface rotational velocity ($v \sin i$), and macroturbulent broadening (v_{macro}), which are taken from Burssens et al. (2020).

Name	TIC	Sp. Type	$\log_{10}(T_{\text{eff}})$	$\log_{10}(\mathcal{L}/\mathcal{L}_{\odot})$	$v \sin i$ (km s ⁻¹)	v_{macro} (km s ⁻¹)
O dwarf stars:						
HD 96715	306491594	O4 V((f))z	4.66	4.10	59	86
HD 46223	234881667	O4 V((f))	4.62	4.16	60	91
HD 155913	216662610	O4.5 Vn((f))	4.63	3.88	278	–
HD 46150	234840662	O5 V((f))	4.61	4.03	71	94
HD 90273	464295672	ON7 V	4.59	3.95	55	55
HD 110360	433738620	ON7 V	4.59	3.60	96	86
HD 47839	220322383	O7 V	4.58	3.70	43	65
HD 53975	148506724	O7.5 Vz	4.56	3.74	181	–
HD 41997	294114621	O7.5 Vn((f))	4.55	3.85	262	–
HD 46573	234947719	O7 V((f))z	4.56	3.93	77	81
HD 48279	234009943	O8 V	4.55	3.76	131	74
HD 46056	234834992	O8 Vn	4.55	3.58	370	–
HD 38666	100589904	O9.5 V	4.53	3.59	111	56
HD 123056	330281456	O9.5 IV(n)	4.50	3.70	193	–
HD 74920	430625455	O7.5 IVn((f))	4.54	3.90	291	–
HD 135591	455675248	O8 IV((f))	4.54	3.99	60	60
HD 326331	339568114	O8 IVn((f))	4.54	3.82	332	–
HD 37041	427395049	O9.5 IVp	4.54	3.28	134	–
O giant stars:						
HD 97253	467065657	O5 III(f)	4.59	4.16	70	105
HD 93843	465012898	O5 III(fc)	4.57	4.15	58	120
HD 156738	195288472	O6.5 III(f)	4.58	3.87	65	103
HD 36861	436103278	O8 III((f))	4.55	4.06	53	75
HD 150574	234648113	ON9 III(n)	4.52	3.87	252	–
HD 152247	339570292	O9.2 III	4.51	3.94	82	96
HD 55879	178489528	O9.7 III	4.49	3.85	26	60
HD 154643	43284243	O9.7 III	4.49	3.85	101	78
HD 57061	106347931	O9 II	4.51	4.01	57	93
CPD-47 2963	30653985	O5 Ifc	4.57	4.16	67	110
HD 156154	152659955	O7.5 Ib(f)	4.53	4.22	62	102
HD 112244	406050497	O8.5 Iab(f)p	4.50	4.15	124	80
HD 151804	337793038	O8 Iaf	4.45	4.33	72	73
HD 303492	459532732	O8.5 Iaf	4.45	4.29	87	55
HD 152249	339567904	OC9 Iab	4.49	4.15	71	70
HD 152424	247267245	OC9.2 Ia	4.48	4.14	59	66
HD 154368	41792209	O9.5 Iab	4.48	4.28	65	78
HD 152003	338640317	O9.7 IabNwk	4.48	4.12	65	83
HD 152147	246953610	O9.7 IbNwk	4.48	4.04	91	64
B dwarf stars:						
HD 36960	427373484	B0.5 V	4.46	3.31	23	37
HD 37042	427395058	B0.7 V	4.47	3.06	33	13
HD 43112	434384707	B1 V	4.41	2.95	7	12
HD 35912	464839773	B2 V	4.26	2.44	11	21
HD 48977	202148345	B2.5 V	4.25	2.61	26	8
HD 34816	442871031	B0.5 IV	4.46	3.22	25	–
HD 46328	47763235	B0.5 IV	4.40	3.28	7	20
HD 50707	78897024	B1 IV	4.38	3.31	29	46
HD 37481	332913301	B1.5 IV	4.34	2.78	74	21
HD 37209	388935529	B2 IV	4.38	2.76	50	15
HD 26912	283793973	B3 IV	4.20	2.61	53	30
HD 37711	59215060	B3 IV	4.21	2.61	68	51
HD 57539	10176636	B3 IV	4.13	2.54	162	13
HD 41753	151464886	B3 IV	4.23	2.61	25	40
HD 224990	313934087	B5 IV	4.13	2.33	20	40
B giant stars:						

Table A.1. *continued.*

Name	TIC	Sp. Type	$\log_{10}(T_{\text{eff}})$	$\log_{10}(\mathcal{L}/\mathcal{L}_{\odot})$	$v \sin i$ (km s ⁻¹)	v_{macro} (km s ⁻¹)
HD 48434	234052684	B0 III	4.48	3.93	48	82
HD 61068	349043273	B2 III	4.39	3.08	12	23
HD 35468	365572007	B2 III	4.29	2.99	53	27
HD 44743	34590771	B1 II-III	4.37	3.20	24	40
HD 54764	95513457	B1 II	4.30	3.97	123	87
HD 52089	63198307	B2 II	4.34	3.60	26	50
HD 51309	146908355	B3 II	4.20	3.64	27	43
HD 46769	281148636	B5 II	4.11	3.16	70	23
HD 27563	37777866	B7 II	4.16	2.61	34	26
HD 53244	148109427	B8 II	4.14	2.74	36	21
HD 37128	427451176	B0 Ia	4.47	4.05	55	85
HD 38771	66651575	B0.5 Ia	4.47	4.06	53	83
HD 53138	80466973	B3 Iab	4.23	4.13	37	56
HD 39985	102281507	B9 Ib	4.11	2.34	26	28
Peculiar stars:						
HD 37061	427393920	O9.5 V	4.49	3.07	210	–
HD 37742	11360636	O9.2 IbvarNwk	4.47	4.15	122	97
HD 57682	187458882	O9.2 IV	4.54	3.62	12	38
HD 54879	177860391	O9.7 V	4.52	3.16	7	10

Table A.2. Optimised parameters for the morphology of low-frequency variability (cf. Eq. (2)) using a Bayesian MCMC fitting method.

Name	TIC	α_0 (μmag)	ν_{char} (d ⁻¹)	γ	C_w (μmag)
O dwarf stars:					
HD 96715	306491594	99.219 ± 0.039	5.74308 ± 0.00368	1.66987 ± 0.00101	3.210 ± 0.007
HD 46223	234881667	249.330 ± 0.047	3.99087 ± 0.00135	1.63706 ± 0.00041	5.766 ± 0.002
HD 155913	216662610	253.521 ± 0.033	6.15743 ± 0.00115	2.08883 ± 0.00054	6.635 ± 0.006
HD 46150	234840662	175.470 ± 0.044	3.95351 ± 0.00181	1.59155 ± 0.00050	4.480 ± 0.002
HD 90273	464295672	186.796 ± 0.051	2.96658 ± 0.00147	1.52985 ± 0.00051	6.361 ± 0.002
HD 110360	433738620	104.664 ± 0.061	2.36468 ± 0.00242	1.36668 ± 0.00116	11.971 ± 0.007
HD 47839	220322383	54.461 ± 0.046	3.78150 ± 0.00548	1.59141 ± 0.00212	3.900 ± 0.006
HD 53975	148506724	144.615 ± 0.055	2.77860 ± 0.00194	1.36739 ± 0.00071	2.631 ± 0.007
HD 41997	294114621	803.647 ± 0.040	2.61022 ± 0.00018	2.32176 ± 0.00023	9.622 ± 0.004
HD 46573	234947719	409.204 ± 0.058	2.00862 ± 0.00051	1.43600 ± 0.00027	3.883 ± 0.006
HD 48279	234009943	262.925 ± 0.052	2.77586 ± 0.00089	1.73500 ± 0.00053	11.124 ± 0.005
HD 46056	234834992	56.700 ± 0.026	9.05220 ± 0.00551	2.45063 ± 0.00266	7.696 ± 0.006
HD 38666	100589904	20.239 ± 0.048	4.06758 ± 0.01641	1.73389 ± 0.00697	1.246 ± 0.006
HD 123056	330281456	268.094 ± 0.033	4.01672 ± 0.00065	2.46953 ± 0.00073	8.208 ± 0.005
HD 74920	430625455	367.615 ± 0.036	3.66392 ± 0.00053	2.18152 ± 0.00040	4.029 ± 0.005
HD 135591	455675248	343.595 ± 0.061	1.97700 ± 0.00066	1.38857 ± 0.00026	2.235 ± 0.002
HD 326331	339568114	1196.544 ± 0.056	2.20987 ± 0.00017	1.75566 ± 0.00012	9.365 ± 0.005
HD 37041	427395049	48.977 ± 0.085	0.93624 ± 0.00304	1.43815 ± 0.00304	4.910 ± 0.005
O giant stars:					
HD 97253	467065657	837.597 ± 0.048	2.20426 ± 0.00019	2.06179 ± 0.00020	5.257 ± 0.004
HD 93843	465012898	489.559 ± 0.060	2.60714 ± 0.00055	1.68517 ± 0.00032	2.333 ± 0.006
HD 156738	195288472	350.922 ± 0.032	4.38608 ± 0.00054	2.42795 ± 0.00045	9.671 ± 0.005
HD 36861	436103278	330.703 ± 0.064	2.05434 ± 0.00077	1.39102 ± 0.00030	1.453 ± 0.002
HD 150574	234648113	1156.742 ± 0.049	2.47023 ± 0.00017	1.92152 ± 0.00014	14.547 ± 0.005
HD 152247	339570292	661.325 ± 0.043	2.75008 ± 0.00027	2.14782 ± 0.00024	10.339 ± 0.004
HD 55879	178489528	191.802 ± 0.063	1.71966 ± 0.00108	1.42054 ± 0.00056	3.195 ± 0.002
HD 154643	43284243	495.620 ± 0.061	1.83226 ± 0.00041	1.48131 ± 0.00021	5.148 ± 0.002
HD 57061	106347931	1261.169 ± 0.078	1.41680 ± 0.00014	1.84189 ± 0.00017	3.970 ± 0.005
CPD-47 2963	30653985	705.866 ± 0.043	2.53356 ± 0.00019	2.91261 ± 0.00047	6.488 ± 0.004
HD 156154	152659955	1911.500 ± 0.056	1.76469 ± 0.00008	1.96280 ± 0.00009	13.637 ± 0.004
HD 112244	406050497	4203.703 ± 0.090	0.91870 ± 0.00003	1.93925 ± 0.00006	19.509 ± 0.004
HD 151804	337793038	3642.777 ± 0.055	0.93978 ± 0.00001	4.26287 ± 0.00024	36.297 ± 0.004
HD 303492	459532732	3447.949 ± 0.057	0.85247 ± 0.00001	4.45373 ± 0.00027	11.850 ± 0.002
HD 152249	339567904	2144.886 ± 0.044	1.76168 ± 0.00005	2.94309 ± 0.00015	27.729 ± 0.004

Table A.2. *continued.*

Name	TIC	α_0 (μmag)	ν_{char} (d^{-1})	γ	C_w (μmag)
HD 152424	247267245	5315.488 ± 0.059	0.95329 ± 0.00001	3.42169 ± 0.00011	38.442 ± 0.004
HD 154368	41792209	1971.732 ± 0.037	1.85794 ± 0.00004	4.70571 ± 0.00034	24.824 ± 0.004
HD 152003	338640317	4459.742 ± 0.090	0.92626 ± 0.00003	1.76747 ± 0.00005	18.221 ± 0.004
HD 152147	246953610	3879.566 ± 0.060	1.13960 ± 0.00002	2.43834 ± 0.00008	27.977 ± 0.004
B dwarf stars:					
HD 36960	427373484	30.868 ± 0.047	1.83618 ± 0.00375	2.46009 ± 0.00780	3.814 ± 0.004
HD 37042	427395058	57.494 ± 0.066	1.20717 ± 0.00210	1.84494 ± 0.00334	9.116 ± 0.004
HD 43112	434384707	6.269 ± 0.117	0.76982 ± 0.03045	1.16679 ± 0.02216	3.770 ± 0.006
HD 35912	464839773	241.602 ± 0.048	2.08064 ± 0.00049	3.01021 ± 0.00161	5.396 ± 0.005
HD 48977	202148345	311.431 ± 0.066	1.46731 ± 0.00043	2.33096 ± 0.00098	4.565 ± 0.005
HD 34816	442871031	61.383 ± 0.114	0.66173 ± 0.00244	1.34255 ± 0.00275	1.445 ± 0.005
HD 46328	47763235	54.479 ± 0.112	1.08885 ± 0.00425	1.34896 ± 0.00326	3.490 ± 0.007
HD 50707	78897024	132.110 ± 0.035	4.27661 ± 0.00197	1.75206 ± 0.00061	2.889 ± 0.002
HD 37481	332913301	26.284 ± 0.061	1.23368 ± 0.00330	3.20558 ± 0.03687	3.132 ± 0.005
HD 37209	388935529	26.461 ± 0.097	0.82600 ± 0.00426	2.35097 ± 0.02790	3.195 ± 0.005
HD 26912	283793973	299.788 ± 0.061	1.15152 ± 0.00028	3.05793 ± 0.00195	3.078 ± 0.004
HD 37711	59215060	916.636 ± 0.058	0.86817 ± 0.00006	3.34037 ± 0.00062	9.476 ± 0.004
HD 57539	10176636	154.777 ± 0.044	2.60349 ± 0.00099	3.06784 ± 0.00251	5.565 ± 0.004
HD 41753	151464886	302.331 ± 0.048	1.27728 ± 0.00023	3.47522 ± 0.00175	12.424 ± 0.004
HD 224990	313934087	23.296 ± 0.065	1.57162 ± 0.00700	2.09149 ± 0.00988	2.084 ± 0.004
B giant stars:					
HD 48434	234052684	1647.090 ± 0.063	1.47146 ± 0.00009	2.00588 ± 0.00013	8.813 ± 0.004
HD 61068	349043273	198.120 ± 0.090	1.36075 ± 0.00121	1.35714 ± 0.00076	5.256 ± 0.007
HD 35468	365572007	86.576 ± 0.078	0.80155 ± 0.00110	1.95155 ± 0.00305	1.895 ± 0.004
HD 44743	34590771	133.771 ± 0.080	1.96975 ± 0.00220	1.35040 ± 0.00106	8.802 ± 0.008
HD 54764	95513457	1949.927 ± 0.070	0.96136 ± 0.00005	2.04624 ± 0.00014	10.902 ± 0.004
HD 52089	63198307	222.135 ± 0.069	1.30671 ± 0.00070	1.63586 ± 0.00065	2.109 ± 0.002
HD 51309	146908355	1572.988 ± 0.087	0.66617 ± 0.00006	2.15494 ± 0.00023	5.917 ± 0.002
HD 46769	281148636	6.763 ± 0.056	1.02897 ± 0.01017	2.76723 ± 0.07812	3.139 ± 0.004
HD 27563	37777866	264.680 ± 0.059	0.97211 ± 0.00025	3.49058 ± 0.00231	3.479 ± 0.004
HD 53244	148109427	10.428 ± 0.065	0.79102 ± 0.00547	3.30717 ± 0.06935	1.444 ± 0.004
HD 37128	427451176	2562.785 ± 0.069	0.87736 ± 0.00003	2.28089 ± 0.00012	19.682 ± 0.004
HD 38771	66651575	1159.940 ± 0.083	0.87575 ± 0.00010	1.91176 ± 0.00022	8.819 ± 0.004
HD 53138	80466973	1313.016 ± 0.108	0.44918 ± 0.00005	2.39756 ± 0.00043	5.089 ± 0.002
HD 39985	102281507	8.600 ± 0.081	1.02655 ± 0.01553	1.82852 ± 0.03437	3.579 ± 0.005
Peculiar stars:					
HD 37061	427393920	34.886 ± 0.068	1.64256 ± 0.00459	2.41671 ± 0.01151	3.237 ± 0.005
HD 37742	11360636	829.560 ± 0.070	1.41864 ± 0.00016	2.41592 ± 0.00042	7.544 ± 0.005
HD 57682	187458882	159.073 ± 0.095	1.11609 ± 0.00138	1.16316 ± 0.00080	3.029 ± 0.007
HD 54879	177860391	32.960 ± 0.052	1.26842 ± 0.00235	3.41894 ± 0.01621	5.871 ± 0.004

Appendix B: Fitted amplitude spectra figures

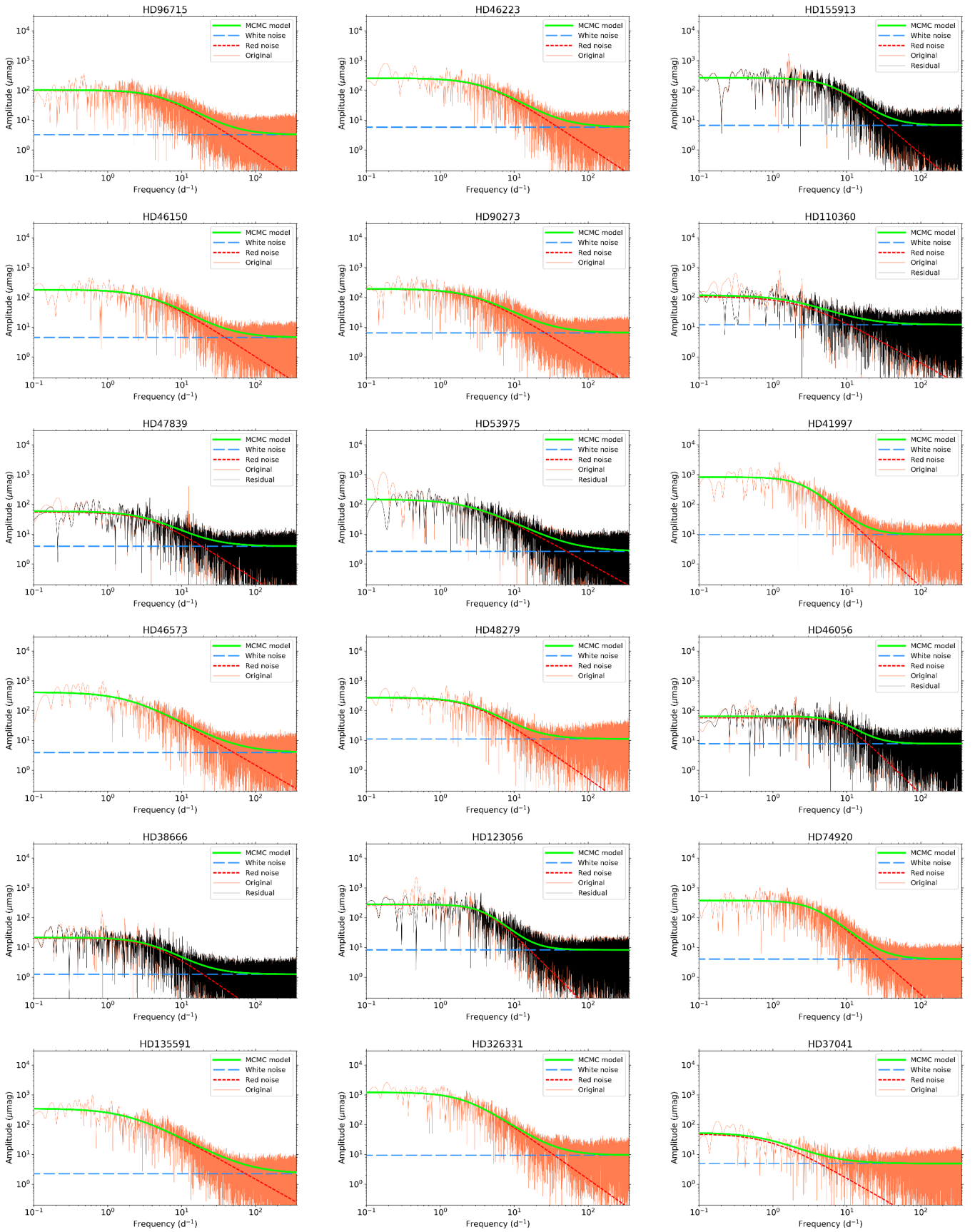


Fig. B.1. Fitted logarithmic amplitude spectra of stars given in Table A.2. Line styles and colours are the same as in Fig. 1.

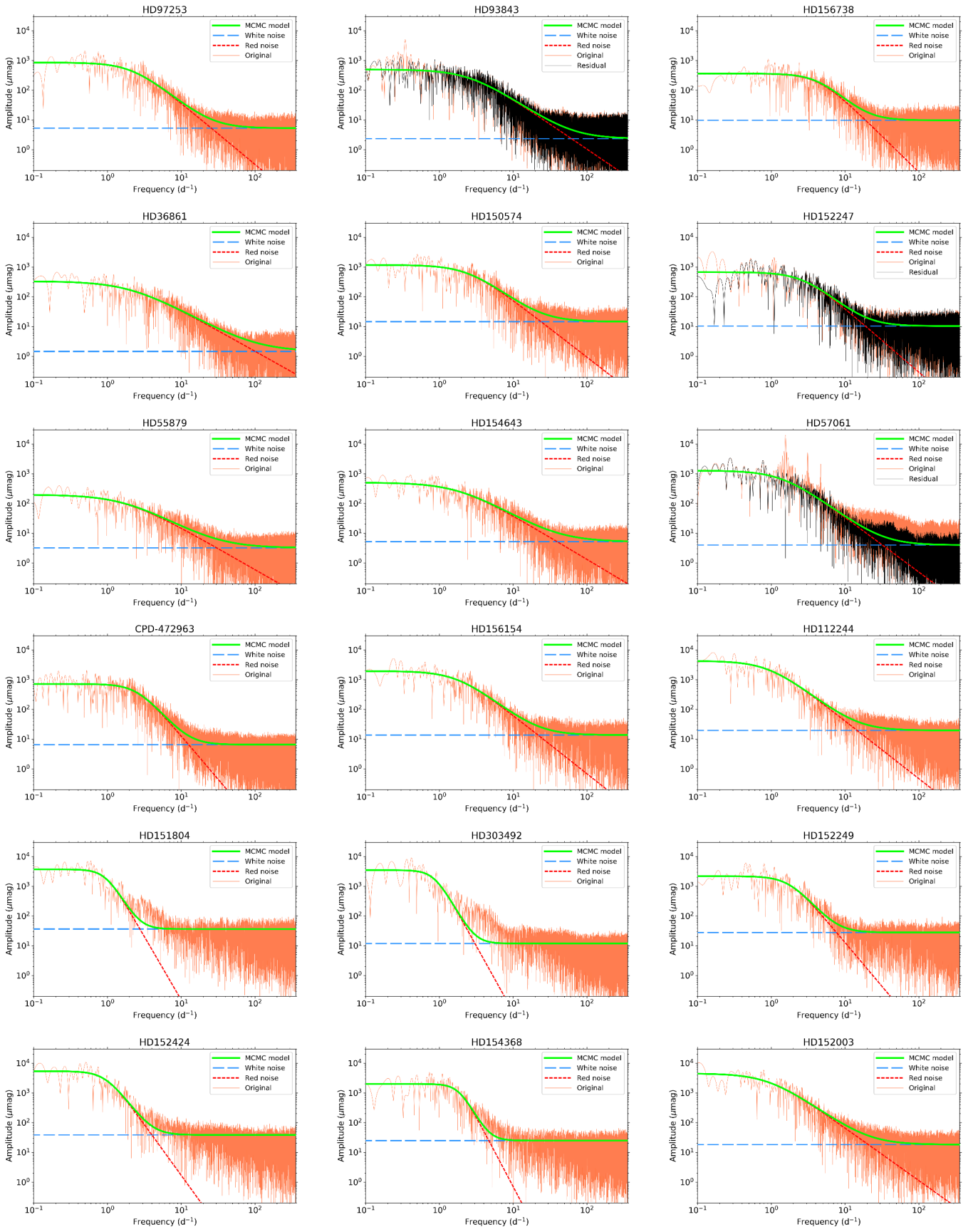


Fig. B.2. Fitted logarithmic amplitude spectra of stars given in Table A.2. Line styles and colours are the same as in Fig. 1.

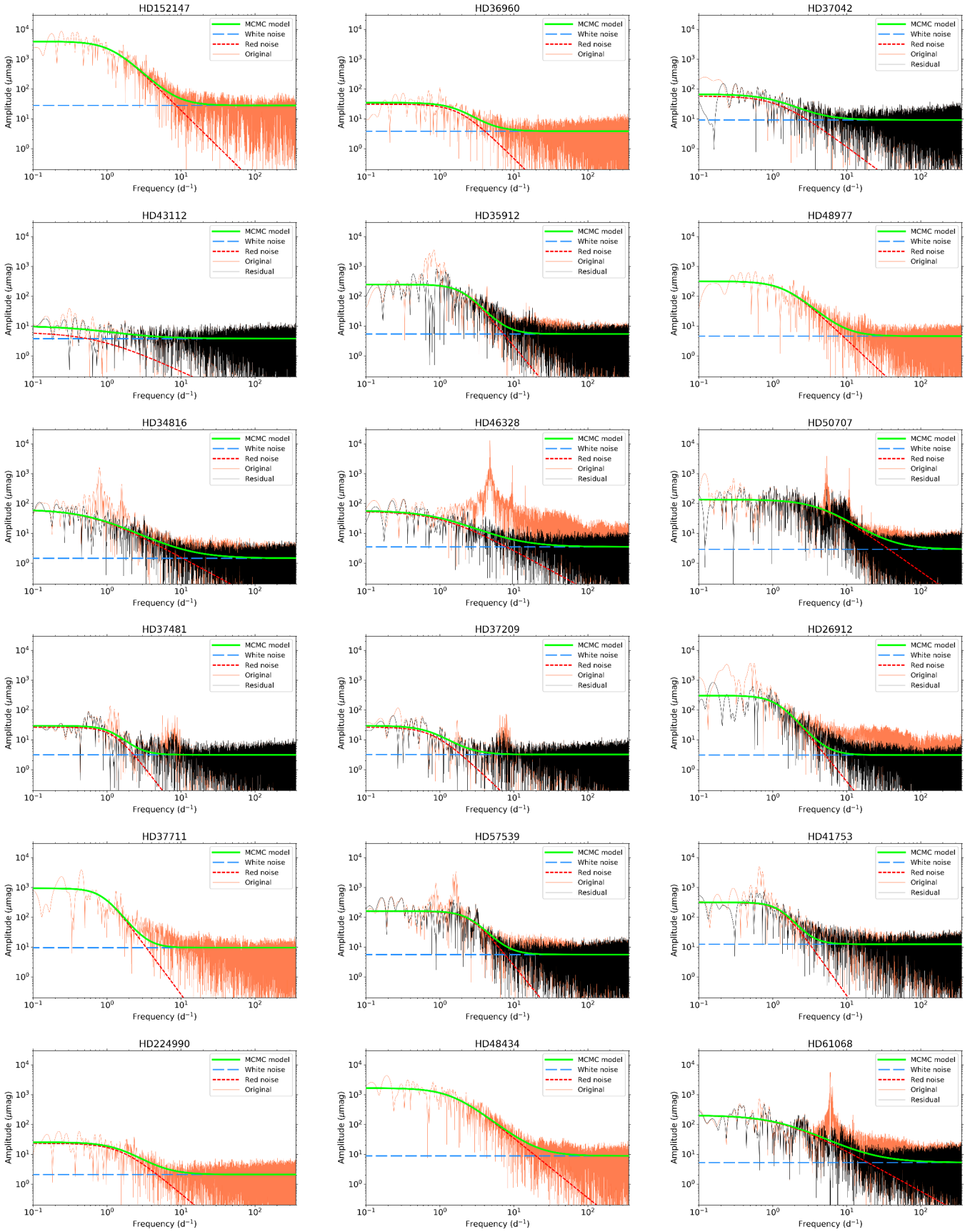


Fig. B.3. Fitted logarithmic amplitude spectra of stars given in Table A.2. Line styles and colours are the same as in Fig. 1.

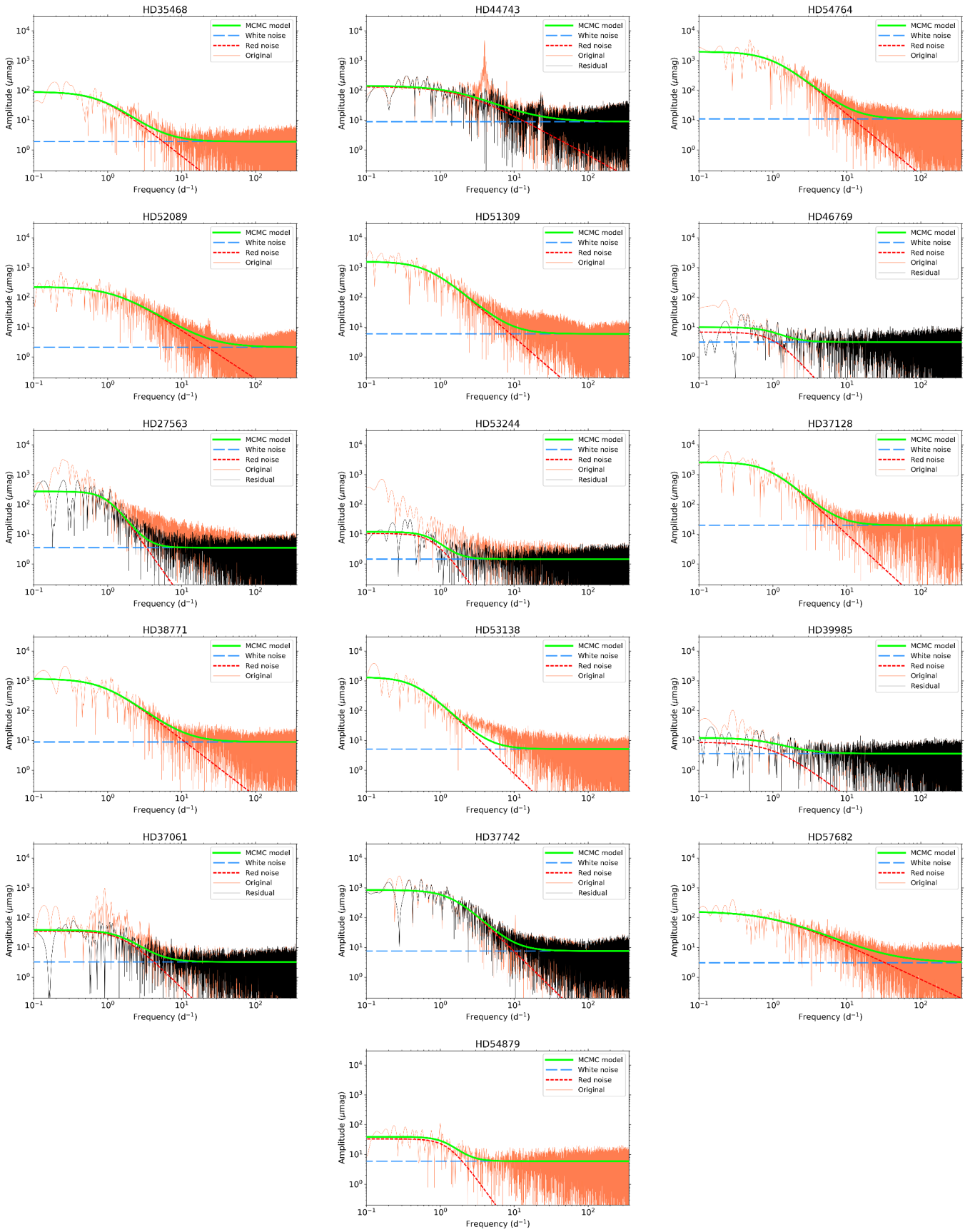


Fig. B.4. Fitted logarithmic amplitude spectra of stars given in Table A.2. Line styles and colours are the same as in Fig. 1.