

Short-term variability and mass loss in Be stars

VI. Frequency groups in γ Cas detected by TESS

J. Labadie-Bartz¹, D. Baade², A. C. Carciofi¹, T. Rivinius³, C. C. Borre⁴, A. Rubio¹, Ch. Martayan³, and R. J. Siverd⁵

¹ Instituto de Astronomia, Geofísica e Ciências Atmosféricas, Universidade de São Paulo, Rua do Matão 1226, Cidade Universitária, 05508-900 São Paulo, SP, Brazil; e-mail: jbartz@usp.br

² European Organisation for Astronomical Research in the Southern Hemisphere (ESO), Karl-Schwarzschild-Str. 2, 85748 Garching b. München, Germany; e-mail: dbaade@eso.org

³ European Organisation for Astronomical Research in the Southern Hemisphere (ESO), Casilla 19001, Santiago 19, Chile

⁴ Stellar Astrophysics Centre, Department of Physics and Astronomy, Aarhus University, Ny Munkegade 120, DK-8000 Aarhus C, Denmark.

⁵ Gemini Observatory/NSF's NOIRLab, 670 N. A'ohoku Place, Hilo, HI, 96720, USA

Received ??; accepted ??

ABSTRACT

In photometry of γ Cas (B0.5 IVe) from the SMEI and BRITe-Constellation satellites, Borre et al. (2020) recently found indications of low-order nonradial pulsation (NRP) which would establish an important commonality with the class of classical Be stars at large. New photometry with the TESS satellite for ~ 27 d each in Sectors 17, 18, and 24 has detected three frequency groups near 1.1 (g_1), 2.4 (g_2), and 5.1 (g_3) d^{-1} , respectively. Some individual frequencies are nearly harmonics or combination frequencies but not exactly so. Frequency groups are known from roughly three quarters of all classical Be stars and also from pulsations of β Cep, SPB, and γ Dor stars and, therefore, firmly establish γ Cas as a nonradial pulsator. The total power in each frequency group is variable. An isolated feature exists at 7.57 d^{-1} and, together with the strongest peaks in the second and third groups ordered by increasing frequency (g_2 and g_3), is the only one detected in all three TESS sectors. The former long-term 0.82 d^{-1} variability would fall into g_1 and has not returned at a significant level, questioning its attribution to rotational modulation (Smith et al. 2006). **Low frequency stochastic variability is a dominant feature of the TESS light curve, possibly caused by internal gravity waves excited at the interface of the convective core and radiative envelope. These are known to be efficient at transporting angular momentum outward, and may also drive the oscillations that constitute g_1 and g_2 . The hard X-ray flux of γ Cas is the only remaining major property that distinguishes this star from the class of classical Be stars.**

Key words. Stars: massive - stars: mass loss - stars: emission-line, Be - stars: oscillations - stars: individual: γ Cassiopeiae, HR 2817, HD 71042, HD 144555, HD 156172

1. Introduction

The eponymous emission lines of classical Be stars (for a broad review see Rivinius et al. 2013) form in a rotationally supported equatorial disk that unequivocally consists of material ejected from the star itself. Although Be stars rotate closer to the critical rate than all other stars on and near the main sequence, additional energy and angular momentum are required to lift matter into an orbit. Under the influence of viscous friction (Haubois et al. 2012; Rímulo et al. 2018) and radiative ablation (Kee et al. 2018), Be disks decay on timescales of months to years. Much of the necessary regular replenishment of the disk seems to take place in the form of stellar outbursts. From space photometry, evidence has been found (Baade et al. 2018a,c; Baade & Rivinius 2020) that the superposition of nonradial pulsation (NRP) modes can lead to nonlinear coupling, resulting in enhanced amplitudes that are much larger than the sum of the individual mode amplitudes. In this way, enough energy may be available and released for the ejection of matter into the disk. A small part of the ejecta accumulates the necessary specific angular momentum through viscous redistribution while most of the rest falls back to the star (Okazaki et al. 2002; Haubois et al. 2012).

The largest sample of Be stars with time-series photometry from space is currently being assembled by the TESS satellite (described in Sect. 3.1). A first reconnaissance analysis by Labadie-Bartz & Carciofi (2020) found a considerable diversity of variability types (see also Balona & Ozuyar 2020). One of them is the presence of distinct frequency groups, here understood as an assembly of frequencies (3 or more) that are usually no more than a few tenths of d^{-1} from each other. They occur in about three quarters of all classical Be stars. Their fraction drops from more than 80% among early-type Be stars to less than 60% at late types. However, the decline is also a matter of instrumental sensitivity, as the photometric amplitudes fall sharply towards the late portion of the B spectral type (e.g. Saio et al. 2007). Frequency groups in Be stars have also been detected with all other stellar space photometers that have observed Be stars, namely MOST (Walker et al. 2005), CoRoT (Semaan et al. 2018), Kepler (Kurtz et al. 2015), and BRITe (Baade et al. 2018c). In the majority of cases, three main groups are found: one at very low frequencies (hereafter g_0 , $\sim 0.05 d^{-1}$), one centered roughly between 0.5 and 3 d^{-1} (hereafter g_1), and the third one (hereafter g_2) centered at approximately twice the frequencies of the middle group and is often very crudely twice as wide as the middle one. Additional frequency groups may also exist, typically near

integer multiples of g_1 and g_2 , and usually with relatively lower amplitudes. During outbursts of Be stars, the appearance of frequency groups can change drastically (Huat et al. 2009).

Pápics et al. (2017) and Baade et al. (2018c) have suggested, and partly illustrated by examples, that, in Be stars, the central group (g_1) may consist of genuine pulsation frequencies, the low group (g_0) may be mainly populated by difference frequencies of the middle group, and the high group (g_2) may be primarily comprised of sum frequencies and first harmonics, also of the middle group. Frequency groups have also been reported for β Cep, SPB stars, and γ Dor stars (McNamara et al. 2012) so that they are not specific to Be stars and not even restricted to B-type stars. Recently, Saio et al. (2018a) developed the idea that frequency groups form when rapid rotation displaces the eigenfrequencies of sectoral modes such as to coincide - and resonate - with combination and/or harmonic frequencies of the base modes.

This paper reports the detection of frequency groups in the prominent Be star γ Cas. Sect. 2 introduces γ Cas and similar stars and discusses the spectroscopic and photometric history of the system up until the epoch of TESS. The TESS satellite and its observations, and the extraction of data and their processing are discussed in Sect. 3. The time-series analysis (TSA) of TESS data is performed in Sect. 4, Sect. 5 discusses the results and places them in context with comparisons to (recent) historical data for γ Cas and other Be stars, and Sect. 6 summarizes the conclusions.

2. γ Cas

2.1. Previous observations and γ Cas-like stars

Since γ Cas (27 Cas, HR 264, HD 5394, HIP 4427, TIC 51962733; B0.5 IVe) was the first Be star discovered (Secchi 1866), it was only natural to consider it the prototypical Be star. However, Harmanec (2002) compiled several observations that make the prototype character of γ Cas less obvious but by no means implausible. γ Cas could be a relatively extreme representative of its cohort, not least because hardly any other Be star has been observed as intensively as γ Cas has. More challenging to γ Cas's status were (i) the ubiquity of low-order NRPs in Be stars (Rivinius et al. 2003; Semaan et al. 2018), which, in γ Cas, remained undetected for a long time (Borre et al. 2020), and (ii) the presence in γ Cas of a thermal X-ray flux at a level intermediate between that from shocks in winds of luminous OB stars and that from accretion in high-mass X-ray binaries but exhibiting a hardness without equivalent in other early-type stars (Smith et al. 2016). These X-ray properties are shared by a small but still growing fraction of Be stars (Nazé et al. 2020).

The apparent restriction to Be stars of such X-ray properties suggests that the circumstellar disk plays a role in their formation. Smith et al. (2016) describe the notion, developed in several earlier papers by the same authors and their collaborators, that the X-rays are due to the interplay between two magnetic fields, one in the disk and one in the photosphere which, however, are not directly detected. The stellar one was proposed to manifest itself indirectly by rotational modulation of the stellar brightness. The corresponding 0.82 d^{-1} frequency was detectable for a decade but disappeared later (Henry & Smith 2012; Borre et al. 2020). The field in the disk was assumed to lead to magneto-rotational instability (MRI) so that gas parcels may fall back to the star, on the way to the photosphere are accelerated by the postulated stellar magnetic field, and finally release their gravito-kinetic energy as X-rays. Recent observations of the γ Cas-like

star π Aqr showed that a strong long-term increase in the $H\alpha$ line emission was not accompanied by a similar change in the X-ray flux (Nazé et al. 2019).

In the picture of Smith et al. (2016) for γ Cas, the 0.82 d^{-1} rotation rate is important for two reasons. First, it is very nearly the star's critical rotation frequency which Smith et al. invoke to activate effective local envelope dynamos. Second, the highest possible stellar rotation rate is needed to explain the rate of propagation of migrating subfeatures in spectral lines as corotation of exophotospheric cloudlets with the photosphere. It should be noted that several of the data strings discussed by Smith et al. in this regard hardly cover a single rotation period and even less. If these features are due to traveling waves such as high-order NRP and possess their own prograde angular velocity, the frequency window of the possible stellar rotation rate obviously becomes much wider. The model does not state which physical quantity is advected by the rotation and leads to the photometric variability nor does it explain the high phase coherence.

Near the main sequence, $\sim 10\%$ of all massive OBA stars possess large-scale magnetic fields (e.g. Grunhut et al. 2017; Sikora et al. 2019). The most notable exception to this rule are classical Be stars for which a survey of 85 objects did not yield a single detection (down to a detection limit of $\sim 50 - 100$ Gauss; Wade et al. 2016). This is generally understood as an incompatibility of a stable Keplerian disk with large-scale magnetic fields of ~ 100 Gauss or stronger (Owocki 2006; ud-Doula et al. 2018). Because the small-scale magnetic fields invoked for X-ray production in γ Cas-like stars (i.e. classical Be stars with hard thermal X-ray flux) are too ill constrained by observations, it is not known whether they would lead to a similarly prohibitive magnetic coupling between star and disk.

Furthermore, the current magnetic concept does not incorporate the presence of a companion star that was discovered in some of these so-called γ Cas-like stars, including γ Cas itself (Nemravová et al. 2012) and π Aqr (Bjorkman et al. 2002). The companions have not so far been seen directly in any part of the spectrum, but have been inferred from radial velocity measurements of the Be star or its disk. Under the assumption that the secondaries are compact objects, some of the X-ray observations have been attributed to accretion (Hamaguchi et al. 2016; Postnov et al. 2017; Tsujimoto et al. 2018). A more Be-star-specific model was recently developed by Langer et al. (2020) which explains the X-ray flux by the interaction of the fast wind of a helium star with the Be disk. While the Smith et al. model predicts that all (early-type) Be stars may develop γ Cas-like X-ray activities, the Be + helium-star and Be + compact object models are obviously only applicable if the assumed companion exists. Such companions may be numerous but are not easy to detect (Wang et al. 2018; Klement et al. 2019; Langer et al. 2020).

The first possible evidence of NRP in γ Cas was presented by Ninkov et al. (1983) and later ascertained by Yang et al. (1988) using additional observations. It consisted of multiple narrow features traversing photospheric line profiles from the most negative to the most positive velocities. The inferred azimuthal mode orders, $|m|$, were $\sim 12 \pm 4$. From a short series of spectra, Horaguchi et al. (1994) confirmed the presence of the line-profile variability a few years later. While rotational Doppler spreading enhances the spectroscopic visibility of high-order NRP modes, their photometric effects are strongly reduced in integral light. Low-order modes ($m \approx -2$) that are typical of many other (not quite as hot) Be stars (Rivinius et al. 2003; Labadie-Bartz et al. 2017; Semaan et al. 2018) were not reported. Furthermore, ground-based photometry did not indicate multiperiodicity (Henry & Smith 2012), the tell-tale signature

of NRP. Therefore, [Borre et al. \(2020\)](#) analyzed medium-high-cadence photometry by several satellites with a time span of 8+4 years (16 years in total). The observations confirmed that the 0.82 d^{-1} variability ([Smith et al. 2016](#)) has faded below detectability even from space. Instead, variability with frequencies of 1.25 and 2.48 d^{-1} was found, thereby probably re-uniting γ Cas with its nonradially pulsating brethren because both frequencies are too high to be due to any rotational modulation. However, with just two frequencies, one of which (1.25 d^{-1}) was only marginally detected, the evidence for NRP was not overwhelmingly broad, especially since it could not be confirmed that 2.48 d^{-1} is associated with the B-star primary and not with, e.g., the rotation of its invisible companion.

In a recent remarkably thorough study of the γ Cas-like stars π Aqr and BZ Cru, [Nazé et al. \(2020\)](#) found strong spectroscopic and photometric evidence of high-order prograde tesseral NRP modes ($l \sim 6 \pm 2, |m| \sim 2_{-1}^{+2}$) with frequencies that fall into the range of p -modes ($\sim 7 - 12 \text{ d}^{-1}$). These rapid line profile variations in π Aqr were first reported in [Rivinius et al. \(2003\)](#), and were later estimated to correspond to an $l = -m = 5$ prograde mode in [Peters & Gies \(2005\)](#). π Aqr was observed during very different states of the disk but the spectroscopic signature of the migrating subfeatures was unaffected. Therefore, the variability is stellar, and the range in velocity of these features shows that they are associated with the Be star, not its companion, which is less easily deduced from photometry only. [Nazé et al.](#) do not link the high-order nonradial pulsations to the X-ray properties of γ Cas-like stars but insist that the - in grayscale plots of difference spectra - very similar variability on comparable timescales to γ Cas itself is the manifestation of corotating exophotospheric cloudlets. Interestingly, the authors report that the difference between two frequencies in π Aqr near 11.8 d^{-1} corresponds to the 3.1 yr interval between two outbursts with amplitude 0.25 mag during the long course of which some pulsation amplitudes changed. This is similar to what has been described by [Baade et al. \(2018a,c\)](#) for other Be stars and can involve similarly long timescales ([Baade et al. 2018b](#)). It would be the first such case linked to p -mode pulsations. However, [Nazé et al.](#) caution that partial obscuration of the stellar disk by the circumstellar disk may be the cause.

[Balona & Ozuyar \(2020\)](#) have proposed another model with magnetic fields that are too weak for detection with current means. The model is suggested for Be stars at large and assumes a tilted dipole field that causes matter ejected by reconnection events from magnetic spots to accumulate at two opposite locations in the equatorial plane. Depending on the relative strength of these two clouds, variations with the stellar rotation frequency or its first harmonic may occur. Because the trapped matter is in all coordinates only loosely locked and its amount will not be constant, coherent variations are not predicted. The model may not easily explain the mostly sinusoidal shape of the light curves of many periodic Be stars.

Although [Balona & Ozuyar](#) do not point this out, the phenomenon they describe seems to have its spectroscopic counterpart in Štefl frequencies ([Štefl et al. 1998](#); [Baade et al. 2016](#)). Their signature is the variability in **anti-phase with respect to each other** of double emission peaks in the extreme wings of HeI and other lines and occurs in phases of enhanced mass loss when there is enough gas to produce helium line emission. Štefl frequencies are typically $\sim 10\%$ lower than that of the dominating spectroscopic quadrupole g mode. Therefore, Štefl frequencies are thought to form in newly ejected matter orbiting in the inner disk that is not yet equalized in azimuth. They would,

therefore, be unrelated to the actual stellar rotation but to orbital periods in the disk. However, they would be asymptotic tracers of the critical stellar rotation rate, **as it sets an upper limit for the Štefl frequency.** For the same reasons as in the magnetic model of [Balona & Ozuyar](#), phase coherent variability is not expected. In spite of the large physical differences between the two competing explanations of the Štefl frequencies, the expected high similarity of the photometric behavior seems to suggest that photometry alone is not likely to be able to distinguish between them. However, this is only true if the discussion focuses on just one frequency. For a more complete understanding of Be stars, the full ensemble of frequencies needs to be considered.

One important point which plain rotating models necessarily fail to account for is the large-scale, large-amplitude photospheric velocity field that is particularly prominent at low inclinations. However, this characteristic line-profile variability is well described by nonradial g -mode pulsation ([Maintz et al. 2003](#)).

2.2. Recent spectroscopic and photometric context

The *viscous decretion disk* (VDD; [Lee et al. 1991](#); [Carciofi 2011](#)) model successfully describes the majority of observed properties of Be star disks and their variability with time, including the regions in which certain observables are formed and the associated timescale and magnitude of changes in these observables during epochs of disk build up or dissipation ([Haubois et al. 2012, 2014](#)). Of particular relevance to the present study of γ Cas, the visible continuum arises in the inner-most disk (with about 1 – 2 stellar radii) due to an increased continuum emission by the ejecta, mostly due to hydrogen free-bound recombination and also electron scattering, and can change rapidly in response to a change in the environment near to the star. By contrast, the $H\alpha$ line is formed over a large region of the disk where viscous timescales are much longer, and small additions of material (relative to the already large amount of $H\alpha$ -emitting material) contribute little to the overall line strength.

The $H\alpha$ emission has been gradually and steadily trending upward from about 2001 until the epoch of TESS, growing in the absolute value of the equivalent width (EW) from $\sim 25 \text{ \AA}$ to 37 \AA and in the flux ratio of emission-peak to continuum (E/C) from ~ 3.5 to 5.5 ([Pollmann 2009](#); [Nemravová et al. 2012](#); [Borre et al. 2020](#)). However, a disk has existed for decades even prior to 2001 ([Doazan et al. 1983](#); [Harmanec 2002](#)). This trend has continued beyond the TESS observations reported in this paper as seen in recent spectra in the Be Star Spectra Database (BeSS¹; [Neiner et al. 2011](#)). In other words, the disk of γ Cas was strong and apparently growing during the TESS observations, having been built up over decades, and the amount of material in the disk at the time of the TESS observations was higher than during the period studied by [Borre et al. \(2020\)](#). In a strong and dense disk such as this the photometric sensitivity à la VDD to additional matter injected may be (partly) saturated when the scattering of stellar photons may increase underproportionally ([Ghoreyshi et al. 2018](#)). This would (possibly strongly) dilute the photometric signature of any discrete or short-lived episodes of enhanced mass ejection, provided the geometry of the inner disk is not significantly altered. However this effect would not drastically reduce the variability that arises in the photosphere (e.g. pulsation).

¹ <http://basebe.obspm.fr>

Table 1: TESS observation of γ Cas.

BJD start	BJD end	Sector	Camera	CCD	n_{obs}
2458764.69	2458789.69	17	2	1	1070
2458790.67	2458815.02	18	2	2	1017
2458955.80	2458982.26	24	4	4	1225

3. Observations and data reduction

3.1. The TESS observatory

The four identical 10 cm cameras of the Transiting Exoplanet Survey Satellite (TESS; [Ricker et al. 2015](#)) cover a combined field of view of $24^\circ \times 96^\circ$ that extends from the ecliptic plane to one of its poles. With 13 steps in ecliptic longitude, one hemisphere is observed in one year. Depending on ecliptic latitude, stars are observed in up to 13 such sectors, each spanning ~ 27.4 d in time.

The focal-plane array of each TESS camera comprises a 2×2 mosaic of CCDs with 2048×2048 pixels each and records light over the range 600 to 1050 nm, which includes the conventional *I* and *Z* and portions of the *V*, *R*, and *Y* bands. 90% of the flux contained in the point-spread function (PSF) is ensquared within 4×4 pixels, each which measure 0.35 arcmin on a side.

Stars brighter than ~ 7.5 in I_C saturate the pixel at the center of the PSF on the TESS CCDs (but precise light curves are still produced for stars much brighter than this; see Sect. 3.3). For optimal targets, the noise floor is approximately 60 ppm h^{-1} . Photon noise dominates down to $I_C \approx 13.5$ mag. Owing to its very wide and elongated orbit, TESS can perform uninterrupted observations for more than 300 h, is not plagued by near-Earth radiation belts, and suffers only little from terrestrial and lunar stray light (which is the main source of systematic trends). The Full Frame Images (FFIs) for the entire CCD are available at a 30-minute cadence from which light curves can be extracted for any star observed by TESS, and a selection of targets are also observed in a 2-minute cadence mode.

3.2. TESS observations of γ Cas

The ranges in barycentric Julian Date (BJD), the TESS sectors, the CCDs, and the number of data points used for time-series analysis (TSA) are provided in Table 1. γ Cas was observed in two consecutive sectors (50.3 days; Sectors 17 and 18), followed by a 141 day gap and was again observed in Sector 24 for an additional 26.5 days. This makes it impossible to trace any variations with the binary orbital period of 203.55 d ([Nemravová et al. 2012](#)). γ Cas was not among the targets pre-selected for 2-minute cadence observations, so the full frame images with 30-minute cadence, available for download at MAST², were instead used (TESS Input Catalog ID: TIC 51962733).

3.3. Data extraction and processing

For each sector, a target pixel file from the TESS Full Frame Images (FFIs) centered on γ Cas was downloaded with TESScut³ ([Brasseur et al. 2019](#)). The size in pixels was chosen to adequately capture the extent of the bloom columns, which span up to 101 rows (20×130 pixels for Sectors 17 and 18, and 20×150 pixels for Sector 24). Although γ Cas is very bright and highly saturates the CCDs, it is still possible to extract a reli-

able, high-quality light curve. Two different methods are viable. Since the TESS CCDs are charge conserving, an aperture mask that encloses all charge-containing pixels is one option. Alternatively, a light curve can be extracted from the PSF wings, excluding saturated pixels and columns (i.e. “halo photometry”). Both extraction methods were performed, and are further described in Appendix A. The resulting light curves are very similar in that they contain the same features, but the version extracted using all charge-containing pixels is of higher quality (i.e. higher signal-to-noise ratio (SNR), and less affected by systematics such as scattered light) and is adopted for the remainder of this work. Both versions of the light curve (LC) are compared in Appendix A.

The light curve is shown in the top panel of Fig. 1. In order to facilitate the extraction of periodic signals, each sector of data was detrended to remove low frequency signals with $f < 0.2 \text{ d}^{-1}$. The red curve shown in the upper panel of Fig. 1 represents these low frequency signals, which are subtracted to produce the detrended version of the light curve that is shown in the second panel of Fig. 1. This detrended version is used to calculate the amplitude spectra and periodic signals discussed throughout this work. Because data for each sector must be extracted separately, it is difficult to determine if trends with timescales similar to the sector duration (~ 25 days) are astrophysical or systematic in nature. This is discussed further in Sections 2.2 and 5.2 and Appendix A, especially in regards to the apparent brightening trend in Sector 18.

Within 20 arcmin from γ Cas, SIMBAD ([Wenger et al. 2000](#)) lists two stars with known magnitude brighter than 10 mag: the A5 star BD+59 148 ($V = 9.76$ mag, distance: 708") and the F3 star BD+59 158 ($V = 9.81$ mag, 738"). Both of these sources are sufficiently distant from γ Cas and the bloom columns caused by saturation that they do not contribute flux to the pixels in the aperture masks used for either version of light curve extraction. This was verified visually for all sectors.

4. Time-series analysis

A frequency analysis was performed for the entire set of TESS observations, and for each sector separately. The PERIOD04 package ([Lenz & Breger 2005](#)) was used, and the amplitude spectra are shown in Fig. 2 in black.

Because of the short TESS observing baseline, the window function includes significant side-lobes (Fig. 2, inset), which overlap when multiple signals exist at similar frequencies (as is the case with the frequency groups). This can cause spurious peaks in the periodogram with power comparable to real signals. Pre-whitening against each signal is a more reliable approach for determining the underlying frequencies relative to the Lomb-Scargle analysis without pre-whitening. However, some degree of spurious peaks is unavoidable given the nature of variability in γ Cas.

To determine the individual frequencies present in the data, the VARTOOLS light curve analysis software ([Hartman 2012](#)) with the LOMB-SCARGLE routine ([Zechmeister & Kürster 2009](#); [Press et al. 1992](#)) was used to detect and iteratively pre-whiten the data against each recovered frequency, and is also shown in Fig. 2 as vertical red lines (again for the full light curve and each sector separately). The frequency, phase, amplitude, SNR, false alarm probability (FAP) and group membership (when applicable) are printed in Table 2, with the phase being measured relative to the time of the first observation of the data analyzed (BJD = 2458764.69 for Sector 17 and the full light curve, 2458790.67 for Sector 18, and 2458955.80 for Sector 24).

² <https://mast.stsci.edu/>

³ <https://mast.stsci.edu/tesscut/>

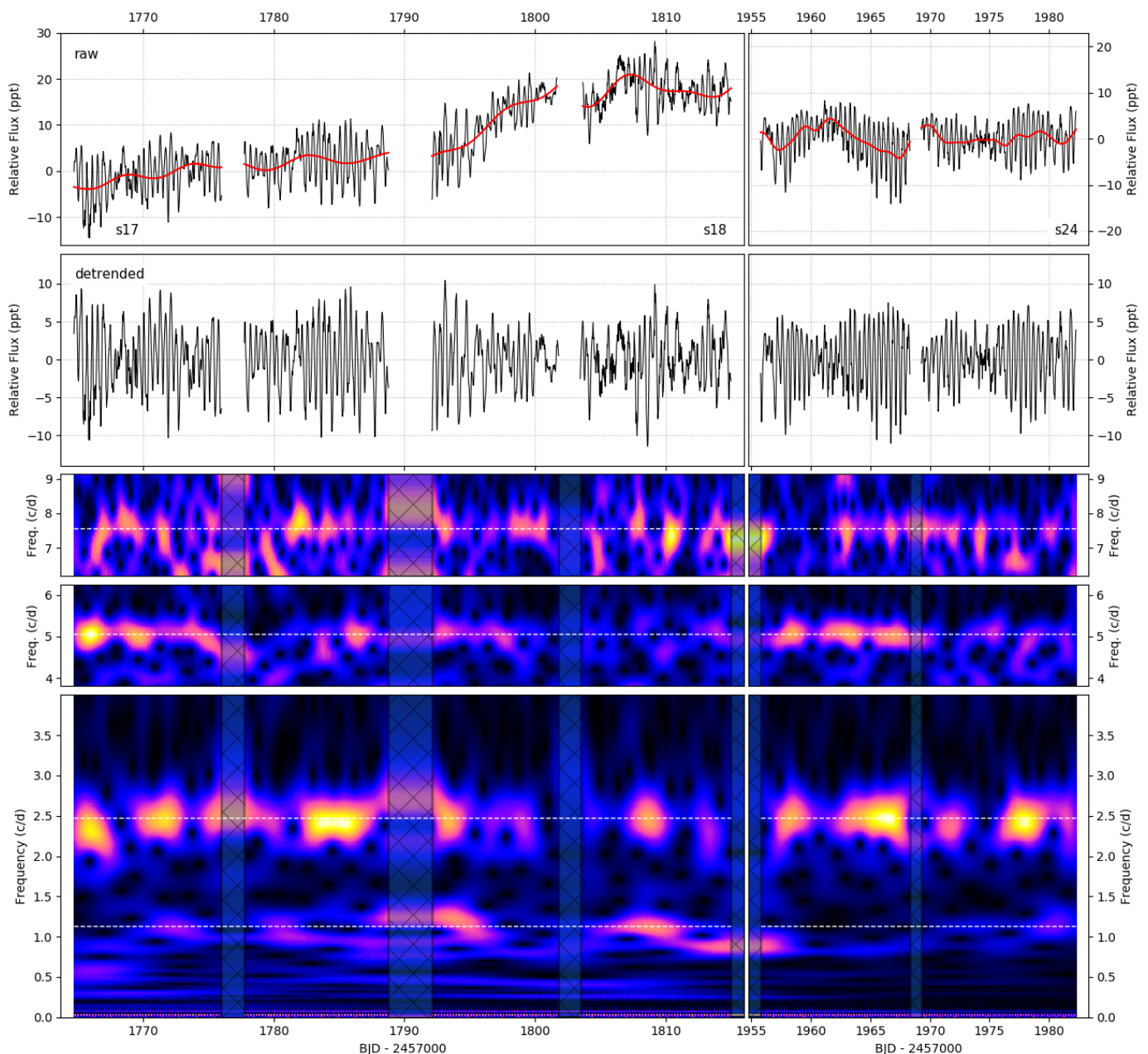


Fig. 1: *Top*: TESS light curve of γ Cas showing Sectors 17 and 18 (left) and 24 (right) in black, with low frequency trends traced in red. There is a 141 day gap between Sectors 18 and 24. Sector 18 data are vertically offset from their mean to appear continuous with Sector 17, while Sectors 17 and 24 have their mean value subtracted. *Second from top*: The light curve after removing low frequency trends with timescales greater than five days. The remaining panels show the wavelet analysis of the detrended light curve. Note that the color scale in the third, fourth, and fifth panels from the top are independent of each other, in order to see the relatively low amplitudes of the two higher frequency groups. However, the color scale is consistent across the full time baseline. Horizontal dashed lines mark the location of the strongest signal in each of the four groups. Hashed regions are gaps in the observations.

Both methods, with and without pre-whitening, are generally consistent in their identification of the dominant signals. Whenever specific values for frequency or amplitude are used in the following, they are from the pre-whitening analysis of the combined light curve extracted from all count-containing pixels unless otherwise stated. Formal error estimates are given for the frequency values, according to the method of [Montgomery & O'Donoghue \(1999\)](#), which assumes Gaussian uncorrelated noise. These, however, represent lower limits for the following reasons. All but one of the significant signals detected in each light curve exist in densely populated groups, where there is sig-

nificant overlap between the window function of adjacent signals, adding some degree of additional uncertainty in the values of the recovered frequency and amplitude. The variable amplitude of the groups further complicates this. In terms of error estimation, the frequency groups, although astrophysically real, can be considered as a form of correlated noise, meaning that error estimates computed analytically under the assumption of Gaussian uncorrelated noise will be too low. For these reasons, in general the most relevant quantities here are not necessarily the frequency and amplitude of specific frequencies, but more so the location, strength, width, structure, and variability of the groups

themselves. The most notable exceptions to this are the strongest signal at $f = 2.4796(1) \text{ d}^{-1}$, and the isolated high frequency signal at $f = 7.571(1) \text{ d}^{-1}$, which are introduced below.

4.1. Frequency groups

There are two main frequency groups. The first (group 1 = $g1$) is centered around 1.1 d^{-1} (the strongest signal being at $f = 1.1346(6) \text{ d}^{-1}$) and the second group, $g2$, is centered around 2.4 d^{-1} (with its strongest signal at $f = 2.4796(1) \text{ d}^{-1}$). A third group ($g3$) near 5.1 d^{-1} is also present (the strongest signal being at $f = 5.0559(5) \text{ d}^{-1}$), as is an isolated, single signal at $f = 7.571(1) \text{ d}^{-1}$ ($g4$)⁴. **These groups were identified visually from the amplitude spectrum, and are consistent with the dominant peaks identified through standard frequency analysis methods (i.e. those reported in Table 2). The center and width of these groups are estimated by eye, as there exists no standard method to measure these quantities.**

$g3$ appears much narrower than $g1$ and $g2$ (although this could be a matter of instrumental sensitivity), with a width of approximately 0.05 d^{-1} , compared to widths of $\sim 0.6 \text{ d}^{-1}$ for $g1$ and $\sim 0.9 \text{ d}^{-1}$ for $g2$. There are no obvious harmonic relationships between the strongest signals of these groups. $g2$ is centered around slightly more than twice the frequency of $g1$, and $g3$ is slightly higher than twice the frequency of $g2$. The signal at $7.571(1) \text{ d}^{-1}$ likewise is not obviously harmonically related to any other frequencies, but is $1.4975(2)$ times the frequency of the signal at $f = 5.0559(5) \text{ d}^{-1}$, and is very close to the sum of the strongest signals in $g2$ and $g3$, differing by $0.036(1) \text{ d}^{-1}$. It is however possible for more complex combination frequencies to manifest in the power spectrum of pulsators, including classical Be stars (e.g. Kurtz et al. 2015). Partly owing to a dearth of well-defined frequencies that stand out in $g1$ and $g2$, no such attempt was made to robustly test combination frequencies in the TESS data for γ Cas. There are no signals detected at frequencies higher than 7.6 d^{-1} ; with the 30-minute cadence, the Nyquist frequency is 24 d^{-1} .

In addition to the clearly dominant signal of $2.4796(1) \text{ d}^{-1}$, there are two other frequencies in $g2$ that seem to stand out, these being the second and third highest amplitude signals detected in the amplitude spectrum for the full light curve (see Table 2). While these signals are closely spaced, differing by $0.0581(4) \text{ d}^{-1}$, and are not totally resolved in the individual sectors, each sector has signals that appear to correspond to one or both of these frequencies (and they are also present in the sum and product of the amplitude spectra of all 3 sectors). These two signals are marked with short black vertical lines in Figure 2.

Because of the short observational baselines, and the fact that data reduction must be done separately for each sector, there is significant difficulty in measuring signals with periods greater than ~ 10 days in TESS data. Other studies find a low frequency group ($g0$) in a large fraction of Be stars, typically located around 0.05 d^{-1} (see Section 1), which can neither be confirmed nor ruled out in the present analysis of γ Cas. Likewise, variability associated with the orbital period of 203.55 d for γ Cas is inaccessible with TESS. **However, the overall brightening trends seen in Sectors 17 and 18 (Figure 1) may be real (see Sec. 5.2).**

⁴ Although only one signal is detected in this “group,” for the sake of consistency in nomenclature this is hereafter referred to as $g4$.

4.2. Group variability

The position of the groups does not vary significantly between Sectors 17, 18, and 24, but their strength and/or their composite frequencies do (with the exception of $g4$). The most notable aspects of this variation are the increase in strength of $g1$ from Sector 17 to 18, followed by a decrease between Sectors 18 and 24, and the decrease in strength of $g2$ from Sector 17 to Sector 18 followed by a return to near its original strength in Sector 24. The most significant signal in $g3$ (near 5 d^{-1}) decreases in amplitude by $\sim 40\%$ from Sector 17 to 18, and also increases back towards its original strength in Sector 24. The signal near 7.6 d^{-1} ($g4$) may decrease in amplitude slightly after Sector 17, but this is less certain and of a lower level compared to the variability of the other groups.

In an attempt to coarsely visualize where the variability does or does not appear coherent, the lower panel of Fig. 2 compares the product of the amplitude spectra of Sectors 17, 18, and 24 to their sum. The product emphasizes Lomb-Scargle features that are persistent in time, i.e., are strong at all times and do not significantly shift in frequency. This view of the amplitude spectrum illustrates a few aspects of the data. Especially in regards to $g1$ and $g2$, the densely populated groups and relatively wide window function lead to a situation where the amplitude spectrum within a group never approaches zero. In $g1$ there are no signals that clearly stand out above the “continuum” of the group. In $g2$, the three strongest signals are apparent in both the sum and product amplitude spectrum. Likewise, in $g3$ and $g4$, the structure appears the same in the sum and product versions, suggesting stability of the frequencies (but not necessarily the amplitudes) of these signals.

A wavelet analysis was performed to determine how the power of the detected frequencies varies with a higher temporal resolution compared to simply computing the power spectrum separately for the different sectors. The Python package SCALEOGRAM⁵ was used for this purpose. The wavelet analysis is shown in Figure 1. The variability in $g1$, $g2$, and $g3$ is apparent. However, the structure of the variable group power has some complexity. With many frequencies in $g2$, a complex beating pattern in the light curve can manifest in the wavelet plot as a variable group amplitude without a well defined period. The same logic may apply to the variable amplitude of $g1$, however there is an absence of any coherent dominant signals. The structure of $g3$ is relatively simple. In the amplitude spectrum of the full light curve, $g3$ is made up of two signals spaced by $0.0351(1) \text{ d}^{-1}$. The isolated signal at $f = 7.571(1) \text{ d}^{-1}$ is generally constant from sector to sector, but appears mildly variable in strength on shorter timescales. This may simply be an artifact owing to its low amplitude, or any even lower amplitude signals below the detection threshold in the vicinity.

4.3. Stochastic variability

In a study of 70 OB stars observed with TESS, each member of the sample exhibits a certain level of stochastic variability that manifests as red noise in their photometric amplitude spectra (Bowman et al. 2020). γ Cas is no exception to this rule. Figure 3 shows the amplitude spectrum of γ Cas on a log-log scale. The morphology of the amplitude spectrum carries information about the physical origin of the stochastic variation. Following the prescription of Bowman et al. (2019, 2020), in order to parameterize this signal for convenient comparison to recent models, a func-

⁵ <https://github.com/alsauve/scaleogram>

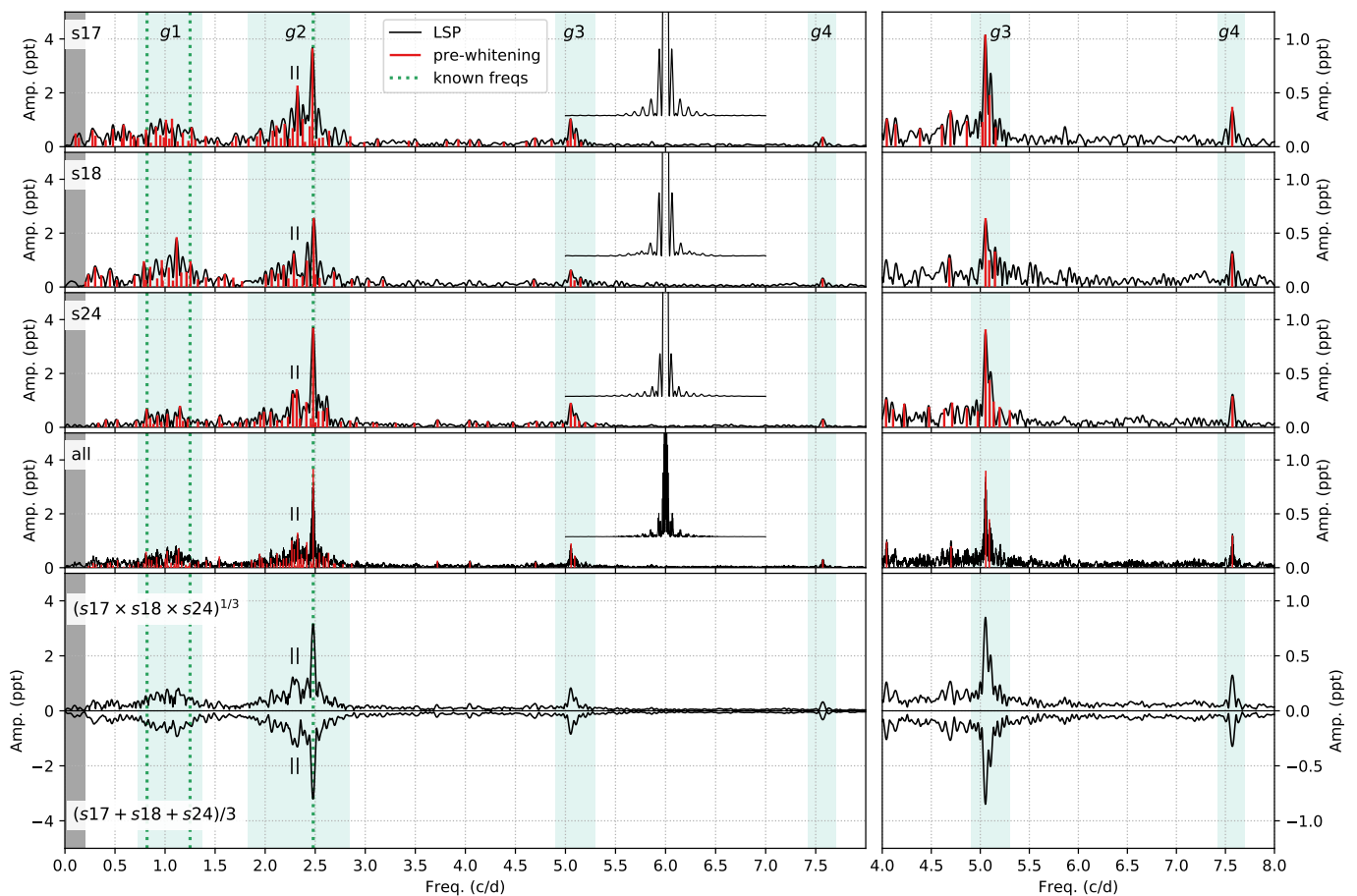


Fig. 2: A representation of the power spectrum computed from a classical Lomb-Scargle treatment (black) and through applying the Lomb-Scargle technique with iterative pre-whitening (red vertical lines). The dotted green vertical lines mark the historical frequencies at 0.82 d^{-1} , 1.25 d^{-1} , and 2.48 d^{-1} , and the two short vertical black lines mark the location of the second and third strongest signals in $g2$. The blue shaded regions indicate the frequency groups. From top to bottom, the panels show Sectors 17, 18, 24 and the full light curve and mean (with inverted amplitude) of the periodograms from Sectors 17, 18 and 24. The window function for each is centered at 6 d^{-1} , and with an arbitrary vertical scale. There are no signals detected beyond 8 d^{-1} . The grey bar from 0 to 0.2 d^{-1} identifies the region where low frequency trends were removed prior to the frequency analysis.

tional fit of the form (Bowman et al. 2020, their equation 2)

$$\alpha(\nu) = \frac{\alpha_0}{1 + \left(\frac{\nu}{\nu_{char}}\right)^\gamma} + C_w, \quad (1)$$

is applied, where $\alpha_0 = 0.136 \text{ ppt}$ is the amplitude at $\nu = 0 \text{ d}^{-1}$, $\gamma = 2.958$ is the logarithmic amplitude gradient, $\nu_{char} = 3.618 \text{ d}^{-1}$ is the characteristic frequency of stochastic variability, and $C_w = 0.012 \text{ ppt}$ is the constant white noise component. The above function with these values is shown as the solid red line in Figure 3. These values for these parameters are the result of a Markov chain Monte Carlo (MCMC) fit following the method of Bowman et al. (2020). The parameters derived for $\gamma \text{ Cas}$ are typical for the sample of Bowman et al. (2020), where it was determined that internal gravity waves excited by core convection are the most likely physical explanation for this feature given the values and ranges of α_0 , γ , and ν_{char} for the sample (Rogers et al. 2013; Edelman et al. 2019; Horst et al. 2020; Ratnasingham et al. 2020). The red noise characteristics of $\gamma \text{ Cas}$ also lend themselves to the same conclusion, since internal gravity waves are predicted to have values of $0.8 \leq \gamma \leq 3$, and still contribute power to the frequency spectrum even out towards 100 d^{-1} . Although Bowman et al. (2020) prefer the in-

ternal gravity wave explanation, it remains plausible that sub-surface convection zones can produce similar observables in OB stars (Lecoanet et al. 2019, although it seems difficult for sub-surface convection zones to produce an amplitude excess out to the observed relatively high frequencies). Furthermore, there are no classical Be stars among the 15 B dwarf stars in the Bowman et al. (2020) sample, and the mean $\nu \sin i$ value of the 15 B dwarfs is only 40 km s^{-1} (with a maximum of 162 km s^{-1}) – far lower than typical values of the near-critically rotating Be stars. It is therefore not a foregone conclusion that internal gravity waves are a ubiquitous feature of classical Be stars, as they appear to be for the more modestly rotating collection of Bowman et al. (2020).

5. Discussion

Besides the stochastic variability discussed in Section 4.3 and emphasized in Figure 3, the frequency groups $g1$ and $g2$ are the dominant features in the TESS light curve of $\gamma \text{ Cas}$. These complexes are much wider than the core of the window function (Fig. 2) and, therefore, unambiguously identify $\gamma \text{ Cas}$ as a multi-mode nonradial pulsator (since it is not plausible that all of the

Table 2: Strongest frequencies detected. Up to the five strongest signals (by amplitude) for each group are listed here for each sector, and also the full baseline. The SNR is calculated in the standard way in the `VARTOOLS` package by comparing the Lomb-Scargle power of a given peak to the mean value of the periodogram after applying iterative 5-sigma clipping. The logarithm of the formal false alarm probability (FAP) is also shown. The information in this table is from iterative pre-whitening of the light curve extracted from all count-containing pixels, and the amplitudes are lower by about $\sim 10\text{-}15\%$ compared to those found using halo photometry. Formal error estimates for the frequency determined according to [Montgomery & O’Donoghue \(1999\)](#) are given in braces in units of the last significant digit. However, these should be understood as lower limits (see Section 4). Errors are not provided for amplitude or phase, because the variability of the signals makes such determinations difficult and somewhat arbitrary.

Group	Freq. (d^{-1})	Amp. (ppt)	Phase	SNR	log(FAP)	Group	Freq. (d^{-1})	Amp. (ppt)	Phase	SNR	log(FAP)
Sector 17						Sector 24					
g1	1.069(7)	1.04	-0.037	329.2	-15.8	g1	1.148(8)	0.80	-0.006	354.0	-19.4
g1	1.008(7)	1.00	-0.114	344.2	-13.0	g1	0.816(9)	0.69	-0.085	265.3	-16.9
g1	0.585(9)	0.82	-0.337	189.5	-10.5	g1	1.02(1)	0.50	-0.269	114.6	-11.6
g1	0.90(1)	0.74	-0.189	152.5	-10.2	g1	0.92(1)	0.45	0.163	99.9	-10.5
g1	1.26(1)	0.72	-0.465	147.0	-10.2	g1	1.11(1)	0.41	-0.382	81.2	-10.2
g2	2.472(2)	3.65	0.129	5224.6	-85.8	g2	2.479(1)	3.69	0.176	7640.2	-134.1
g2	2.323(3)	2.27	-0.082	1934.1	-52.5	g2	2.314(4)	1.42	0.305	1134.1	-38.9
g2	2.375(7)	1.03	0.348	355.1	-12.8	g2	2.277(5)	1.25	0.024	920.6	-35.3
g2	2.194(9)	0.85	0.324	226.4	-10.8	g2	2.411(6)	0.94	-0.067	515.3	-22.2
g2	2.113(9)	0.79	-0.499	176.8	-10.2	g2	2.619(9)	0.73	0.329	285.2	-17.3
g3	5.051(7)	1.04	0.124	325.1	-12.1	g3	5.053(7)	0.91	-0.133	476.7	-23.1
g3	5.09(1)	0.48	0.052	53.9	-7.5	g3	5.09(1)	0.44	0.283	89.9	-10.3
g3	4.86(3)	0.24	-0.449	13.5	-4.3	g3	5.13(2)	0.24	-0.385	24.5	-5.4
g3	5.02(3)	0.23	0.355	12.5	-3.8	g3	5.19(3)	0.19	0.193	15.6	-4.1
g3	5.15(4)	0.18	0.243	10.4	-2.5	g3	4.86(3)	0.18	0.443	14.5	-3.9
g4	7.56(2)	0.37	-0.028	26.6	-5.6	g4	7.57(2)	0.29	-0.343	36.1	-5.9
Sector 18						All Sectors					
g1	1.115(4)	1.85	0.125	1309.9	-38.1	g1	1.1346(6)	0.71	0.245	572.6	-21.8
g1	0.967(8)	1.00	-0.179	274.1	-13.5	g1	1.0206(7)	0.62	0.133	709.6	-25.5
g1	1.253(8)	0.96	0.241	242.2	-14.7	g1	0.8099(8)	0.59	-0.350	373.0	-16.1
g1	0.788(8)	0.96	0.487	239.7	-16.2	g1	1.111(1)	0.46	-0.126	913.0	-29.1
g1	0.85(1)	0.75	0.468	126.6	-10.9	g1	0.916(1)	0.40	-0.443	476.3	-19.2
g2	2.485(3)	2.56	-0.326	2176.9	-54.9	g2	2.4796(1)	3.67	-0.218	13244.3	-256.9
g2	2.286(6)	1.24	0.066	498.6	-19.6	g2	2.3244(3)	1.30	-0.400	2356.9	-68.0
g2	2.417(8)	0.98	0.117	260.5	-14.2	g2	2.2663(4)	1.01	0.442	1289.5	-40.7
g2	2.18(1)	0.80	0.002	160.8	-11.6	g2	2.4161(5)	0.95	-0.483	487.1	-19.0
g2	2.06(1)	0.64	0.009	99.6	-9.4	g2	2.2902(7)	0.69	0.255	476.6	-19.9
g3	5.05(1)	0.64	0.235	100.0	-10.0	g3	5.0559(5)	0.90	-0.382	934.0	-28.9
g3	5.14(2)	0.33	-0.175	17.2	-4.7	g3	5.091(1)	0.45	0.319	269.8	-14.1
g3	5.09(3)	0.25	-0.477	12.1	-3.2	g4	7.571(1)	0.30	-0.442	103.4	-8.1
g4	7.56(2)	0.31	-0.381	16.7	-4.5						

periodic photometric signals are circumstellar or directly related to rotation considering the timescales and lack of exact harmonics). The visualisations of the variability as two sets of many individual frequencies (Fig. 2) with strong mutual beat patterns in light curves (Fig. 1, top panel) and as wavelet transforms of four frequency ranges with strong amplitude variations (Fig. 1, bottom panels) are complementary presentations of the same behavior ([Rivinius et al. 2016](#)). The considerable variability in the total power of each frequency group revealed by Fig. 1 (bottom panels) is matched by changes in the appearance of the light curve (top panels). Because this activity does not seem to be periodic (although a timescale of ~ 5 d may be indicated for g2), more than two frequencies must be involved, provided that the frequencies are constant.

Considering the wavelet analysis in Figure 1, the variations in power of the groups are not globally correlated. Although g3 and g4 appear at first glance to be qualitatively different from

g1 and g2, the former pair being much narrower and relatively simple, this could just be a matter of reduced photometric amplitude with increasing frequency, and the noise floor of the data. Although g3 only has two confidently detected frequencies in the framework of the amplitude spectrum of the full light curve, its variability seen in the wavelet analysis of Figure 1 suggests a higher degree of complexity. If g3 only contained these two frequencies, a beat period of 28.5 days is expected. While this seems to be approximately realized in the TESS data (g3 is stronger in the first half of each ~ 27 day-long sector, and weaker in the second), g3 also appears to be variable on shorter timescales, which could be an artifact of its somewhat low amplitude or intrinsic variability in the amplitudes of one or both main frequencies, or it could reflect the presence of additional nearby frequencies with low amplitudes, analogous to the structure of g2. Figure 3 hints at the latter, where there seems to be structure above the Fourier “continuum” in the vicinity of g3 that

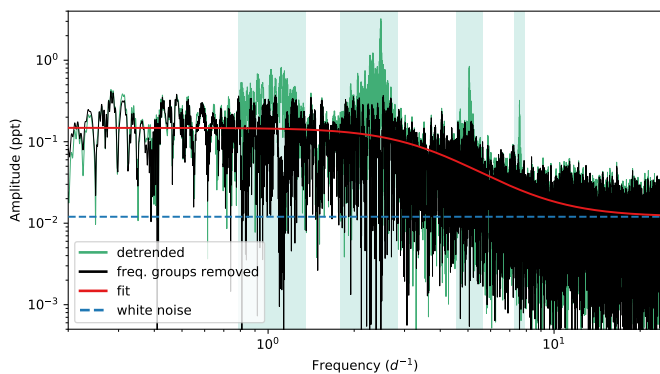


Fig. 3: Amplitude spectrum of γ Cas. The green curve is identical to what is plotted in Figure 2 for the combined light curve, but on a log-log scale. The black curve is computed in the same way, but after pre-whitening against the signals in the frequency groups, which is then fit with Equation 1 (solid red line). The white noise floor is marked by a horizontal dashed line.

extends beyond the two frequencies identified in Figure 2 and Table 2. Comparative conjectures concerning g_4 are even more difficult, again owing to its low amplitude. Despite this, it is reasonable to claim that g_4 is located at approximately three times the frequency of the strongest signal in g_2 (and about 1.5 times the frequency of the strongest signal in g_3), that g_4 does not appreciably vary in frequency or amplitude from sector to sector, and that there does not seem to be any further structure besides a single peak in the vicinity of g_4 . **Doesn't this single peak CONSTITUTE g_4 so that it can't be in its vicinity?** above the noise level in Figure 3.

5.1. Stochastic variation, internal gravity waves, angular momentum transport, mode excitation, and Rossby waves

Especially since internal gravity waves excited by core convection in differentially rotating massive stars are predicted to be efficient at transporting angular momentum from the core outwards (Aerts et al. 2019; Lee & Saio 2020), this is an important topic to consider in Be stars, whose envelopes are somehow made to spin rapidly. If, as seems likely for many other OB stars, a spectrum of internal gravity waves is the origin of the bulk of the stochastic variability in γ Cas (Section 4.3), this can aid in transporting angular momentum to the envelope, which would otherwise spin down as the star evolves and the envelope expands (and loses angular momentum to winds and mainly to the disk in the case of Be stars). If angular momentum is transported to the outer layers of an already rapidly rotating star, then outbursts may be a way to remove this excess angular momentum, thus allowing the star to avoid super-critical rotation (Krtićka et al. 2011; Georgy et al. 2013; Rímulo et al. 2018; Baade & Rivinius 2020).

A complication in the picture of the amplitude spectrum of γ Cas (and the majority of all early-type Be stars) is the presence of periodic signals in the standard g mode regime (namely, g_1 and g_2). However, this delineation is blurred by rapid rotation. With a spectral type of B0.5 IVe, γ Cas is too hot for the κ mechanism to drive g modes in the standard view of low frequency pulsation in SPB stars ($f \lesssim 4 \text{ d}^{-1}$), yet the bulk of its periodic signals lie in this regime. Global Rossby waves (r modes) are expected and observed in moderately to rapidly rotating stars

(Van Reeth et al. 2016; Saio et al. 2018b), which tend to form frequency groups just below the rotation frequency (for $m = 1$) and/or just below twice the rotation frequency (for $m = 2$). In all the examples of Saio et al. (2018b), including one Be star, the $m = 1$ group is both predicted and observed to be significantly stronger than the $m = 2$ group. In the case of γ Cas, g_2 is stronger than g_1 (or even in the most conservative estimates they are of similar strength if the strongest signals in g_2 are discounted), suggesting that g_1 and g_2 are not simply the manifestations of two groups of global r modes of $m = 1$ and $m = 2$. This bears resemblance to the Be star analyzed in Saio et al. (2018b), KIC 6954726, which has a first frequency group centered near 0.9 d^{-1} that is consistent with r modes of $m = 1$, and a second group centered near 1.7 d^{-1} (and of similar strength to the first group) that is inconsistent with $m = 2$ r modes (both in location and relative strength). As discussed in Rivinius et al. (2016), this star was undergoing a quasi-continuous series of small outbursts at the time of the Kepler observations so that circumstellar activity likely contributes to aspects of the amplitude spectrum. r modes are necessarily retrograde in the co-rotating frame of the star, and thus do not positively contribute to the outward angular momentum transport (and in fact can slightly decrease the angular momentum in near-surface layers).

It is possible that low-frequency g modes are excited by resonant coupling with internal gravity waves excited by core convection (Lee & Saio 2020). The role of observable periodic signals excited in this way were explored for the Be star HD 51452 (B0 IVe), observed with the CoRoT satellite (Neiner et al. 2012). Like other early-type Be stars, the most prominent periodic signals are at frequencies between $0.5 - 3 \text{ d}^{-1}$, and are inconsistent with rotation and p-mode oscillations. The proposed origin of these signals are stochastic gravito-inertial modes that are excited by core convection and modified by the Coriolis acceleration, in addition to possible r-modes driven by the Coriolis acceleration. HD 51452 is also mentioned in Saio et al. (2018b), where the authors suggest odd and even r-modes of $m = 1$ as sufficient to explain the observed frequency groups without the need to invoke internal gravity waves driven by core convection as an excitation mechanism.

A recent study of the Be star HD 49330 (B0.5 IVe) by Neiner et al. (2020) demonstrates all the salient points of this section. HD 49330 has similarities to γ Cas, being of the same spectral type and having frequencies in both the g and p mode regimes, although its disk is far weaker and less persistent compared to γ Cas. In an effort to understand the observed amplitude spectrum of HD 49330 and its correlations with outbursts observed by CoRoT (Huat et al. 2009; Floquet et al. 2009), Neiner et al. (2020) modeled various aspects of the system and found that stochastically excited internal gravity waves act to transport angular momentum to the surface layers, which then become destabilized and oscillate in stochastically driven g modes, whereupon outbursts can be triggered. Neiner et al. (2020) conclude that the κ mechanism drives the observed p modes, but cannot drive the observed g modes. Instead, the g modes are excited by stochastic internal gravity waves.

The stochastic low frequency excess observed in the amplitude spectrum of γ Cas likely reflects the presence of internal gravity waves driven at the inner boundary of the radiative zone. This spectrum of internal gravity waves can excite g mode pulsation similar to the case of HD 49330, which can explain the presence of g_1 and g_2 in γ Cas. At the same time, r modes may (and probably do) exist which can also contribute to the observed frequency groups. Circumstellar

activity may also cause photometric variability in the vicinity of g_1 and g_2 . The κ mechanism is likely the driving force behind the higher frequency signals in g_3 and g_4 (under the assumption they are p modes). Given that the disk of γ Cas was growing at the time of the TESS observations, it is possible that all three of these processes (stochastically driven g modes, r modes, and circumstellar activity) are contributing to g_1 and g_2 . Detailed modeling and spectroscopic identification of the line profile variability associated with these frequencies is needed to determine the physical processes responsible for, and their relative contribution to, the observed amplitude spectrum of γ Cas.

5.2. Mass ejection and comparison to other early-type Be stars

The signals recovered in the TESS data of γ Cas are perfectly ordinary compared to those found in large samples of classical Be stars (Labadie-Bartz & Carciofi 2020; Balona & Ouzar 2020). There are a number of different types of variability seen in the brightness of Be stars, including frequency groups as well as individual isolated frequencies, stochastic variability, and longer timescale (a few days and longer) changes in the mean brightness. In some Be stars monitored with the BRITe-Constellation satellites, mean brightness variations by up to a few per cent and on timescales of weeks to months have been observed at times when the amplitude of g_1 modes was temporarily increased. In some instances, the growth in amplitude appeared larger, and was more peaked in time, than would follow from the mere temporary agreement in phase (beating) of frequencies and can be due to nonlinear amplification (Baade et al. 2016, 2018a; Baade & Rivinius 2020). The proposed explanation of the variable brightness (Haubois et al. 2012; Ghoreyshi et al. 2018) is in terms of discrete mass-loss events that are driven by the nonlinear amplitude superposition of several NRP modes and lead to an increased continuum emission by the ejecta. However, if the matter is ejected into the line of sight, the total brightness can be reduced.

In spite of the - in comparison to BRITe and SMEI (e.g. Borre et al. 2020) - much shorter time baseline of less than a month (mostly one TESS sector), about one-quarter of early-type Be stars observed by TESS (B0 – B3) show variability in their mean brightness on timescales of a few days or longer and with amplitudes typically of a few percent. TESS data for four early-type Be stars are shown in Appendix B to illustrate this point and serve as a comparison to γ Cas. In most, **but not all**, cases of days-long net brightening events, they are accompanied by increased amplitudes of one or more of the main frequency groups (mostly g_1 or g_2). By analogy to the much slower and often higher-amplitude events that are well understood to trace the build up of the circumstellar disk (e.g. Baade et al. 2016, 2018a; Labadie-Bartz et al. 2018), these more rapid changes in mean brightness are likely the result of varying amounts of material being lifted above the photosphere. This leads to the notion that, as the result of the temporary phase-coherent combination of multiple NRP modes, active Be stars can quasi-permanently (when averaged over months or years) eject matter that can be picked up by viscosity to build a disk. The process may be stochastic as already discussed by Kurtz et al. (2015).

The TESS light curve of γ Cas does not clearly invite for a similar conclusion because the variations in mean brightness do not include clearly defined extrema (the mean brightness may also be affected by the signal and background extraction). Accordingly, the time intervals of temporary in-phase superposi-

tion of multiple NRP modes that stand out as bright blobs in the wavelet transform but are also visible in the light curve (see bottom and top panels, respectively, of Fig. 1) do not clearly correlate with changes in the mean brightness.

The lack of such a correlation neither invalidates the interpretation given above of the cases presented in Appendix B nor is it expected that the correlation is seen in TESS data of a given Be star at all times or in all Be stars. In fact, the saturation effect described in Sect. 2.2 even implies that in stars with a very dense inner disk small mass-ejection events may become photometrically very insignificant. At the time of the TESS observations, the disk of γ Cas was clearly very strongly developed. Furthermore, there can also be extended time intervals with significant mass loss but so small changes in its rate that the light curve is smooth over the duration of a single TESS sector (Labadie-Bartz et al. 2017; Rímulo et al. 2018). Any superimposed discrete mass-loss events may also be so separated in time that a single TESS sector does not capture one of them. Nevertheless, it is well possible that the longer term increase in brightness seen in Sectors 17 and 18 reflects enhanced mass loss rates over this time period. However, this is more ambiguous than the cases discussed in Appendix B, where the evidence for brief mass ejection events is less hampered by a strong disk that has been growing for decades.

5.3. Historical and new photometric frequencies

There is no clear indication in TESS Sectors 17, 18, or 24 of the 1.215811 ± 0.000030 d period ($0.82250(2)$ d⁻¹ frequency) found by Henry & Smith (2012) with an initial amplitude of ~ 5 -7 ppt and confirmed by Borre et al. (2020) to have faded and eventually dropped below detectability. In the combined TESS data, the closest signal appears at $0.8099(8)$ d⁻¹ and is the third strongest signal in g_1 with an amplitude of 0.59 ppt. Formally, the 0.82 d⁻¹ frequency has not, therefore, returned although, in view of the challenges discussed above of accurately and consistently measuring a frequency in a highly variable frequency group, the uncertainty may be larger than the numbers suggest. Smith et al. (2016) do not identify the physical property that is supposedly rotationally modulated with 0.82 d⁻¹, and they do not explain the phase coherence reported by Smith et al. (2006) which is not an obvious property of weak, stochastically generated magnetic structures. Therefore, there is no reason to pick a convenient frequency in g_1 and call it the stellar rotation frequency.

As Borre et al. (2020) reported, the 0.82 d⁻¹ frequency seems to have given way to a newly developing variability with frequency $2.47936(2)$ d⁻¹ (which falls into g_2) and time-dependent amplitudes between 1.5 and 4.5 mmag (ranging between about 1 – 3 mmag in the red filter of BRITe and 3 – 5 mmag in the blue filter). This amplitude difference considering the red and blue filters is expected for pulsation in hot stars, as photometric amplitudes are higher at shorter wavelengths. TESS found the latter of these signals still present in all sectors and at $2.4796(1)$ d⁻¹ in their combination. In agreement with Borre et al. (2020) and the group behavior described above, the amplitude was variable between 2.6 and 3.7 ppt but was at all times the largest of all individual signals (Table 2). Borre et al. (2020) determined that the 0.82 d⁻¹ and 2.48 d⁻¹ frequencies are not 1:3 harmonics, having a conservatively estimated ratio of 3.0158(1). The TESS value for the latter frequency is in agreement with this conclusion. The 1.25 d⁻¹ variability tentatively identified by Borre et al. (2020) is not confirmed by TESS (see Fig. 2). The detection was de-

clared tentative because the feature appeared surrounded by others in the power spectrum. In this region, TESS now found group $g1$. The strongest signal in $g3$, $5.0559(5) \text{ d}^{-1}$, seen by TESS is also apparent in the blue-filter BRITE data at a similar amplitude (about 1 ppt, Borre et al. 2020). But, owing to its low SNR and proximity to an integer multiple of 1 d^{-1} , the signal could not be unambiguously attributed to $\gamma \text{ Cas}$. Since TESS does not suffer from daily aliases, this problem is avoided and the 5.06 d^{-1} signal tentatively reported in Borre et al. (2020) is confirmed.

Frequencies persistently present during the TESS observations were the strongest feature in $g2$ at $2.4796(1) \text{ d}^{-1}$ (and, more tentatively, at $2.3244(3)$ and $2.2663(4) \text{ d}^{-1}$) and the two strongest ones in $g3$ at $5.0559(5)$ and $5.091(1) \text{ d}^{-1}$ as well as the seemingly isolated frequency at $7.571(1) \text{ d}^{-1}$ (see Table 2 and Fig. 2). Of these variabilities, the last one had the most constant amplitude.

Frequency group $g1$, which in $\gamma \text{ Cas}$ includes the 0.82 and 1.25 d^{-1} frequencies, is, in other Be stars, near its lower limit of ten home to the Štefl frequencies (Sect. 2.1) that are thought to trace activity in the innermost disk. In the latter, only in Sector 18 a feature at $1.115(4) \text{ d}^{-1}$ stands out above the remainder of $g1$ (Table 2). The apparent lack of Štefl frequencies in photometry, however, does not exclude ongoing star-to-disk mass transfer. Because Štefl frequencies may arise in newly ejected matter not yet in circularized orbits and/or not yet homogeneously distributed in azimuth, the indicated high inner-disk density could accelerate this process and reduce its amplitude. Frequent small events would further equalize the matter density in azimuth and circularize the orbits more quickly. **The photometric signature of Štefl frequencies is also more likely to manifest in systems with higher inclination angles, whereas the intermediate inclination angle of $\gamma \text{ Cas}$ ($\sim 42^\circ$, Stee et al. 2012) can be a hindrance to their detection. Furthermore, such circumstellar signals could exist among $g1$ and/or $g2$, but their identification as such would require spectroscopic confirmation.**

Yang et al. (1988) reported periods between 7000 and 10000 s for the traveling subfeatures in spectral lines (high-order NRP modes). The corresponding frequency range from 8.6 to 12.3 d^{-1} in the TESS amplitude spectra is devoid of significant features, indicating long-term amplitude variations or cancellation of high-spatial-frequency signals in integral-light data.

6. Conclusions

The presence of frequency groups proves that $\gamma \text{ Cas}$ pulsates in low-order NRP modes because frequency groups have been found and attributed to low-order NRP in many Be stars, in $\beta \text{ Cep}$ and SPB stars, and even outside the B-star domain in $\gamma \text{ Dor}$ stars (cf. Introduction). **Another commonality suggested by the TESS observations is the involvement of NRPs in several discrete mass-loss events within a month in some Be stars (Appendix B). At the time of the TESS observations, the strongly developed disk of $\gamma \text{ Cas}$ probably diluted the photometric evidence of individual events while the mean star-to-disk mass-transfer rate must have been high to let the disk grow even further.** Considering all other available observed properties, these findings reduce to a minimum the qualitative difference between $\gamma \text{ Cas}$ and the class of classical Be stars as a whole. This concerns the properties of central stars and circumstellar disks alike as well as the physical processes governing them.

The establishment of low-order NRP also reinforces the spectroscopic identifications of higher-order NRP (Yang et al.

1988) that have also been seen in other Be (Vogt & Penrod 1983; Kambe et al. 1997) and non-emission-line B stars (Smith 1985). It is, therefore, very difficult to instead imagine undetectable magnetic fields producing azimuthally roughly equidistant super-photospheric cloudlets (Smith et al. 2016). Even more challenging is it to anchor anything in a stellar atmosphere such that it does not show detectable phase wobble. If the principle is that same objects require same explanations, $\gamma \text{ Cas}$ is to be explained by what explains other Be stars. Since most other Be stars do not require an explanation of hard X-rays, because they do not emit them, and there is nothing in the standard toolbox for single Be stars suggesting that X-rays could arise anyway, the X-ray properties of $\gamma \text{ Cas}$ need to be explained by something that is not needed to understand the basics of Be stars. A good candidate is the presence of helium-star companions (Langer et al. 2020, and references therein) that are tracers of an important formation channel of Be stars.

The picture conveyed by Appendix B is that, in their equatorial regions, some Be stars are continuously bubbling like some hot springs on Earth. The part made visible by TESS goes down to small events of up to a week (very few stellar rotations) in duration. In addition, there can be sometimes cyclically repeating major events and a putative floor of activity powered by high-order NRPs and turbulence. The relative contributions to the total mass loss to the disk are unknown. In $\gamma \text{ Cas}$, the star-to-disk mass-transfer rate seems to have increased in recent years because the profile of the emission in $H\alpha$ has slowly grown in EW and E/C textcolorblueDBA: The following has not been mentioned (correctly so, I think) before: has changed from flat-topped to peaked, indicating an overall growth in disk mass and an increased density in the outer disk.

The 2.48 d^{-1} and 5.06 d^{-1} signals have probably persisted from 2015 (Borre et al. 2020) through 2020 (TESS). The 0.82 d^{-1} frequency found between 1997 and 2011 by Henry & Smith (2012) has not returned in 2019/2020. It falls into $g1$ which exhibited amplitude variability over the TESS timeline. Nevertheless, at $\sim 6.5 \text{ mmag}$, the initial amplitude of the 0.82 c/d variability was large. This frequency seems too high for the Štefl frequency of $\gamma \text{ Cas}$ which is at the extreme high end of possible stellar rotational frequencies (Henry & Smith 2012). Like 2.48 d^{-1} , it is likely just one of several frequencies in its parental group, and there is no reason to single it out for specific interpretative purposes. The two magnetic models for Be stars zoom into just one frequency and, therefore, are not likely to capture the full picture. Most notably, they do not seem to offer provisions for the (nonlinear) coupling of several frequencies to initiate mass-loss events. The case of $\pi \text{ Aqr}$ (Nazé et al. 2020) may show that $\gamma \text{ Cas}$ -like stars are not exempt from this. 0.82 d^{-1} and 2.48 d^{-1} are confirmed by Borre et al. (2020) to be not obviously numerically related despite being nearly at a 1:3 ratio.

The lack of phase coherent variability in $g1$ seems in agreement with the nondetection of spectroscopic signatures of low-order NRP modes in $\gamma \text{ Cas}$. On the other hand, the yearslong presence at high amplitude of the 0.82 c/d frequency in $g1$ indicates that the nature of $g1$ may be more mixed than it appeared at the time of the TESS observations.

The amplitude spectrum of $\gamma \text{ Cas}$ contains frequencies well above the conventional g -mode domain. This includes $g3$ near 5.1 d^{-1} and the seemingly solitary feature at 7.57 c/d . The latter should be outside the domain of rotationally split low-order g -modes. Because $\gamma \text{ Cas}$ is close to the hot limit of the $\beta \text{ Cephei}$ instability strip, it may be a hybrid $\beta \text{ Cep/Be(SP)}$ pulsator (Moździerski et al. 2019). This property is shared by about one-third of all Be stars in the $\beta \text{ Cephei}$ domain (Balona & Ozuyar

2020). Like other early-type Be stars with pulsation in the traditional g -mode domain, it remains to be explained what mechanism(s) act to drive these modes. Excitement by internal gravity waves is one attractive possibility (Neiner et al. 2020). Angular-momentum transport by gravity waves may aggravate the possible surface-angular-momentum crisis of Be stars (Krtićka et al. 2011; Rímulo et al. 2018). Mass loss driven by NRP would avoid this problem, so that NRP modes might couple such as to enable mass loss (Baade & Rivinius 2020). **r modes may also contribute to these lower frequency groups.**

Acknowledgements. This paper includes data collected by the TESS mission, which are publicly available from the Mikulski Archive for Space Telescopes (MAST) and at the Space Telescope Science Institute (STScI). STScI is operated by the Association of Universities for Research in Astronomy, Inc., under NASA contract NAS 5–26555. Funding for the TESS mission is provided by NASA’s Science Mission directorate. This research has made use of NASA’s Astrophysics Data System (ADS, Kurtz et al. 2000), the SIMBAD database (Wenger et al. 2000), operated at CDS, Strasbourg, France and the BeSS database, operated at LESIA, Observatoire de Meudon, France: <http://basebe.obspm.fr>. J.L.-B. acknowledges support from FAPESP (grant 2017/23731-1). A.C.C. acknowledges support from CNPq (grant 307594/2015-7) and FAPESP (grant 2018/04055-8). Funding for the Stellar Astrophysics Centre is provided by The Danish National Research Foundation (Grant agreement no.: DNR106). This research made use of Astropy,⁶ a community-developed core Python package for Astronomy (Astropy Collaboration et al. 2013, 2018). This work makes use of observations from the LCOGT network.

⁶ <http://www.astropy.org>

Appendix A: Light curve extraction from TESS images

At an I -band magnitude around 2.4, γ Cas heavily saturates the TESS detectors. However, since primarily the core of the PSF and bloom columns are affected, valid brightness measurements can be extracted from the non-saturated pixels in the PSF wings (*i.e.* halo photometry). Alternatively, a much larger aperture mask can be used if it includes all charge-containing pixels. The TESS CCDs are designed to conserve charge even for highly saturated objects. That is, excess charges from saturated pixels flow to neighboring unsaturated pixels along the column and can be collected and measured from them. Tests carried out prior to launch demonstrated this for stars at least as bright as 4th magnitude in the TESS band (according to the TESS instrument handbook v0.1⁷). Using an aperture mask that includes all pixels that collect charge from the incident flux of a very bright star (*e.g.* γ Cas) is therefore a valid method for extracting a light curve provided that the brightness limit at which charge is no longer conserved does not significantly interfere with the astrophysical signals.

Light curves were extracted using both of these methods and compared. The aperture masks used are shown in Figures A.1 and A.2 for the methods using all charge-containing pixels and only including non-saturated halo pixels, respectively. The resulting light curves are compared in Figure A.3, along with their respective power spectra, computed with the `TIME-SERIES.LOMBSCARGLE` package (VanderPlas et al. 2012; VanderPlas & Ivezić 2015) of `ASTROPY` (Astropy Collaboration et al. 2013, 2018). The properties of these light curves are very similar, with the main differences being that halo photometry results in a lower SNR and an increase in apparent low frequency trends which are likely due to systematic effects. After removing linear and low frequency trends (with $f \leq 0.2 \text{ d}^{-1}$), the frequency spectra of the two versions of the data are essentially identical, in that the same signals are detected in both but with slightly higher amplitudes in the halo photometry (typically 15%). This amplitude suppression is most pronounced for γ Cas in Sector 24, and may be related to the longer central bloom column (and/or the higher number of saturated pixels) compared to Sectors 17 and 18. However, the SNR of each photometric data point and also the spectroscopic SNR of the periodogram peaks are at least $2\times$ greater for the LC extracted using all charge-containing pixels. Both light curve extraction methods were performed for other variable stars of similar brightness as γ Cas, and in all cases the same signals are recovered with both methods, with higher SNR resulting from including all charge-containing pixels and a similar mild suppression of variability amplitude, empirically supporting the validity of the methods used for γ Cas in this work, with the caveat that reported amplitudes are suppressed by $\sim 10 - 15\%$ (and perhaps slightly higher for data from Sector 24).

Appendix B: Mass-loss indicators in TESS observations of other early-type Be stars

The following subsections show and discuss sample light curves for four early-type Be stars which illustrate variability patterns representative of the types of photometric signals seen in Be stars with TESS (Labadie-Bartz & Carciofi 2020). These light curves were extracted using methods similar to that for γ Cas (but without the complications of heavy saturation) and preserve the slow

⁷ https://archive.stsci.edu/missions/tess/doc/TESS_Instrument_Handbook_v0.1.pdf

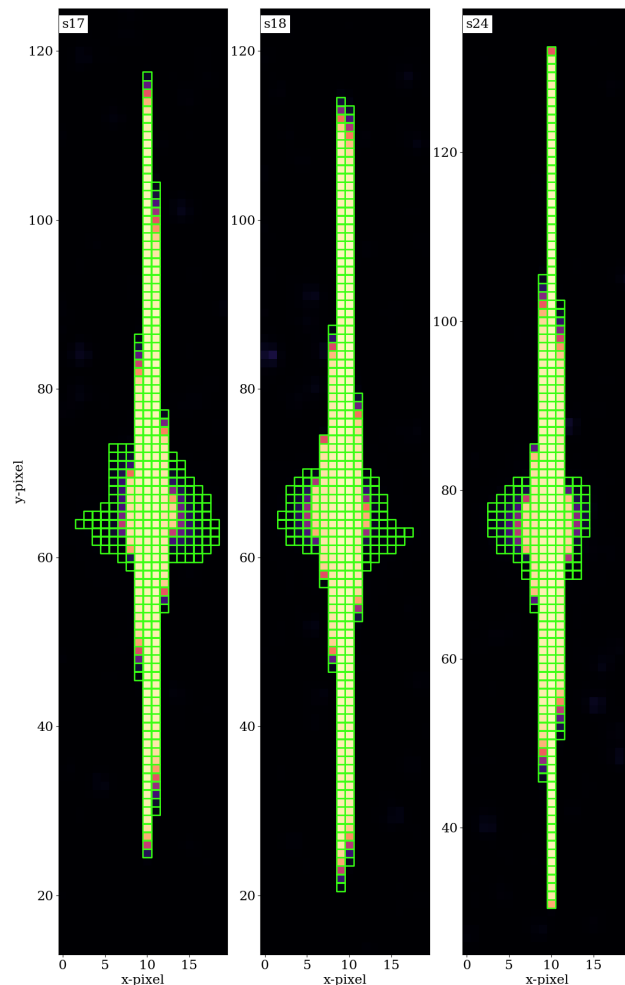


Fig. A.1: TESS “postage stamp” showing the region of the sky around γ Cas for Sectors 17, 18, and 24. Pixels used to extract the light curve are marked in green. Pixels with counts greater than approximately five times the background level are used.

variability that illustrates that changes in the mean brightness and times of in-phase superposition of variabilities with several frequencies in g_1 or g_2 are correlated. Because the time intervals concerned can be as long as $\sim 5 \text{ d}$ and several of them can occur in a single TESS sector of $\sim 27 \text{ d}$, the identification of such simultaneities is necessarily subjective.

Globally, there is no doubt that such a correlation exists, especially since qualitatively identical, probably cyclic correlations have been found on larger timescales and at much higher amplitudes (Baade et al. 2017, 2018a). Only its prevalence cannot be quantified on the basis of the data used. As explained in Sect. 5, a change in mean magnitude can be the result of increased light scattering by additional matter ejected through the temporary (nonlinear) in-phase superposition of several NRP modes.

Appendix B.1: HD 58050 (HR 2817, OT Gem, TIC 14498757)

Božić et al. (1999) distinguished photometrically quiet and active phases with peak-to-peak ranges of up to 0.4 mag in V and

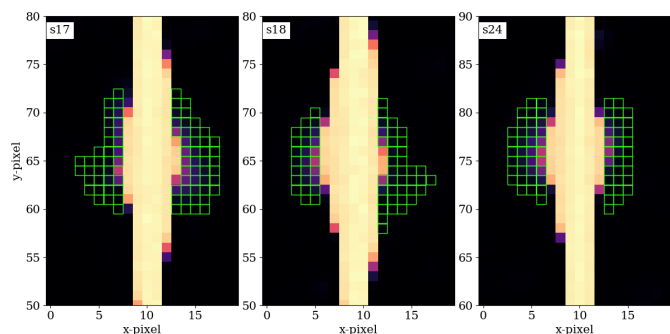


Fig. A.2: TESS “postage stamp” in the same style as Figure A.1 showing the aperture mask used for halo photometry, where saturated pixels are not included.

timescales up to hundreds of days. In observations obtained during the active phase they found cyclic variability with a repetition time of nearly 72 d and a peak-to-peak amplitude of ~ 0.15 mag. The authors attributed this variability to binarity but did not have corroborating spectral evidence. Because of the link to enhanced photometric activity, a relation to the beating of NRP modes is equally plausible and supported by the triangular shape of the light curve, characteristic of short-lived mass ejection events (Bernhard et al. 2018; Labadie-Bartz et al. 2018)

With a peak-to-peak range of ~ 0.06 mag, HR 2817 is relatively active in regards to its secular brightening and fading events compared to other Be stars observed by TESS, but much less variable than during the active state described by Božić et al. (1999, where the authors use a significantly longer time baseline). The TESS light curve (Fig. B.1) includes two rather strong local maxima during which the in-phase superposition of g_2 frequencies is particularly clearly visible.

Appendix B.2: HD 71042 (TIC 52929072)

From observations in 3 of 5 consecutive annual seasons, Labadie-Bartz et al. (2018) classified HD 71042 as Be star with outburst behavior and a full range of ~ 0.2 mag in V . Contrary to the majority of Be stars, the outburst activity mainly consisted of dimmings rather than brightenings, suggesting that the line of sight passes through the disk. There may be a 23.5 d period with very unusual light curve. Observed in two consecutive TESS sectors, the light curve in Fig. B.2 shows three time intervals when the mean magnitude dropped and subsequently ascended (the observations ended before a possible recovery after the third decline). In all three intervals, the temporary in-phase superposition of g_1 frequencies is prominent, and to a lesser extent those in g_2 . The short-term variability, too, is consistent with a near-equator-on perspective. However, there are no published spectra. The 23.5 d period may also be present in the TESS data, although the short observational baseline makes this uncertain.

Appendix B.3: HD 144555 (TIC 215511795)

In Fig. B.3, five humps in mean magnitude appear in the light curve of HD 144555. On the ascending branch of all of them, variations with frequencies from g_1 are temporarily co-phased. Around TJD = 1644 (TJD = BJD - 2457000), an additional phenomenon occurred in the form of a strong admixture of variability with g_2 frequencies. That multiple g_1 as well as g_2 frequencies are in phase both alone and together may be a coincidence.

But the probability of this happening in a single TESS sector of one month may be low. Therefore, this phase could also be an indication of strong nonlinearity as g_1 and g_2 are in a crudely harmonic relation. This phenomenon is seen in other Be stars observed by TESS. **The difference between the two strongest signals in g_1 is 0.24377 d^{-1} , consistent with the amplitude of g_1 being modulated with a period of ~ 4 days.**

Appendix B.4: HD 156172 (TIC 216875138)

The photometric variability in Fig B.4 belongs to the most unusual ones described to date for any suspected classical Be star. Firstly, the Lomb-Scargle amplitude spectrum of this late O-type star contains very little power below 4 d^{-1} , and frequency groups g_1 and g_2 are not discernable in a broad distribution of weak peaks. The strongest features appear at the unusually high frequencies of 6.9724 and 6.660 d^{-1} , respectively, and seem to be members of a small group. This has led to the classification of HD 156172 as a β Cep star by Pigulski & Pojmański (2008) who listed a single frequency of $6.97258(3) \text{ d}^{-1}$ and an amplitude of 12.4 mmag in V . There is a much lower-amplitude pair of signals at frequencies of 13.9468847 and 13.635789 d^{-1} . The higher frequency of these is consistent with being the first harmonic of the strongest signal at 6.9724 d^{-1} , and the lower-frequency signal is equal to the sum of the two frequencies near 7 d^{-1} . Secondly, the difference, 0.312 d^{-1} , between these two main frequencies appears as the beat frequency in the wavelet transform (Fig. B.4). Since the beat frequency also exists in the amplitude spectrum (as the peak with the fourth highest amplitude, but not necessarily Lomb-Scargle power), there seems to be a nonlinear mode interaction. Thirdly, the mean brightness of HD 156172 varies with the same beat period and a semi-amplitude of $0.1 - 0.2\%$. The amplitude is tiny but clearly detectable by plain visual inspection, and there is a well isolated peak in the unfiltered Lomb-Scargle spectrum at 0.312 d^{-1} . The maxima coincide with times of constructive interference of the said two frequencies (blobs in the wavelet transform).

If these frequencies correspond to p -modes, HD 156172 might be one of the first Be stars in which indications of mass-loss due to p -mode pulsations is found (see also Nazé et al. 2020). Frequencies in the nominal p -mode domain are not uncommon in Be stars (Labadie-Bartz & Carciofi 2020; Balona & Ozuyar 2020). However, in HD 156172, only the absence of the mostly much stronger g_1 and g_2 variabilities permitted the minute variation in mean brightness to be detected. Generally, caution should be exercised in uncritically adopting a p -mode identification merely on the basis of the observed frequencies because rapid rotation may greatly modify the frequencies in the inertial frame. However, the absence of significant g_1 and g_2 frequencies as possible parent frequencies may make a p -mode identification safer.

Inspired by the above peculiarities, an echelle spectrum was obtained on July 01 2020 with the NRES instrument attached to the 1-m telescope at South African Astronomical Observatory operated by LCOGT. The $H\alpha$ and $H\beta$ line are shown in Figure B.5. This spectrum is entirely consistent with that of a classical Be star, and seemingly inconsistent with other types of objects that may show hydrogen emission (*i.e.* interacting binaries, rapidly rotating OB stars with strong magnetic fields, supergiants, or Herbig Ae/Be. Other absorption lines are consistent with the spectral classification of a rapidly rotating late O or early B star. A more detailed investigation of this system is beyond the scope of this work, but is certainly warranted.

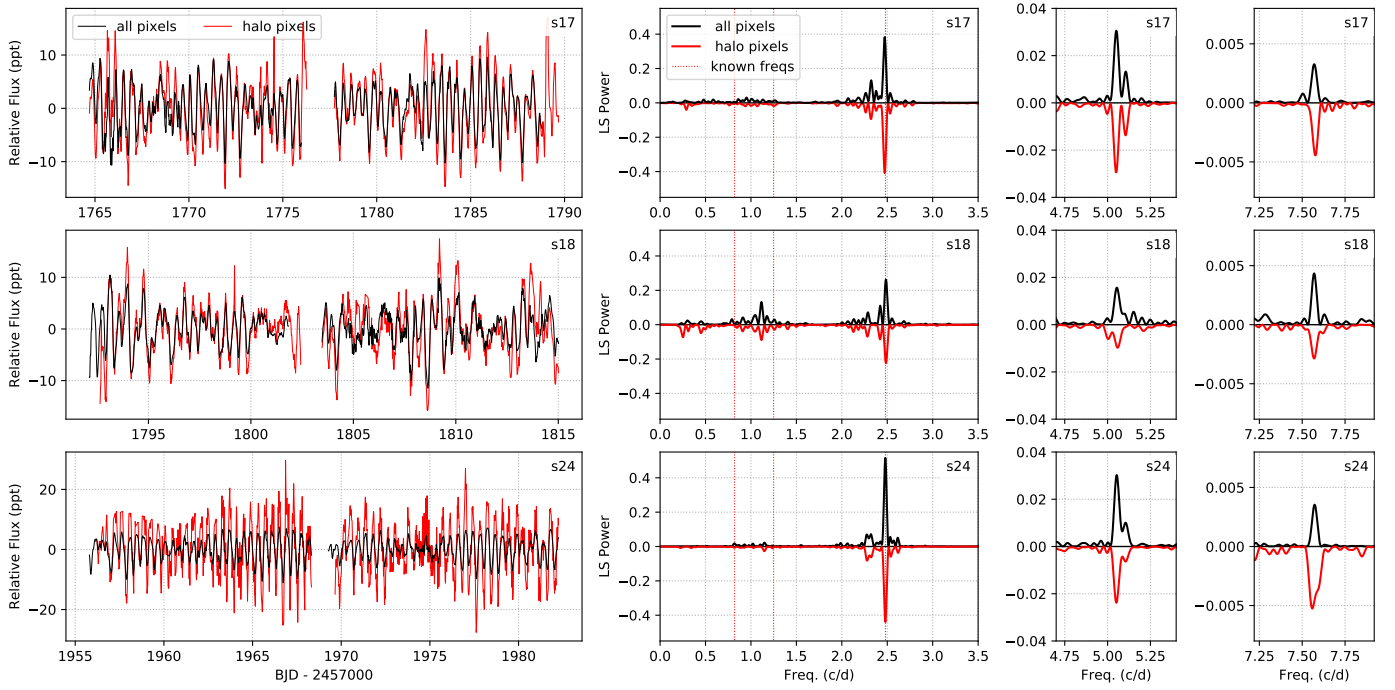


Fig. A.3: *Left*: Comparison of the light curve extracted using all charge-containing pixels (black) and using only non-saturated halo pixels (red) for sectors 17, 18, and 24 after detrending. *Right*: Lomb-Scargle periodogram for the light curve extracted using all charge-containing pixels (black) and using only non-saturated halo pixels (inverted, red) showing the main features. Owing to the different extraction apertures, there are slight differences in the systematic trends in the two versions of the light curves, requiring removal of data at slightly different times near the beginning and end of each half of each observing sector.

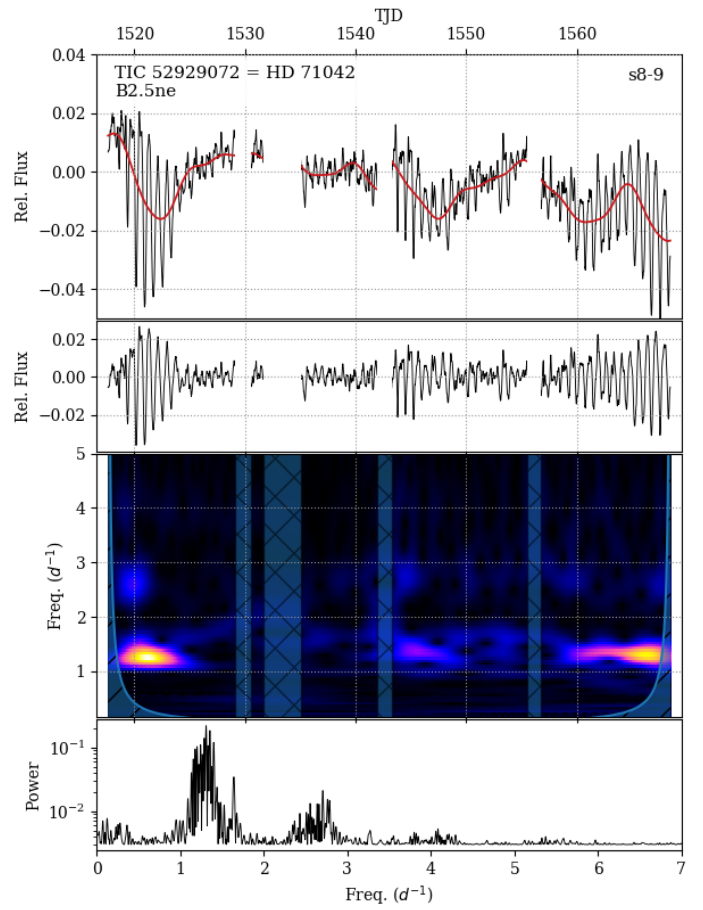
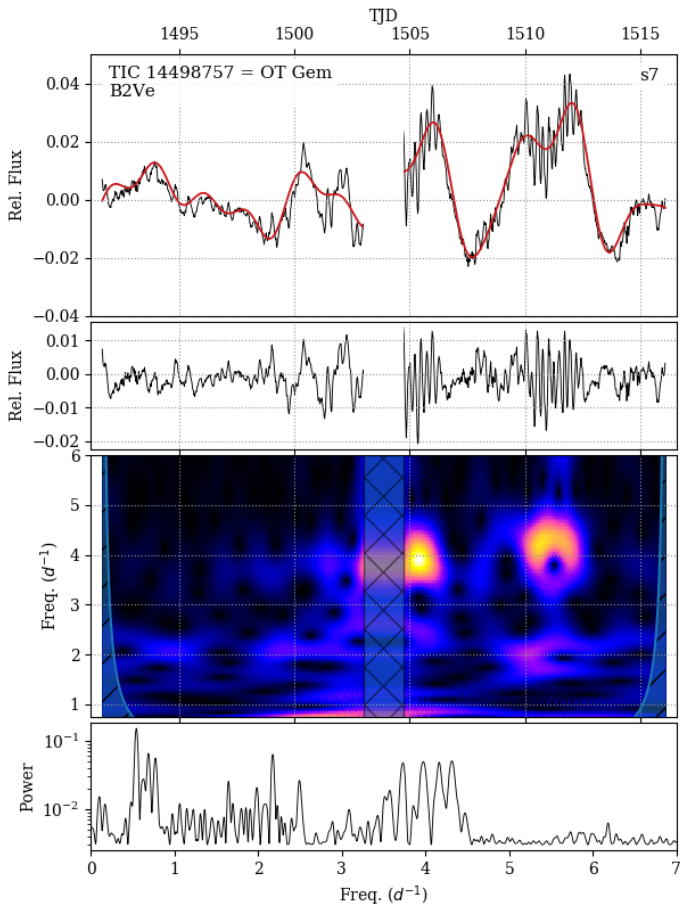


Fig. B.1: *Top*: Raw TESS light curve (after removing trends common to other pixels in the vicinity of the target) in black, with the red curve showing the low frequency component. *Second*: TESS light curve after removing the low frequency component. *Third*: Wavelet analysis showing the variability of the main frequency groups. *Fourth*: Lomb-Scargle periodogram, computed after removing the low frequency component.

Fig. B.2: Same as Figure B.1, but for TIC 52929072.

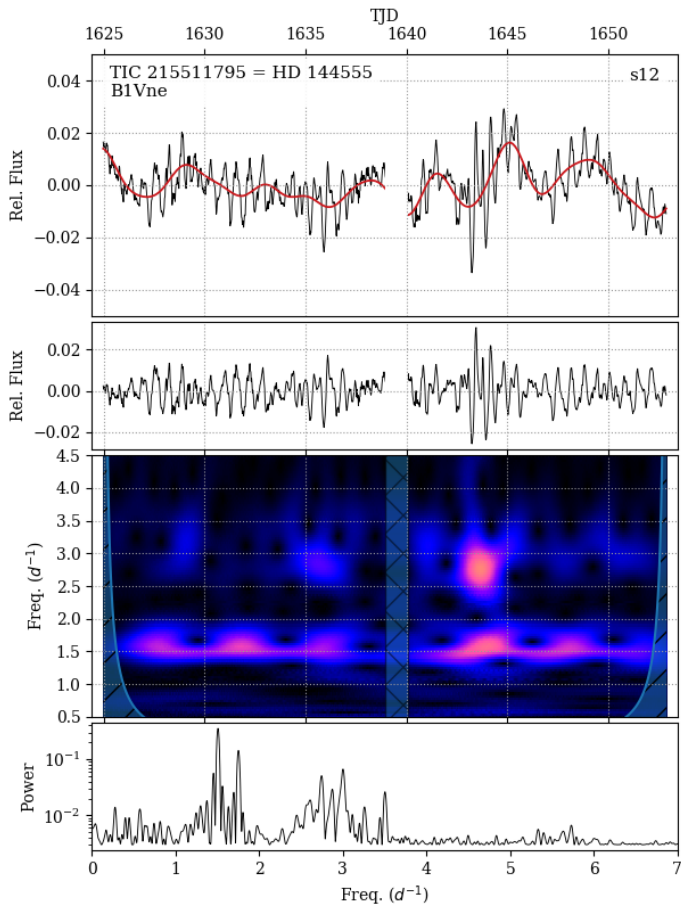


Fig. B.3: Same as Figure B.1, but for TIC 215511795

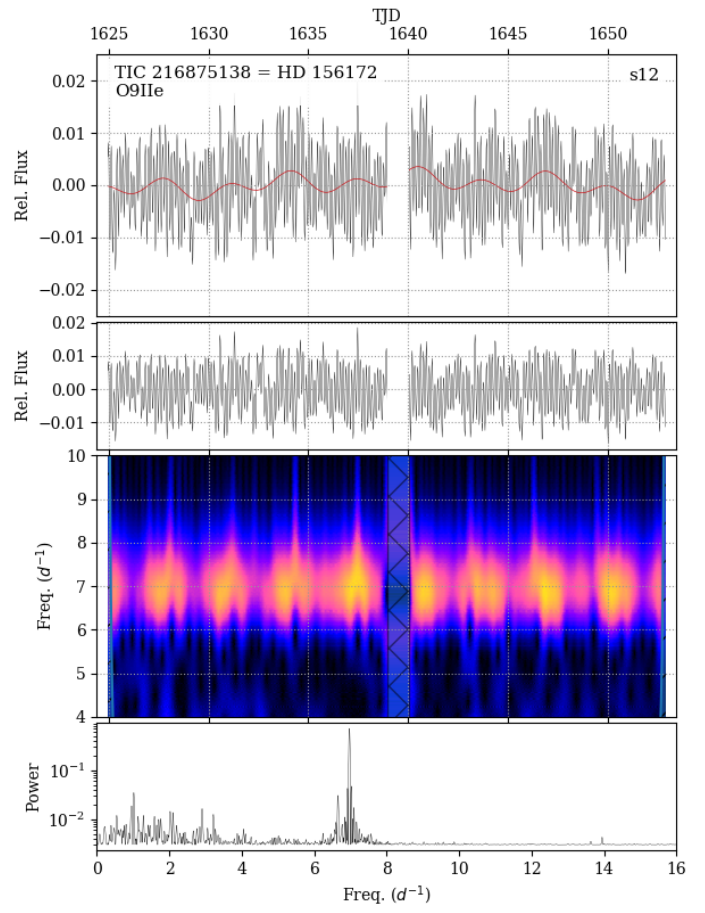


Fig. B.4: Same as Figure B.1, but for TIC 216875138.

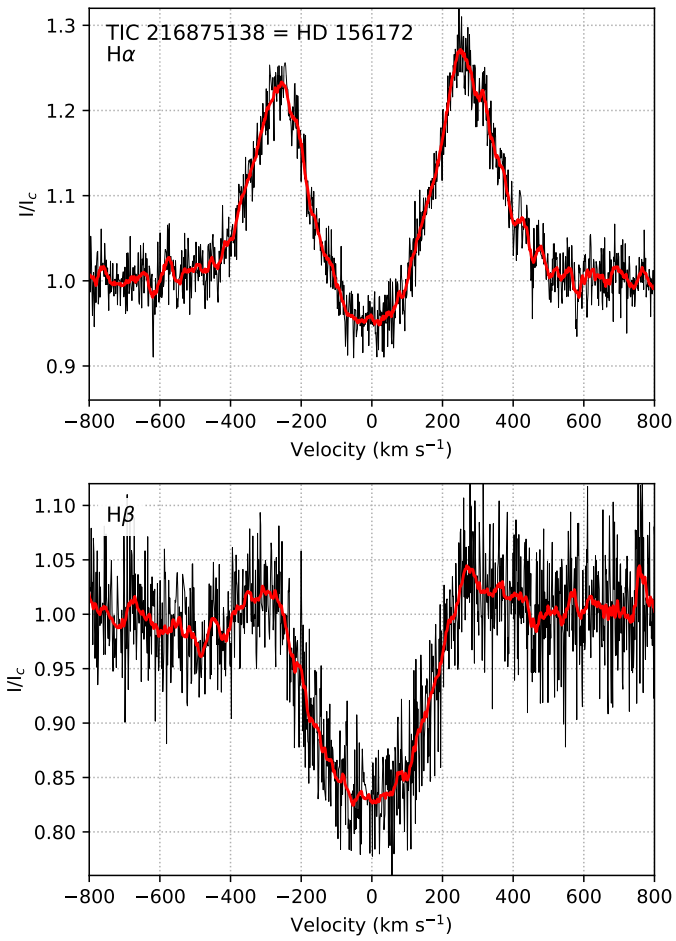


Fig. B.5: The H α and H β lines for HD 156172 (TIC 216875138) from a single NRES spectrum.

Appendix C: Full frequency table for combined light curve

All frequencies found through iterative pre-whitening of the combined Sectors 17 + 18 + 24 data are given in Table C.1, up to a false alarm probability of $\log_{10}(\text{FAP}) = -4$.

Table C.1: Frequencies detected through iterative pre-whitening for the full TESS light curve, according to the frequency groups (when applicable) and ordered by the semi-amplitude.

Group	Freq. (d^{-1})	Amp. (ppt)	Phase	SNR	$\log_{10}(\text{FAP})$
g1	1.1346(6)	0.71	0.245	572.6	-21.8
g1	1.0206(7)	0.62	0.133	709.6	-25.5
g1	0.8099(8)	0.59	-0.350	373.0	-16.1
g1	1.111(1)	0.46	-0.126	913.0	-29.1
g1	0.916(1)	0.40	-0.443	476.3	-19.2
g1	1.002(1)	0.34	0.324	125.0	-8.9
g1	0.839(1)	0.31	-0.491	280.4	-14.5
g1	0.526(1)	0.28	-0.470	138.8	-9.6
g1	1.412(1)	0.28	0.045	153.6	-10.0
g1	0.866(1)	0.28	-0.059	109.8	-8.0
g1	1.165(2)	0.24	0.441	112.6	-8.2
g1	1.332(2)	0.23	-0.411	44.9	-5.3
g1	0.732(2)	0.22	0.393	73.1	-6.6
g1	1.246(2)	0.19	0.254	310.3	-14.8
g1	1.059(2)	0.19	-0.170	242.4	-14.0
g1	1.449(2)	0.18	-0.281	53.4	-5.8
g1	0.789(2)	0.17	-0.113	110.9	-8.8
g1	1.094(3)	0.15	0.002	333.8	-15.6
g1	1.118(3)	0.14	0.229	187.3	-11.5
g1	1.299(3)	0.13	0.108	27.9	-4.8
g1	0.923(4)	0.12	0.124	67.0	-6.8
g1	0.644(4)	0.12	-0.330	50.1	-5.6
g1	1.206(4)	0.11	0.020	286.7	-14.7
g1	0.893(5)	0.09	0.106	42.6	-5.0
g1	0.956(5)	0.09	-0.456	296.7	-15.2
g1	0.958(5)	0.09	0.406	137.5	-9.8
g1	1.032(6)	0.08	-0.237	42.5	-5.1
g1	1.090(6)	0.08	0.150	168.5	-11.2
g1	0.683(6)	0.08	0.217	43.7	-5.2
g1	1.207(6)	0.07	0.355	127.6	-9.0
g1	1.230(8)	0.06	0.473	73.1	-6.6
g1	0.958(8)	0.06	0.252	169.1	-11.0
g1	1.093(8)	0.06	-0.365	43.1	-4.9
g1	1.090(9)	0.05	-0.052	60.9	-6.2
g1	1.244(9)	0.05	-0.478	91.0	-7.3
g1	1.244(9)	0.05	-0.493	55.8	-5.9
g1	0.955(9)	0.05	-0.036	195.4	-12.1
g1	1.242(9)	0.05	-0.189	126.1	-8.9
g1	1.09(1)	0.04	-0.342	116.2	-8.6
g1	0.58(1)	0.04	-0.200	33.8	-4.5
g1	1.20(1)	0.04	-0.132	69.4	-6.7
g1	1.20(1)	0.04	0.212	110.3	-8.2
g1	1.23(1)	0.03	-0.297	41.9	-4.8
g1	1.23(1)	0.03	-0.416	24.8	-4.2
g1	0.95(1)	0.03	0.485	42.1	-5.0
g1	1.20(1)	0.03	-0.201	43.2	-5.3
g1	1.21(1)	0.03	-0.321	88.8	-7.0
g1	1.21(1)	0.03	0.236	52.8	-6.1
g1	1.11(1)	0.03	-0.018	50.2	-5.7
g1	1.05(1)	0.03	-0.149	31.5	-4.5

g1	1.11(1)	0.03	-0.378	31.3	-4.5
g1	0.95(2)	0.02	0.375	46.4	-5.4
g1	1.06(2)	0.02	0.278	23.3	-3.9
g1	1.06(2)	0.02	0.289	45.8	-5.3
g1	0.95(2)	0.02	0.193	25.2	-4.4
g1	1.11(2)	0.02	0.190	44.9	-5.2
g1	0.95(2)	0.02	-0.483	75.0	-6.9
g1	1.20(2)	0.02	-0.375	27.1	-4.7
g1	0.95(2)	0.02	0.156	56.2	-6.0
g1	1.21(2)	0.02	0.437	73.6	-6.7
g1	1.20(2)	0.02	-0.320	38.6	-4.7
g1	1.06(2)	0.02	-0.464	69.6	-7.1
g1	0.95(2)	0.02	0.014	65.8	-6.6
g1	1.06(2)	0.02	-0.108	43.5	-5.0
g1	0.95(4)	0.01	-0.033	81.4	-7.0
g1	1.06(4)	0.01	-0.075	59.2	-6.0
g1	1.24(4)	0.01	-0.426	25.5	-4.4
g1	1.20(4)	0.01	-0.347	24.8	-4.1
g2	2.4796(1)	3.67	-0.218	13244.3	-256.9
g2	2.3244(3)	1.30	-0.400	2356.9	-68.0
g2	2.2663(4)	1.01	0.442	1289.5	-40.7
g2	2.4161(5)	0.95	-0.483	487.1	-19.0
g2	2.2902(7)	0.69	0.255	476.6	-19.9
g2	2.5421(8)	0.56	-0.085	348.7	-16.1
g2	2.6331(8)	0.55	0.034	297.8	-14.8
g2	2.1187(9)	0.53	0.041	390.1	-16.1
g2	1.9452(9)	0.52	-0.142	297.6	-14.2
g2	2.3607(9)	0.50	-0.257	577.8	-21.6
g2	2.581(1)	0.42	0.045	182.3	-11.2
g2	1.968(1)	0.37	-0.046	94.1	-7.1
g2	2.057(1)	0.36	-0.221	148.6	-9.8
g2	2.211(1)	0.36	-0.157	224.5	-13.5
g2	2.605(1)	0.36	-0.281	69.4	-6.5
g2	2.380(1)	0.33	0.475	315.5	-14.9
g2	2.509(1)	0.33	0.363	346.6	-15.0
g2	2.182(1)	0.33	0.177	739.5	-25.8
g2	2.342(1)	0.32	-0.125	367.1	-15.7
g2	1.865(1)	0.29	0.163	97.5	-7.9
g2	2.260(1)	0.25	-0.235	97.4	-7.1
g2	2.457(2)	0.23	0.500	824.4	-28.0
g2	1.898(2)	0.21	0.380	42.5	-5.2
g2	1.764(2)	0.20	0.076	24.0	-4.1
g2	2.151(2)	0.20	-0.425	42.6	-4.8
g2	1.982(2)	0.17	0.483	30.1	-4.9
g2	2.684(3)	0.16	-0.458	31.3	-4.5
g2	2.238(3)	0.16	0.477	24.5	-4.1
g2	2.863(3)	0.16	0.025	64.2	-6.5
g2	2.698(3)	0.16	-0.321	98.6	-7.3
g2	2.462(3)	0.15	-0.414	534.0	-21.5
g2	2.017(3)	0.15	0.476	106.6	-7.8
g2	2.089(3)	0.14	0.077	29.7	-4.4
g2	2.777(3)	0.14	0.468	36.8	-4.7
g2	2.340(3)	0.13	0.379	83.4	-7.0
g2	2.699(3)	0.13	-0.288	29.3	-4.7
g2	2.506(4)	0.11	-0.051	111.0	-7.9
g2	2.371(4)	0.11	0.116	86.1	-7.8
g2	2.178(5)	0.09	-0.451	25.8	-4.4
g2	2.417(5)	0.09	-0.102	47.1	-5.4
g2	2.304(6)	0.08	0.192	38.3	-4.7
g2	2.459(6)	0.08	0.130	363.6	-15.8
g2	2.363(6)	0.07	0.287	24.3	-4.1
g2	2.459(8)	0.06	-0.066	204.5	-12.7
g2	2.175(8)	0.06	0.038	57.3	-5.9
g2	2.460(9)	0.05	-0.263	71.2	-7.4

g2	2.46(1)	0.04	-0.230	120.2	-8.7
g2	2.17(1)	0.04	0.362	71.1	-6.8
g2	2.46(1)	0.04	-0.119	102.9	-7.6
g2	2.45(1)	0.04	-0.095	139.9	-9.7
g2	2.45(1)	0.03	-0.482	45.4	-5.3
g2	2.51(1)	0.03	-0.371	26.6	-4.6
g2	2.45(2)	0.02	-0.027	24.3	-4.1
g2	2.45(2)	0.02	0.013	40.7	-4.8
g3	5.0559(5)	0.90	-0.382	934.0	-28.9
g3	5.091(1)	0.45	0.319	269.8	-14.1
g4	7.571(1)	0.30	-0.442	103.4	-8.1
	1.542(1)	0.42	0.028	117.6	-8.5
	3.721(1)	0.26	0.438	24.3	-4.0
	4.044(2)	0.24	0.197	40.0	-4.8
	4.701(2)	0.20	-0.344	58.4	-5.9
	0.453(2)	0.20	-0.147	79.9	-6.9
	0.281(2)	0.18	0.398	196.3	-12.1
	0.427(2)	0.17	0.429	123.0	-8.6
	1.688(3)	0.13	-0.211	39.7	-4.7
	0.309(3)	0.13	0.126	119.7	-8.6
	0.426(4)	0.11	-0.184	33.9	-4.6
	0.364(4)	0.11	0.401	40.7	-4.8
	0.481(5)	0.09	-0.292	126.3	-9.2
	0.235(6)	0.07	-0.031	45.0	-5.2
	0.480(9)	0.05	-0.258	44.8	-5.5
	0.48(1)	0.04	-0.064	24.9	-4.2
	0.28(1)	0.03	-0.259	42.8	-4.9
	0.28(1)	0.03	-0.045	57.7	-5.9
	0.26(1)	0.03	-0.264	40.5	-4.9
	0.31(2)	0.02	0.168	24.7	-4.1
	0.26(4)	0.01	0.240	23.9	-4.1
	0.28(4)	0.01	-0.077	24.1	-4.1

References

- Aerts, C., Mathis, S., & Rogers, T. M. 2019, *ARA&A*, 57, 35
- Astropy Collaboration, Price-Whelan, A. M., Sipőcz, B. M., et al. 2018, *AJ*, 156, 123
- Astropy Collaboration, Robitaille, T. P., Tollerud, E. J., et al. 2013, *A&A*, 558, A33
- Baade, D., Pigulski, A., Rivinius, T., et al. 2018a, *A&A*, 610, A70
- Baade, D., Pigulski, A., Rivinius, T., et al. 2018b, *A&A*, 620, A145
- Baade, D. & Rivinius, T. 2020, in *Proceedings of the conference Stars and their Variability Observed from Space*, ed. C. Neiner, W. W. Weiss, D. Baade, R. E. Griffin, C. C. Lovekin, & A. F. J. Moffat, 35–38
- Baade, D., Rivinius, T., Pigulski, A., et al. 2017, in *Second BRITe-Constellation Science Conf.: Small satellites – big science*, *Proc. Polish Astron. Soc.*, Vol. 5, eds. K. Zwintz and E. Poretti, 196–205
- Baade, D., Rivinius, T., Pigulski, A., et al. 2016, *A&A*, 588, A56
- Baade, D., Rivinius, T., Pigulski, A., et al. 2018c, in *3rd BRITe Science Conference*, ed. G. A. Wade, D. Baade, J. A. Guzik, & R. Smolec, Vol. 8, 69–76
- Balona, L. A. & Ozuyar, D. 2020, *MNRAS*, 493, 2528
- Bernhard, K., Otero, S., Hümmerich, S., et al. 2018, *MNRAS*, 479, 2909
- Bjorkman, K. S., Miroshnichenko, A. S., McDavid, D., & Pogrosheva, T. M. 2002, *ApJ*, 573, 812
- Borre, C. C., Baade, D., Pigulski, A., et al. 2020, *A&A*, 635, A140
- Božić, H., Ruždjak, D., & Sudar, D. 1999, *A&A*, 350, 566
- Bowman, D. M., Aerts, C., Johnston, C., et al. 2019, *A&A*, 621, A135
- Bowman, D. M., Burssens, S., Simón-Díaz, S., et al. 2020, *arXiv e-prints*, arXiv:2006.03012
- Brasseur, C. E., Phillip, C., Fleming, S. W., Mullally, S. E., & White, R. L. 2019, *Astrotut: Tools for creating cutouts of TESS images*
- Carciofi, A. C. 2011, in *IAU Symposium*, Vol. 272, *Active OB Stars: Structure, Evolution, Mass Loss, and Critical Limits*, ed. C. Neiner, G. Wade, G. Meynet, & G. Peters, 325–336
- Doazan, V., Franco, M., Rusconi, L., Sedmak, G., & Stalio, R. 1983, *A&A*, 128, 171
- Edelmann, P. V. F., Ratnasingham, R. P., Pedersen, M. G., et al. 2019, *ApJ*, 876, 4
- Floquet, M., Hubert, A.-M., Huat, A.-L., et al. 2009, *A&A*, 506, 103
- Georgy, C., Ekström, S., Granada, A., et al. 2013, *A&A*, 553, A24
- Ghoreyshi, M. R., Carciofi, A. C., Rímulo, L. R., et al. 2018, *MNRAS*, 479, 2214
- Grnhut, J. H., Wade, G. A., Neiner, C., et al. 2017, *MNRAS*, 465, 2432
- Hamaguchi, K., Oskinova, L., Russell, C. M. P., et al. 2016, *ApJ*, 832, 140
- Harmanec, P. 2002, in *Astron. Soc. Pacific Conf. Ser.*, Vol. 279, *Exotic Stars as Challenges to Evolution*, ed. C. A. Tout & W. van Hamme, 221
- Hartman, J. 2012, *VARTOOLS: Light Curve Analysis Program, Astrophysics Source Code Library*
- Haubois, X., Carciofi, A. C., Rivinius, T., Okazaki, A. T., & Bjorkman, J. E. 2012, *ApJ*, 756, 156
- Haubois, X., Mota, B. C., Carciofi, A. C., et al. 2014, *ApJ*, 785, 12
- Henry, G. W. & Smith, M. A. 2012, *ApJ*, 760, 10
- Horaguchi, T., Kogure, T., Hirata, R., et al. 1994, *PASJ*, 46, 9
- Horst, L., Edelmann, P. V. F., Andrassy, R., et al. 2020, *arXiv e-prints*, arXiv:2006.03011
- Huat, A.-L., Hubert, A.-M., Baudin, F., et al. 2009, *A&A*, 506, 95
- Kambe, E., Hirata, R., Ando, H., et al. 1997, *ApJ*, 481, 406
- Kee, N. D., Owocki, S., & Kuiper, R. 2018, *MNRAS*, 474, 847
- Klement, R., Carciofi, A. C., Rivinius, T., et al. 2019, *ApJ*, 885, 147
- Krtićka, J., Owocki, S. P., & Meynet, G. 2011, *A&A*, 527, A84
- Kurtz, D. W., Shibahashi, H., Murphy, S. J., Bedding, T. R., & Bowman, D. M. 2015, *MNRAS*, 450, 3015
- Kurtz, M. J., Eichhorn, G., Accomazzi, A., et al. 2000, *A&AS*, 143, 41
- Labadie-Bartz, J. & Carciofi, A. C. 2020, in *Proceedings of the conference Stars and their Variability Observed from Space*, ed. C. Neiner, W. W. Weiss, D. Baade, R. E. Griffin, C. C. Lovekin, & A. F. J. Moffat, 137–145
- Labadie-Bartz, J., Chojnowski, S. D., Whelan, D. G., et al. 2018, *AJ*, 155, 53
- Labadie-Bartz, J., Pepper, J., McSwain, M. V., et al. 2017, *AJ*, 153, 252
- Langer, N., Baade, D., Bodensteiner, J., et al. 2020, *A&A*, 633, A40
- Lecoanet, D., Cantiello, M., Quataert, E., et al. 2019, *ApJ*, 886, L15
- Lee, U., Osaki, Y., & Saio, H. 1991, *MNRAS*, 250, 432
- Lee, U. & Saio, H. 2020, *arXiv e-prints*, arXiv:2005.00440
- Lenz, P. & Breger, M. 2005, *Communications in Asteroseismology*, 146, 53
- Maintz, M., Rivinius, T., Štefl, S., et al. 2003, *A&A*, 411, 181
- McNamara, B. J., Jackiewicz, J., & McKeever, J. 2012, *AJ*, 143, 101
- Montgomery, M. H. & O'Donoghue, D. 1999, *Delta Scuti Star Newsletter*, 13, 28
- Moździerski, D., Pigulski, A., Kołaczowski, Z., et al. 2019, *A&A*, 632, A95
- Nazé, Y., Pigulski, A., Rauw, G., & Smith, M. A. 2020, *MNRAS*, 494, 958
- Nazé, Y., Rauw, G., & Smith, M. 2019, *A&A*, 632, A23
- Nazé, Y., Motch, C., Rauw, G., et al. 2020, *MNRAS*, 493, 2511
- Neiner, C., de Batz, B., Cochard, F., et al. 2011, *AJ*, 142, 149
- Neiner, C., Floquet, M., Samadi, R., et al. 2012, *A&A*, 546, A47
- Neiner, C., Lee, U., Mathis, S., et al. 2020, *arXiv e-prints*, arXiv:2007.08977
- Nemravová, J., Harmanec, P., Koubský, P., et al. 2012, *A&A*, 537, A59
- Ninkov, Z., Yang, S., & Walker, G. 1983, *Hvar Observatory Bulletin*, 7, 167
- Okazaki, A. T., Bate, M. R., Ogilvie, G. I., & Pringle, J. E. 2002, *MNRAS*, 337, 967
- Owocki, S. 2006, in *Astronomical Society of the Pacific Conference Series*, Vol. 355, *Stars with the B[e] Phenomenon*, ed. M. Kraus & A. S. Miroshnichenko, 219
- Pápics, P. I., Tkachenko, A., Van Reeth, T., et al. 2017, *A&A*, 598, A74
- Peters, G. J. & Gies, D. R. 2005, in *Astronomical Society of the Pacific Conference Series*, Vol. 337, *The Nature and Evolution of Disks Around Hot Stars*, ed. R. Ignace & K. G. Gayley, 294
- Pigulski, A. & Pojmański, G. 2008, *A&A*, 477, 917
- Pollmann, E. 2009, *Be Star Newsletter*, 39, 32
- Postnov, K., Oskinova, L., & Torrejón, J. M. 2017, *MNRAS*, 465, L119
- Press, W. H., Teukolsky, S. A., Vetterling, W. T., & Flannery, B. P. 1992, *Numerical recipes in C. The art of scientific computing*
- Ratnasingham, R. P., Edelmann, P. V. F., & Rogers, T. M. 2020, *MNRAS*
- Ricker, G. R., Winn, J. N., Vanderspek, R., et al. 2015, *Journal of Astronomical Telescopes, Instruments, and Systems*, 1, 014003
- Rímulo, L. R., Carciofi, A. C., Vieira, R. G., et al. 2018, *MNRAS*, 476, 3555
- Rivinius, T., Baade, D., & Carciofi, A. C. 2016, *A&A*, 593, A106
- Rivinius, T., Baade, D., & Štefl, S. 2003, *A&A*, 411, 229
- Rivinius, T., Carciofi, A. C., & Martayan, C. 2013, *A&A Rev.*, 21, 69
- Rogers, T. M., Lin, D. N. C., McElwaine, J. N., & Lau, H. H. B. 2013, *ApJ*, 772, 21
- Saio, H., Bedding, T. R., Kurtz, D. W., et al. 2018a, *MNRAS*, 477, 2183
- Saio, H., Cameron, C., Kuschnig, R., et al. 2007, *ApJ*, 654, 544
- Saio, H., Kurtz, D. W., Murphy, S. J., Antoci, V. L., & Lee, U. 2018b, *MNRAS*, 474, 2774
- Secchi, A. 1866, *Astronomische Nachrichten*, 68, 63
- Semaan, T., Hubert, A. M., Zorec, J., et al. 2018, *A&A*, 613, A70
- Sikora, J., Wade, G. A., Power, J., & Neiner, C. 2019, *MNRAS*, 483, 2300
- Smith, M. A. 1985, *ApJ*, 297, 206
- Smith, M. A., Henry, G. W., & Vishniac, E. 2006, *ApJ*, 647, 1375
- Smith, M. A., Lopes de Oliveira, R., & Motch, C. 2016, *Advances in Space Research*, 58, 782

- Stee, P., Delaa, O., Monnier, J. D., et al. 2012, *A&A*, 545, A59
- Tsujimoto, M., Morihana, K., Hayashi, T., & Kitaguchi, T. 2018, *PASJ*, 70, 109
- ud-Doula, A., Owocki, S. P., & Kee, N. D. 2018, *MNRAS*, 478, 3049
- Štefl, S., Baade, D., Rivinius, T., et al. 1998, in *Astronomical Society of the Pacific Conference Series*, Vol. 135, *A Half Century of Stellar Pulsation Interpretation*, ed. P. A. Bradley & J. A. Guzik, 348
- Van Reeth, T., Tkachenko, A., & Aerts, C. 2016, *A&A*, 593, A120
- VanderPlas, J., Connolly, A. J., Ivezić, Z., & Gray, A. 2012, in *Proceedings of Conference on Intelligent Data Understanding (CIDU)*, 47–54
- VanderPlas, J. T. & Ivezić, Ž. 2015, *ApJ*, 812, 18
- Vogt, S. S. & Penrod, G. D. 1983, *ApJ*, 275, 661
- Wade, G. A., Petit, V., Grunhut, J. H., Neiner, C., & MiMeS Collaboration. 2016, in *Astronomical Society of the Pacific Conference Series*, Vol. 506, *Bright Emissaries: Be Stars as Messengers of Star-Disk Physics*, ed. T. A. A. Sigut & C. E. Jones, 207
- Walker, G. A. H., Kuschnig, R., Matthews, J. M., et al. 2005, *ApJ*, 635, L77
- Wang, L., Gies, D. R., & Peters, G. J. 2018, *ApJ*, 853, 156
- Wenger, M., Ochsenbein, F., Egret, D., et al. 2000, *A&AS*, 143, 9
- Yang, S., Ninkov, Z., & Walker, G. A. H. 1988, *PASP*, 100, 233
- Zechmeister, M. & Kürster, M. 2009, *A&A*, 496, 577